

How do we imagine the cultural buildings of the 21st century?

How does a cultural festival influence the life of a city after it had been finished?

How does a place become the bearer of identity? Can we influence this process by design?



DESIGN PLOTS AND PROGRAMS:

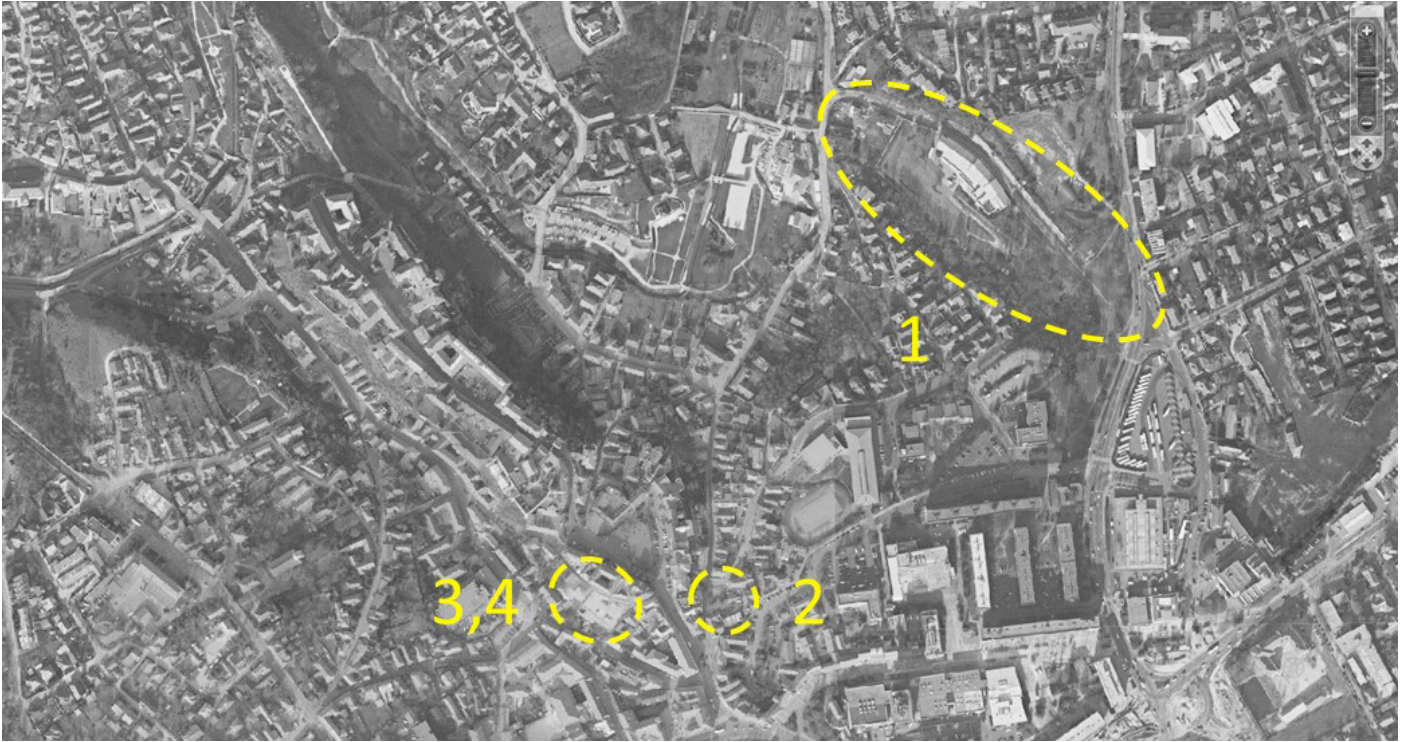
City of Veszprém is becoming the Cultural Capital of Europe in 2023. This gives an opportunity, to research the vast local values of the past, and to enumerate possibilities for the future. Most of the developments are related to the festival, but the role they are going to play after it is even more important: they will define the atmosphere the cityscape, thus their sustainability is a key factor. The volume of these projects can enhance the existing identity of the city, or even redefine it. Public buildings play a main role in this process, thanks to their representativeness and cultural influence. We chose public buildings from the programme of ECC (EKF), that have sites with great urban importance, and functions related to the most influential cultural communities of the city.

1. „Cloisters and Gardens” Visitor Centre, ECC info hub. Starting point of the picturesque C&G tour route following the Séd stream. Its main function is to exhibit the most important features of the route, and act as a starting point for festival visitors. Finding the best plot of the function in the area of **1** is also part of the task.
2. Auer Music Centre . Lipót Auer was music theorist and violin virtuoso from Veszprém. His birth house is to be converted to a museum with a connecting concert hall.
3. Dance Centre. Many local dance ensembles are working in the city without having a designated building. The new project aims to fill this gap, with the additional benefit of possible cooperations between the different groups.

4. Kabóca Puppet theatre. The puppet performer group has been working in the city since 2001. The design task is to provide a new building for them using one of the empty downtown plots.

Alternative social innovative programs:

5. Primary Health Care Facility



FORRÁSOK:

<http://veszprembalaton2023.hu/>
<http://www.veszpremvolgy.hu/>
https://en.wikipedia.org/wiki/Leopold_Auer
<http://auerfesztival.hu/2019/index.php/en>
<https://www.kabocababszinhaz.hu/en>
<http://epiteszforum.hu/csakis-felfele-fejlesztések-indulnak-a-vezspremi-varban>

lectures, site visits:

2020.02.13. - course opening lecture

2020.02.19. - site visit - András Kavinszky (puppet theatre leader ,artist)

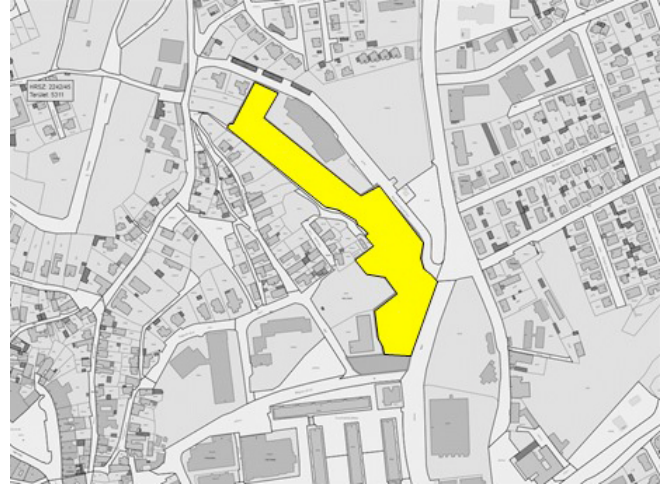
STUDIO CONSULTANTS

Balázs Mihály DLA
Karácsony Tamás DLA
Klobusovszki Péter DLA
Schrammel Zoltán DLA (ENGLISH)
Bartha András Márk (ENGLISH)

Zsófia Csomay DLA (guest lecturer)

She is the professor of Moholy-Nagy Arts University (MOME), a local of Veszprém, with many realised design projects in the city. The design students of MOME are also working in the city during the semester, we will arrange collective presentations with some representatives.

DESIGN TASK OPTIONS:

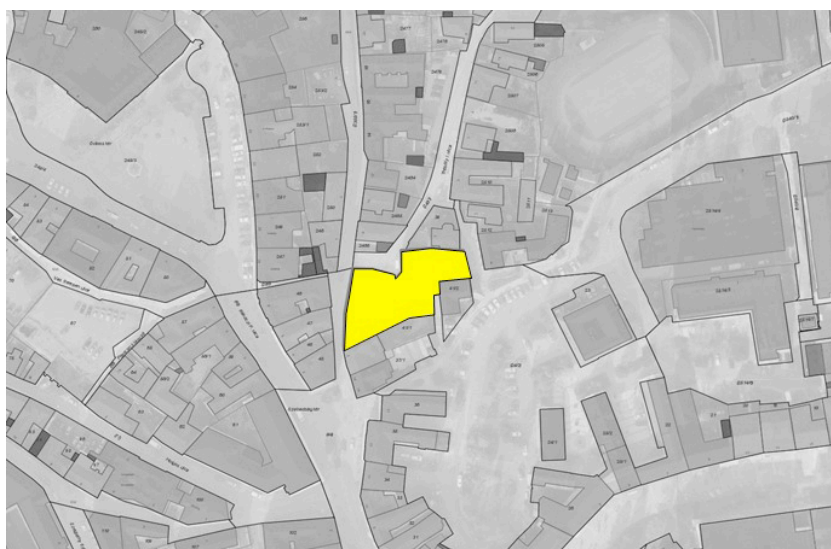


1. „CLOISTERS AND GARDENS” VISITOR CENTRE, ECC INFO HUB

Starting point of the picturesque C&G tour route following the Séd stream. Its main function is to exhibit the most important features of the route. The building should also act as a symbolic entrance, and a meeting point to the festival. Finding the best plot of the function in the area is also part of the task.

Entrance hall	150m ²
Information desk for 4 ps. staff. Providing up-to-date (printed, electronic) information to the visitors	
Ticket office for all the cultural venues of the city. 12 self-service ticket print terminals, lounge, sitting area	
Giftshop	40m ²
Selling souvenirs related to Veszprém	
Café	
Consuming space with connection to open air areas	30m ²
Café service areas	12m ²
Exhibition areas	300m ²
Space(s) for C&G exhibition, and temporary ECC installations	
Community and presentation room	50m ²
seating for 50 ppl	
Covered open-air areas	50m ²
Connected to entrance hall, starting point for tours, should fit 50 people	
Volunteers' room	50m ²
Service and recruitment of ECC volunteers with restrooms, changing rooms, showers, and toilets	
Service rooms	30m ²
Male, female, disabled, kids toilets, mother and baby room	

Car and bus access is not part of design, but bicycle storage, and optional roller and bicycle rental is providable. Energy consumption of the building should be provided with renewable sources.



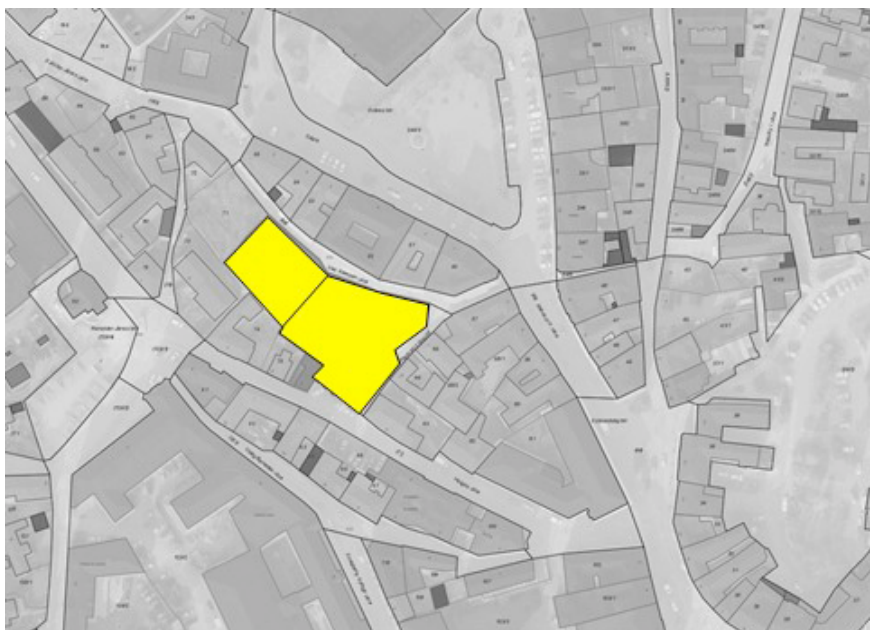
2. Auer Music Centre .

Lipót Auer was music theorist and violin virtuoso from Veszprém. The task is to commemorate his legacy, and provide a new venue for the city. His birth house has been converted to a museum, with a connecting concert hall.

The development should provide a interactive and fun way to present the key ideas behind Auer's life and theories, and give place for outdoor and indoor concerts as well. It should also house a small temporary exhibition and community events.

Entrance hall	150m ²
Reception, porta, cloakroom, 2 ppl. staff. Info materials, ticket counter.	
Meeting place, and receptacle for groups, optionally usable for small concerts	
Café with services, outdoor connection, seating area	
Multipurpose interactive exhibition rooms	50m ²
Showing the heritage of Auer Lipót both in an indirect, contemporary way: both physical and spiritual sense.	
One or more interconnectable rooms with connection to the entrance hall.	
Auditorium.	100m ²
For 60-80 people concerts, movies, music pedagogical seminars, exhibitions	
Rehearsal rooms (4x15m ² +1x25m ²)	75m ²
5 rooms 2-4 person each. Small chamber orchestras, individual performers, music pedagogy classes	
Classrooms (4x15m ²)	60m ²
4 rooms for individual teaching and practice	
Outdoor courtyard for concerts	appr. 150m ²
Suitable for 60-80 ppl., open-air concerts protected from rain	
Office	15m ²
Administrative space for 2 ppl., kitchenette	
Maintenance room	15m ²
For furniture and building parts fixing	
Service rooms	75m ²
Male, female, disabled, kids' toilets, mother and baby room	
HVAC room, janitors' room, rooms for staff, storages (instruments, furniture)	

Access by cars and vans is part of design. Bus access is not necessary, but bicycle storage is needed.

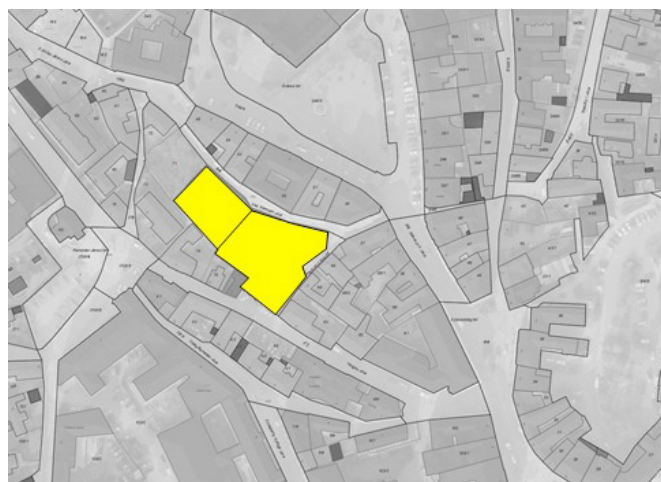


3. DANCE CENTRE

Many local dance ensembles are working in the city without having a designated building. The new project aims to fill this gap with the additional benefit of possible cooperation between the different groups. Consists rehearsal rooms and a large multifunctional event hall. Location is a downtown empty plot near Vas Gereben street. The empty areas should be usable as open-air event spaces.

Entrance hall	300m ²
Reception, porta, cloakroom, 2 ppl. staff. Info materials, ticket counter.	
Meeting place, and receptacle for groups	
Includes service area: Male, female, disabled, kids toilets, mother and baby room	
buffet (storage, cloakroom 15m ²)	
Event hall	200-250m ²
Used mostly as a dance theatre, alternatively a ballroom	
Ballet room	288m ²
2 rooms 12x12m, clearance 4-4,5m, at least 2 walls with mirrors, bars at 2 heights,	
Gymnastique rythmique room	225m ²
15X15m, clearance 4,5-5m, one side wall bars, two sides mirrors with bars	
Tools storage	20m ²
Direct connection to the dance rooms	
(Tools: 3 benches, 10 small boxes, 1 professional gymnastique rythmique mat, 4 small mats. etc)	
Changing room	90m ²
3 rooms (male, female, guest) for 3x30 people (3x30m ²)	
(standard layout: entrance, toilet, shower, changing)	
Teachers changing	10m ²
1 room for 5 people (standard layout: entrance, toilet, shower, changing)	
Office	30m ²
2 rooms 2x15m ² for 4 ppl.	
Kitchenette and lounge	15m ²
Service rooms	60m ²
HVAC room, janitors' room, rooms for staff, storages (instruments, furniture)	

Access by cars and vans is design task. Bus access is not necessary, but bicycle storage is needed.



4. KABÓCA PUPPET THEARTE

The puppet performer group has been working in the city since 2001. The design task is to provide a new building for them using one of the empty downtown plots. A puppet theatre is a place with special atmosphere not necessarily for children. The outdoor areas should fit outdoor performances and events as well.

The two plots have steep slopes, providing an opportunity for underground parking from the lower street.

Entrance Hall	120m ²
toilets (kids/adults, male/female), diaper changing, counter, ticket shop, cloakroom	45m ²
Performance halls	
Babies room	16m ²
Theatre room 160ppl. (12x18m)	216m ²
AV control room	12m ²
Studio for 60 ppl. (8X14m)	112m ²
Social and administrative rooms	
3 changing rooms (male 4ppl / female 4ppl / guest 4ppl 20m2)	60m ²
Staff social rooms(showers, toilets, changing) 3x6m2	18m ²
Fancy-dress cleaning room (washing, drying, ironing)	6m ²
Meeting room (20 - 22 ppl. connected to backstage)	40m ²
Recreational room (treadmill, couch, reading corner)	12m ²
4 guest apartments (2 double bed (2x25m ²), 2 single bed 2x20m2)	90m ²
4 Offices (12m ² each)	48m ²
Storages and workshops	
Technical storage	25m ²
Scenery storage	40m ²
Fancy-dress storage	20m ²
Archives	12m ²
Wood workshop	60m ²
Sewing and cleaning workshop	30m ²
Paint and blacksmith workshop	30m ²

Scenery storage	400m ²
Kitchenette	12m ²
Service rooms	
Staff toilets	10m ²
HVAC rooms	30m ²
Janitors room	4m ²
Underground car parking	to be designed

Additional car storage is a definite need from the city. Access by bus is not needed, but bike storage can be placed underground.



5. PRIMARY HEALTH CARE FACILITY

Primary level in health care systems is the surgery of family doctors. Their duty is more than providing medical services, they are responsible for prevention, for education of local citizens as well. Modern medical facilities should support the healthy way of living and giving aid to it. The image of the buildings should also represent this humanist philosophy.

Lobby		30m ²
Reception desk, cloakroom, 2 ppl. staff. Back office and storage +10+5m ²)		
Connected service area: Male, female, disabled, kids toilets, mother and baby room, kitchenette		
Multipurpose training room		40m ²
serves for educative trainings, events, day care, etc. - opening directly from the lobby		
Waiting rooms	3 x	50m ²
3 separated spaces connected to the 3 different surgeries		
Family doctor surgeries	2 x	35m ²
Each consists of one nurse room and one examination/consultation room 17+18m ²		
Dental surgery	2 x	16m ²
Diagnostic room		16m ²
Staff changing room		10m ²
Office		30m ²
2 rooms 2x15m ² for 4 ppl.		
Kitchenette		10m ²
Service rooms		60m ²
HVAC room, storages (instruments, furniture)		

Access by cars is design task.