

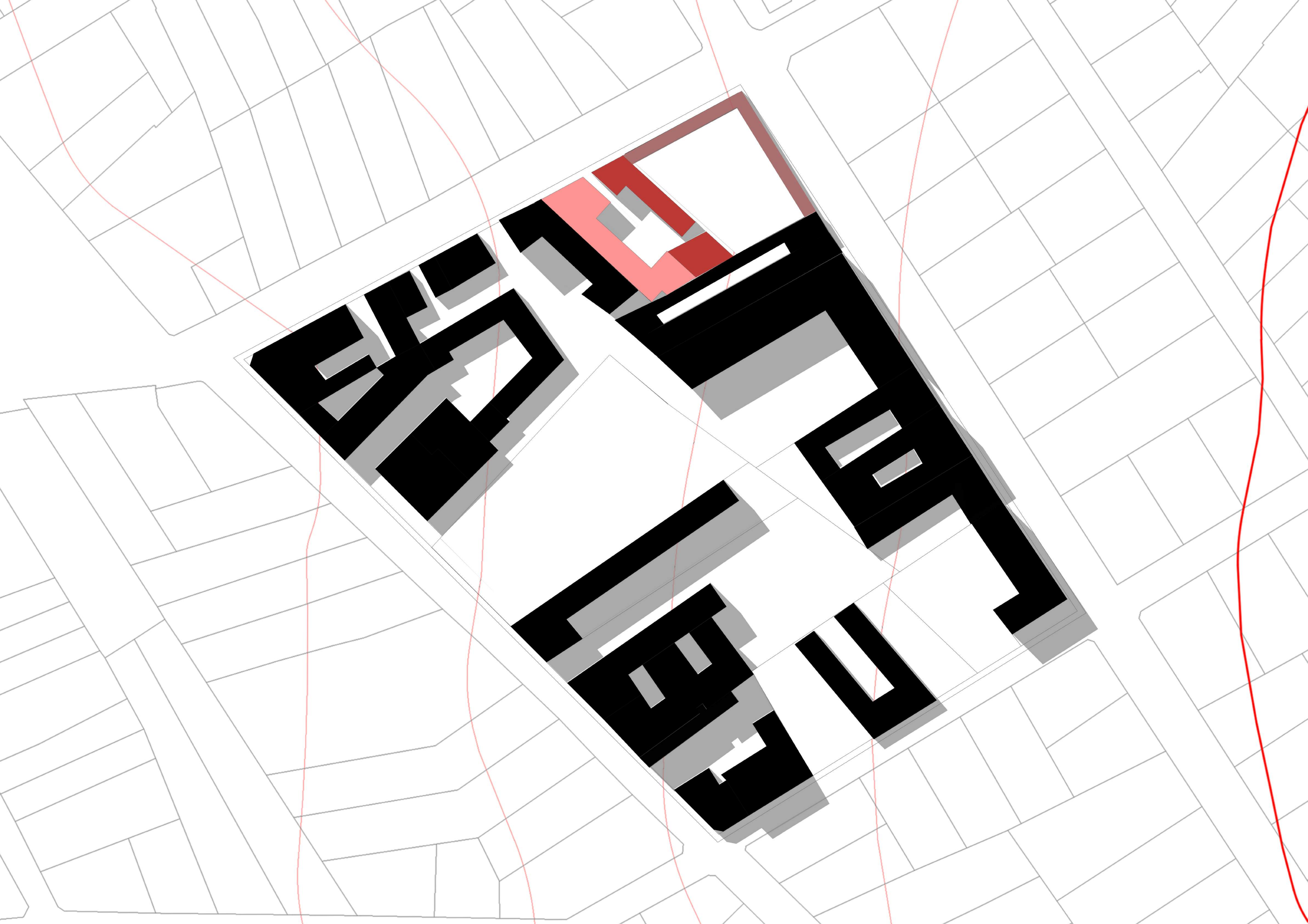
TRANSPARENCY

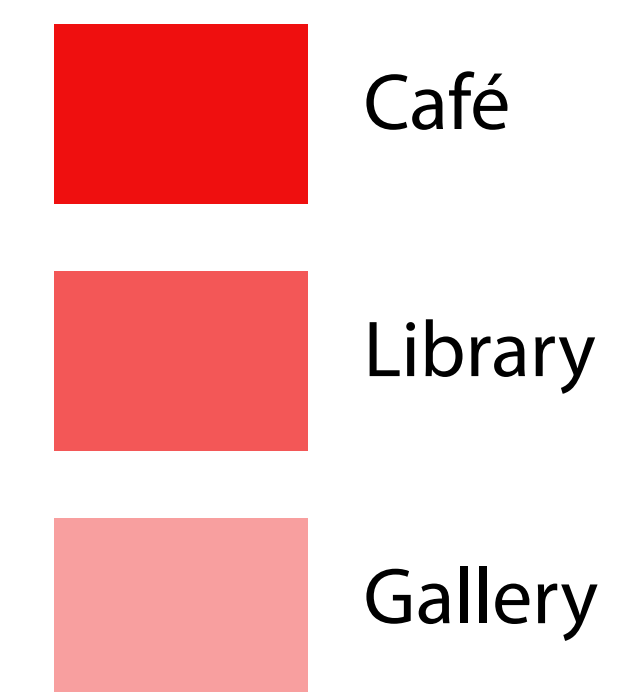
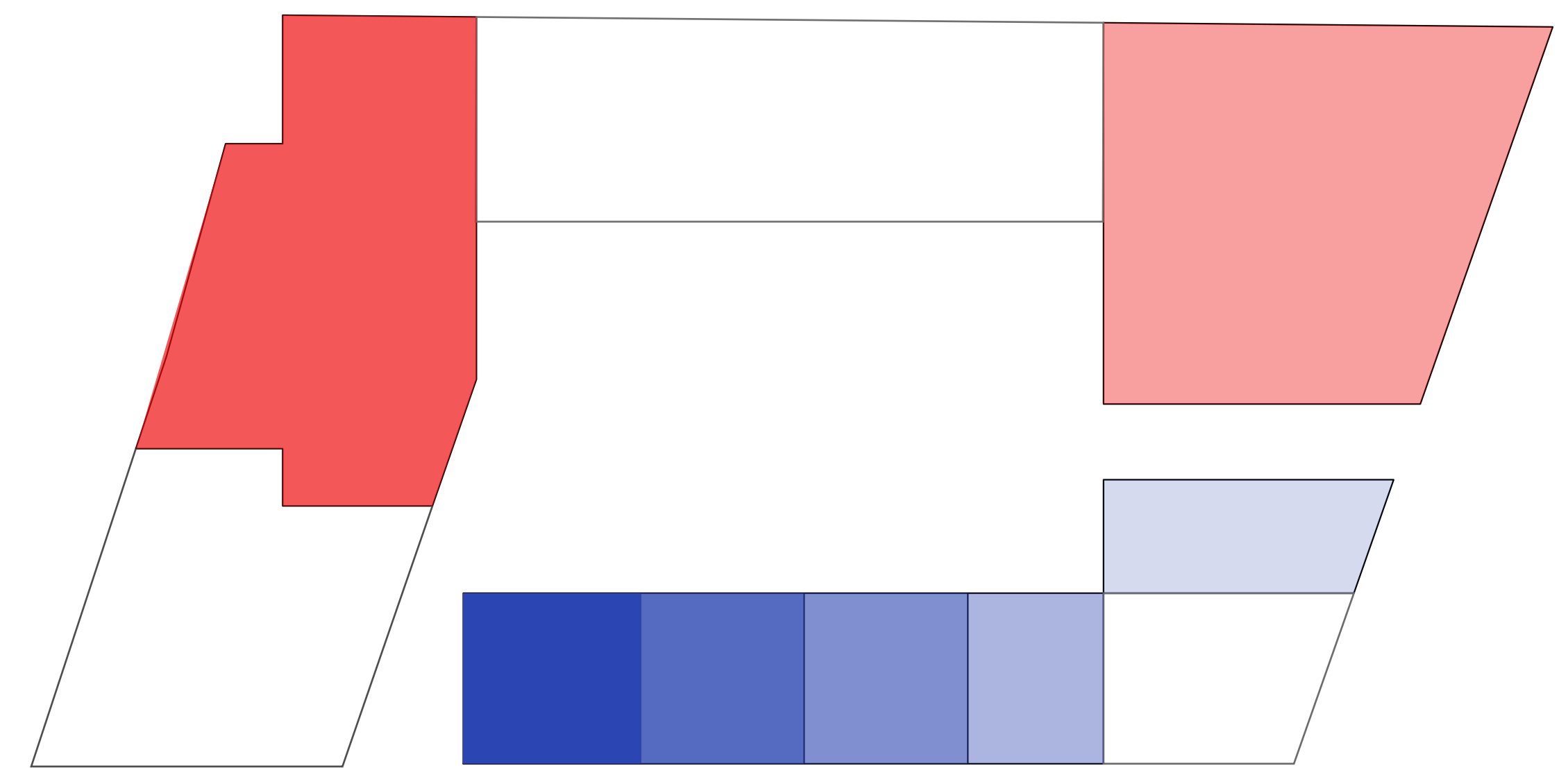
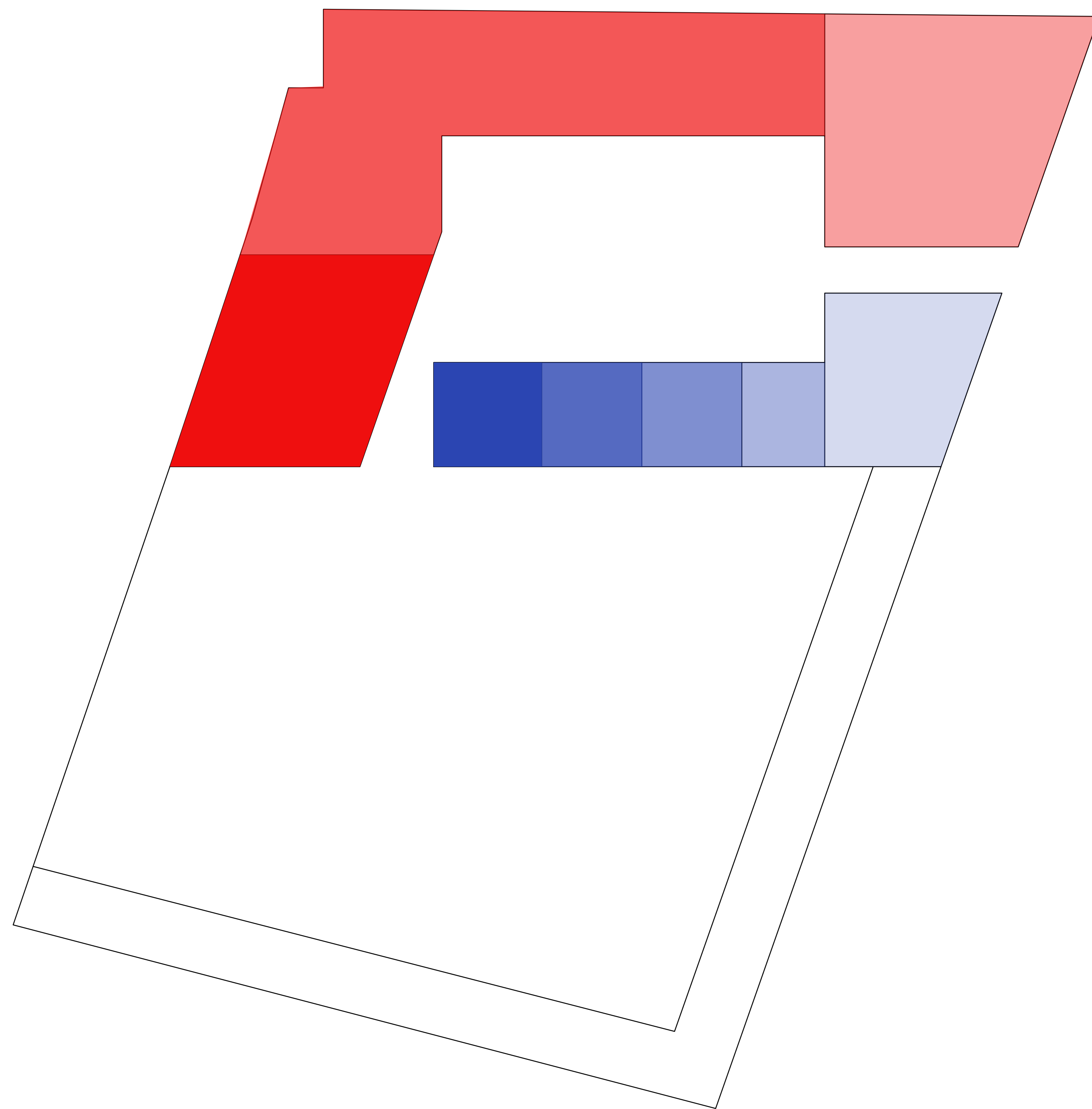
Martina Checconi | Sanya Inthavong | Tiago Santos

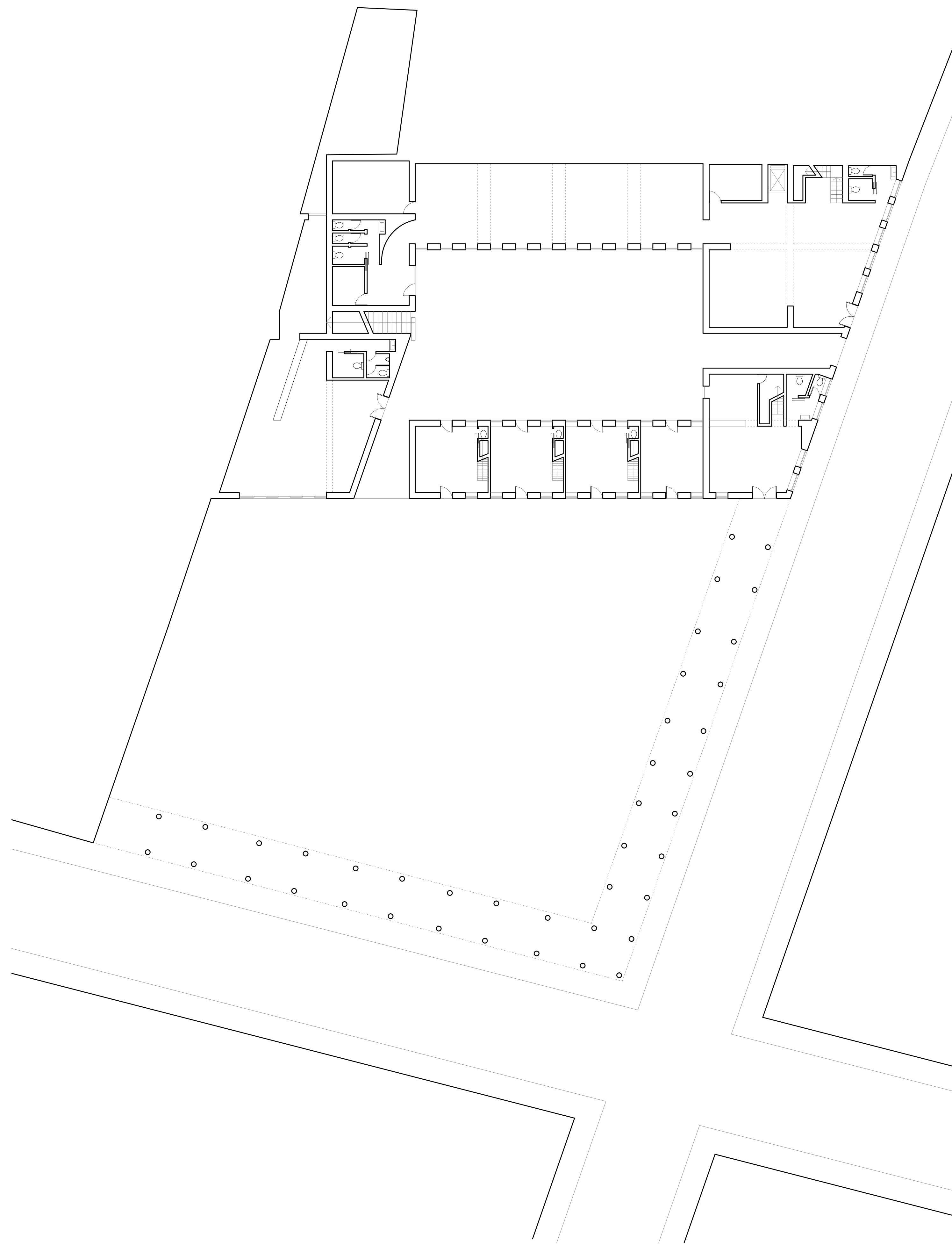
2018

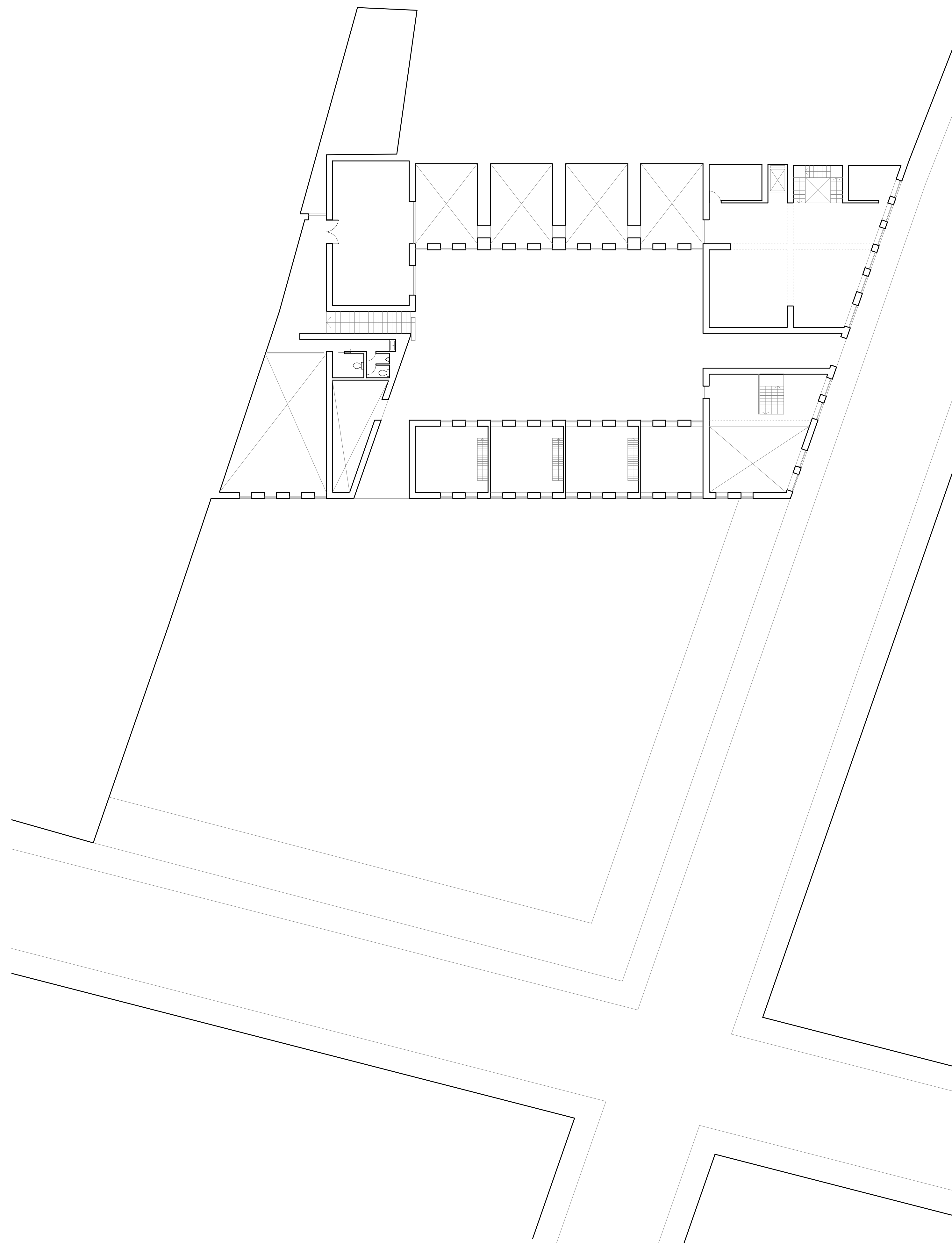


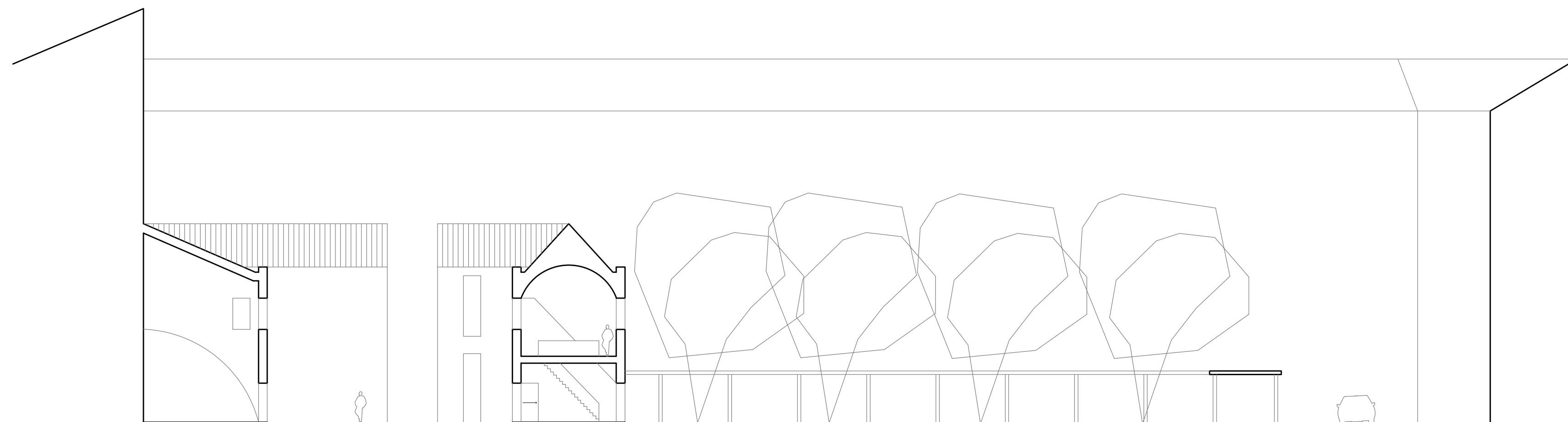
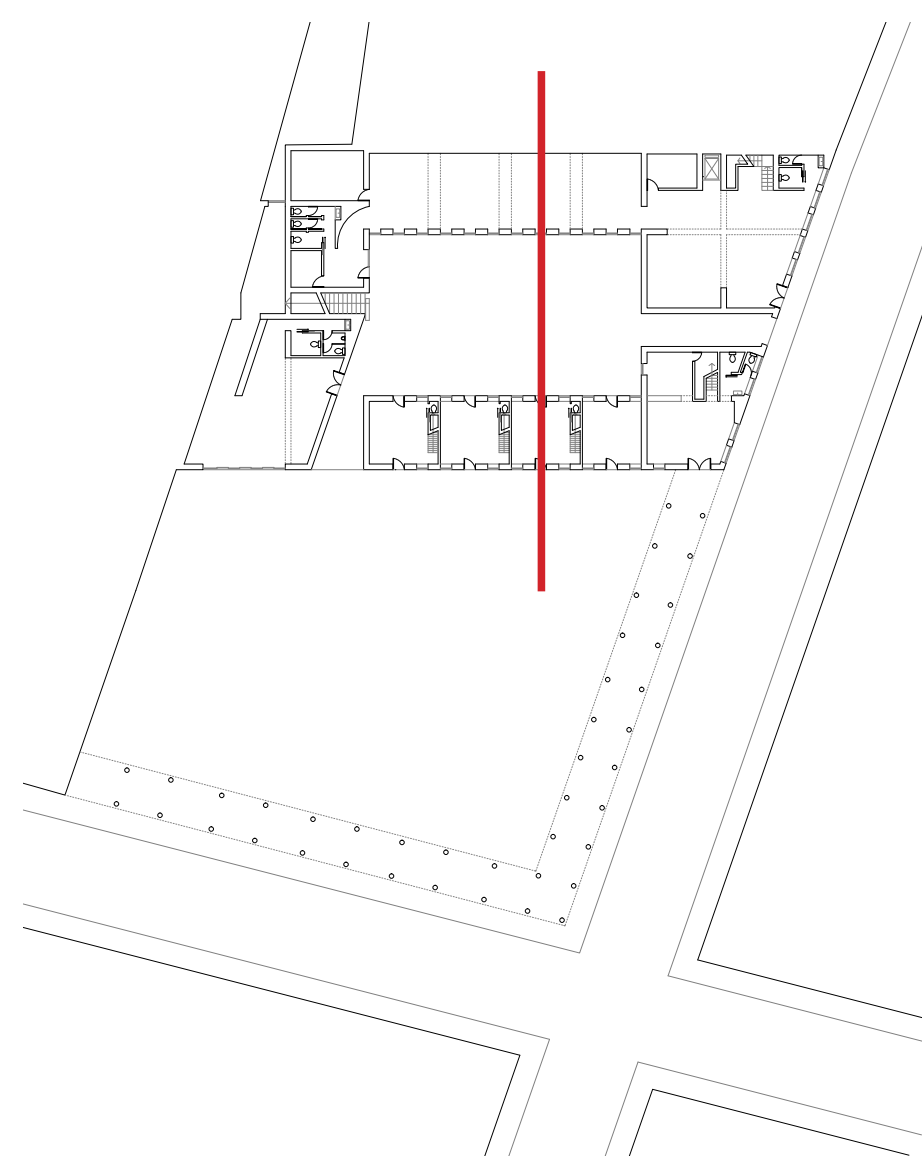
Project Based Design F | BME





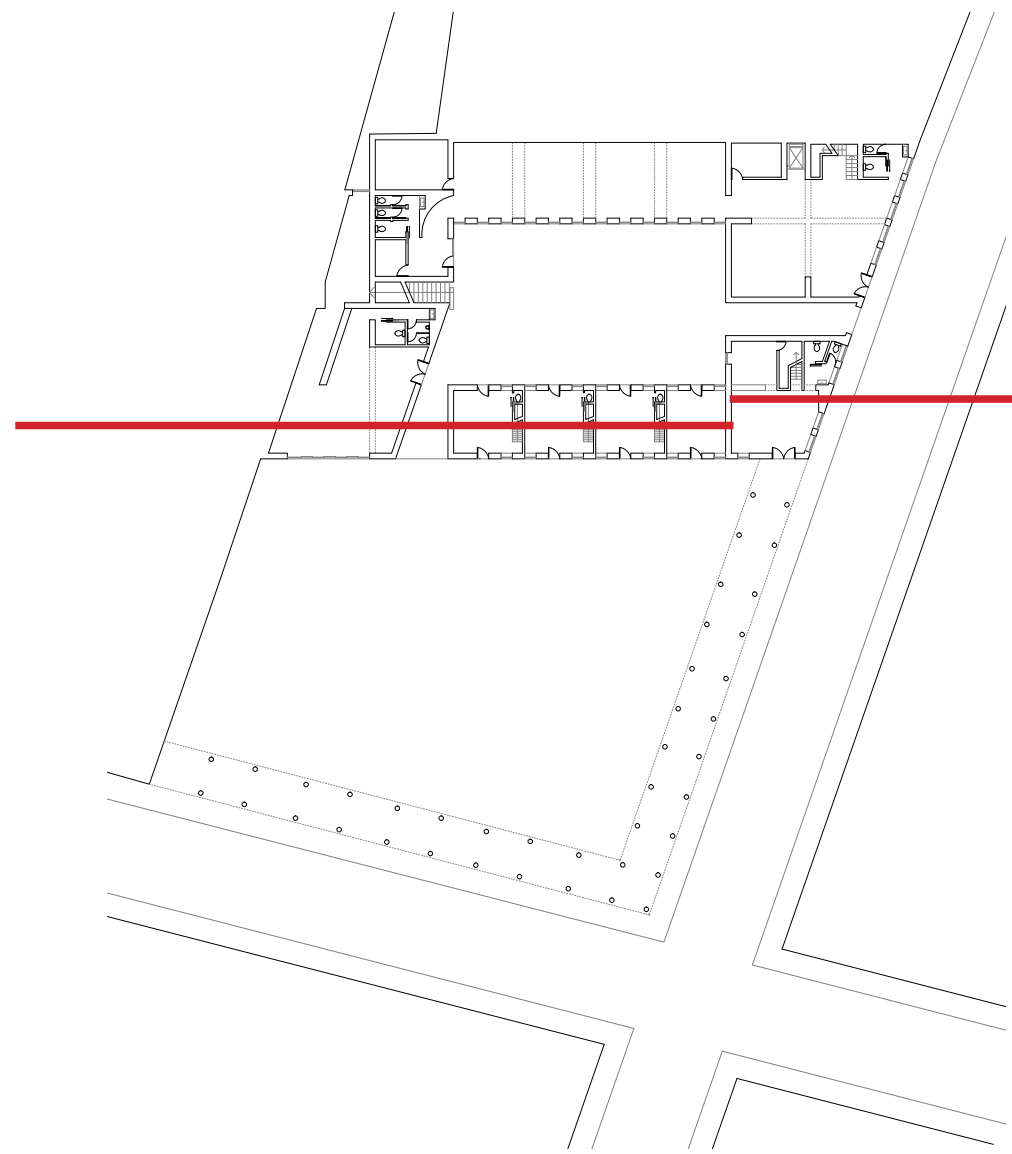
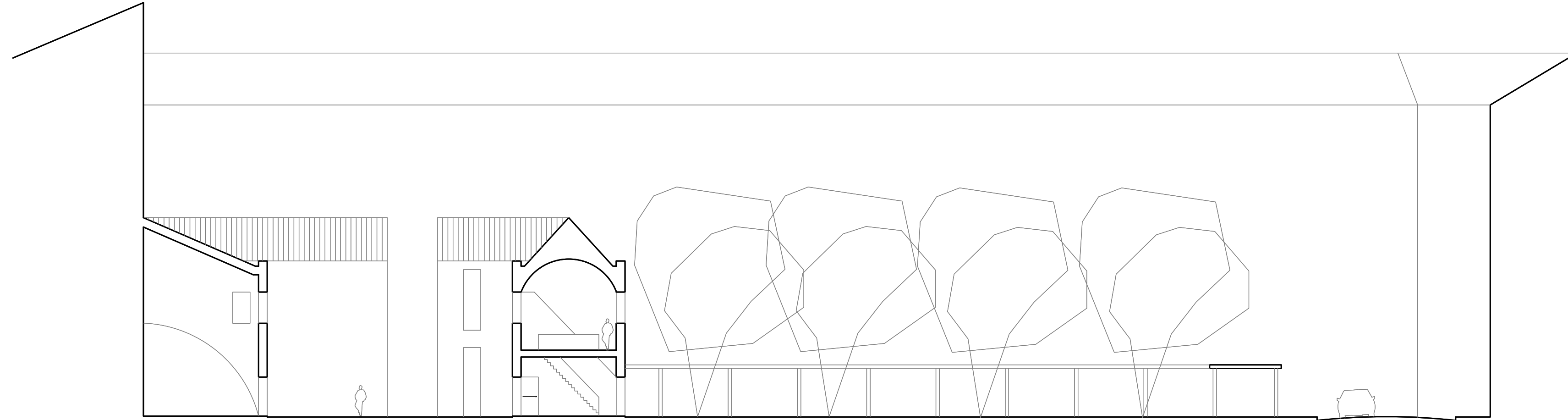






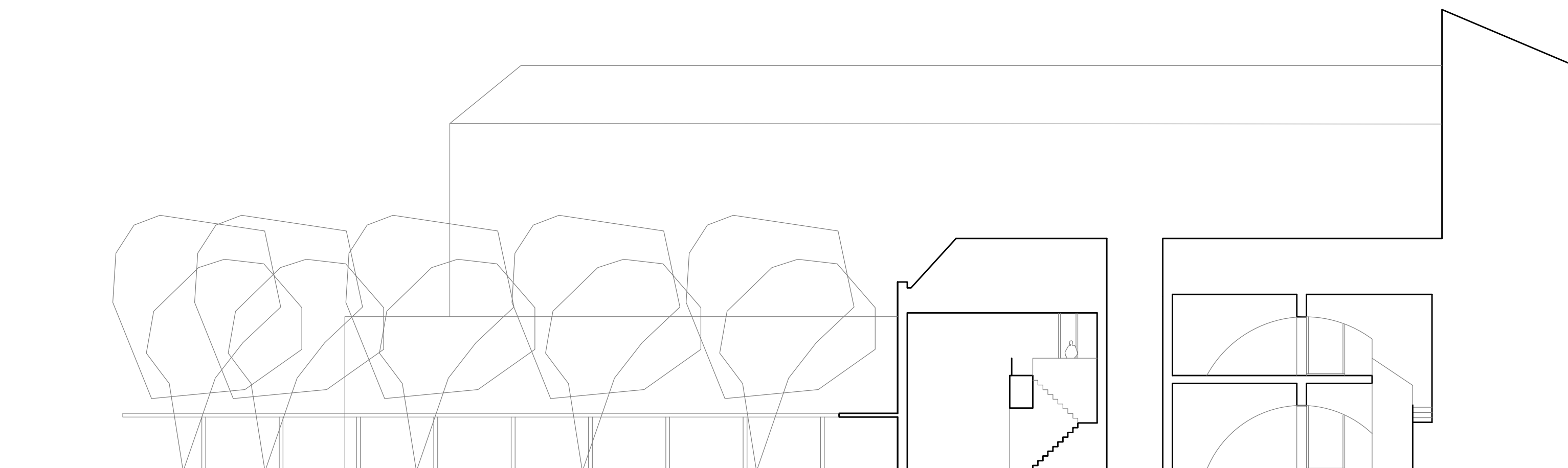
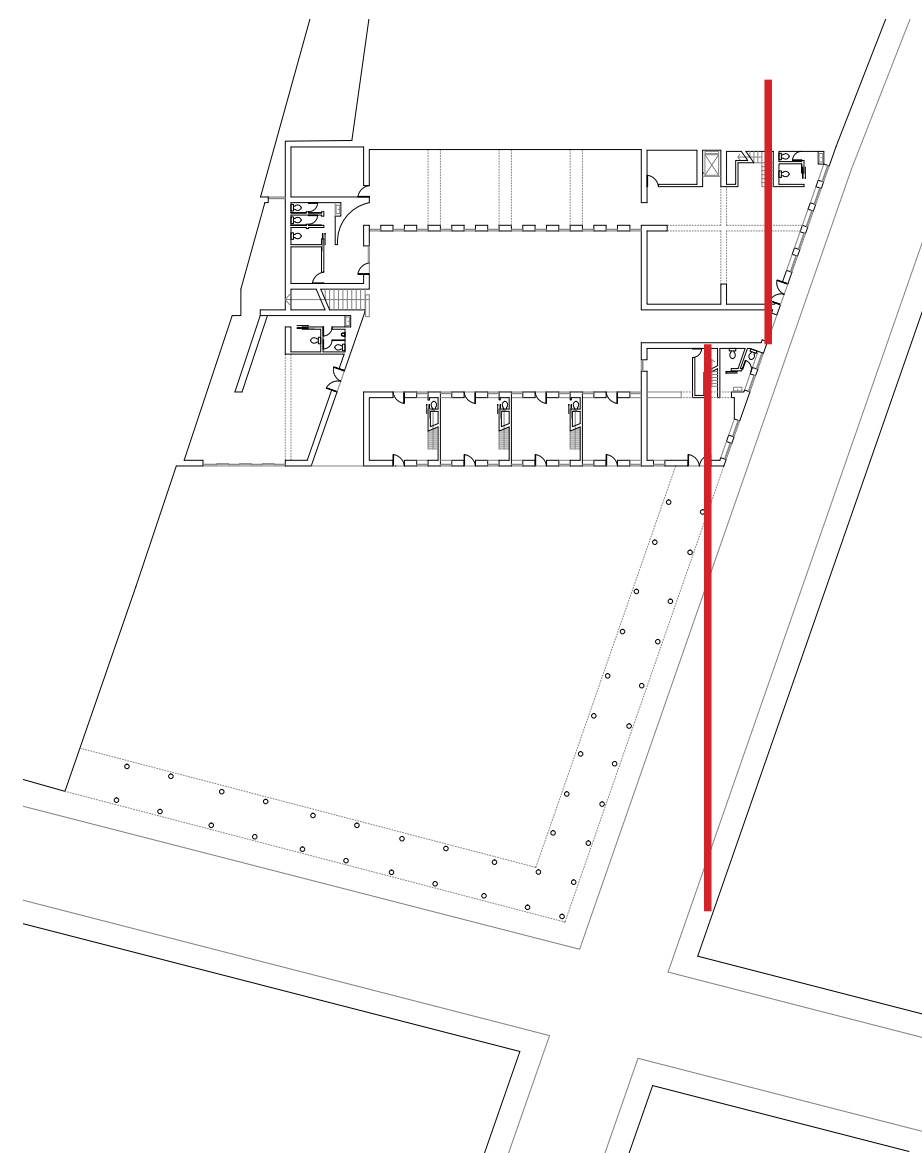
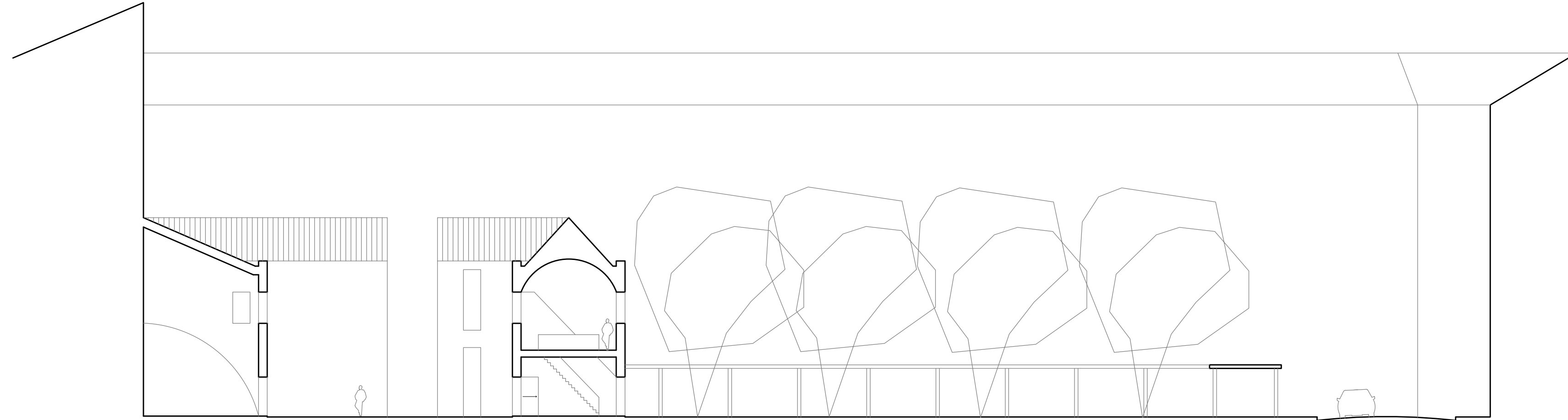
A-A' SECTION | 1/200





BB' SECTION | 1/200



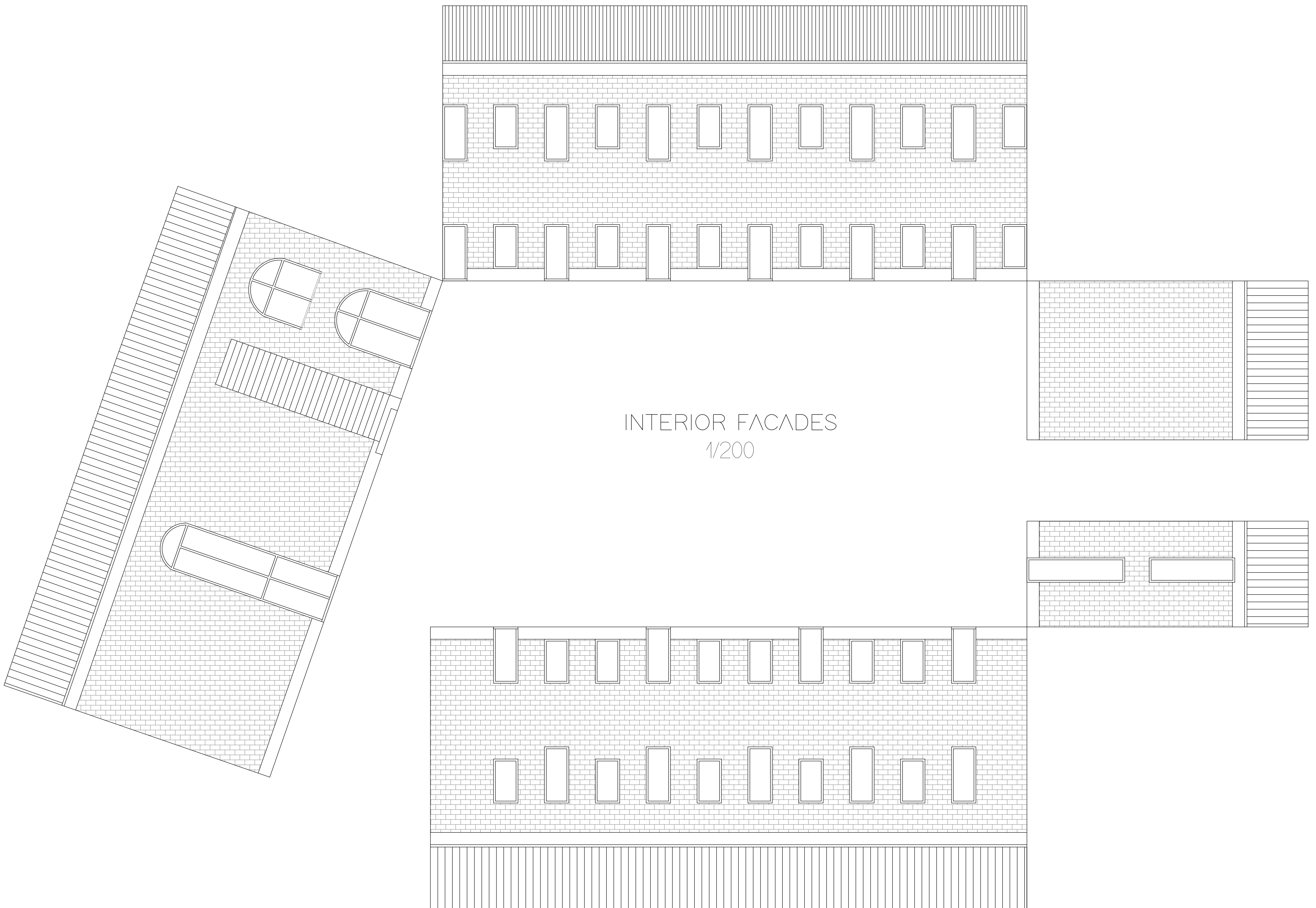


CC' SECTION | 1/200



SZERDAHELYI UTCA FACADE | 1/200

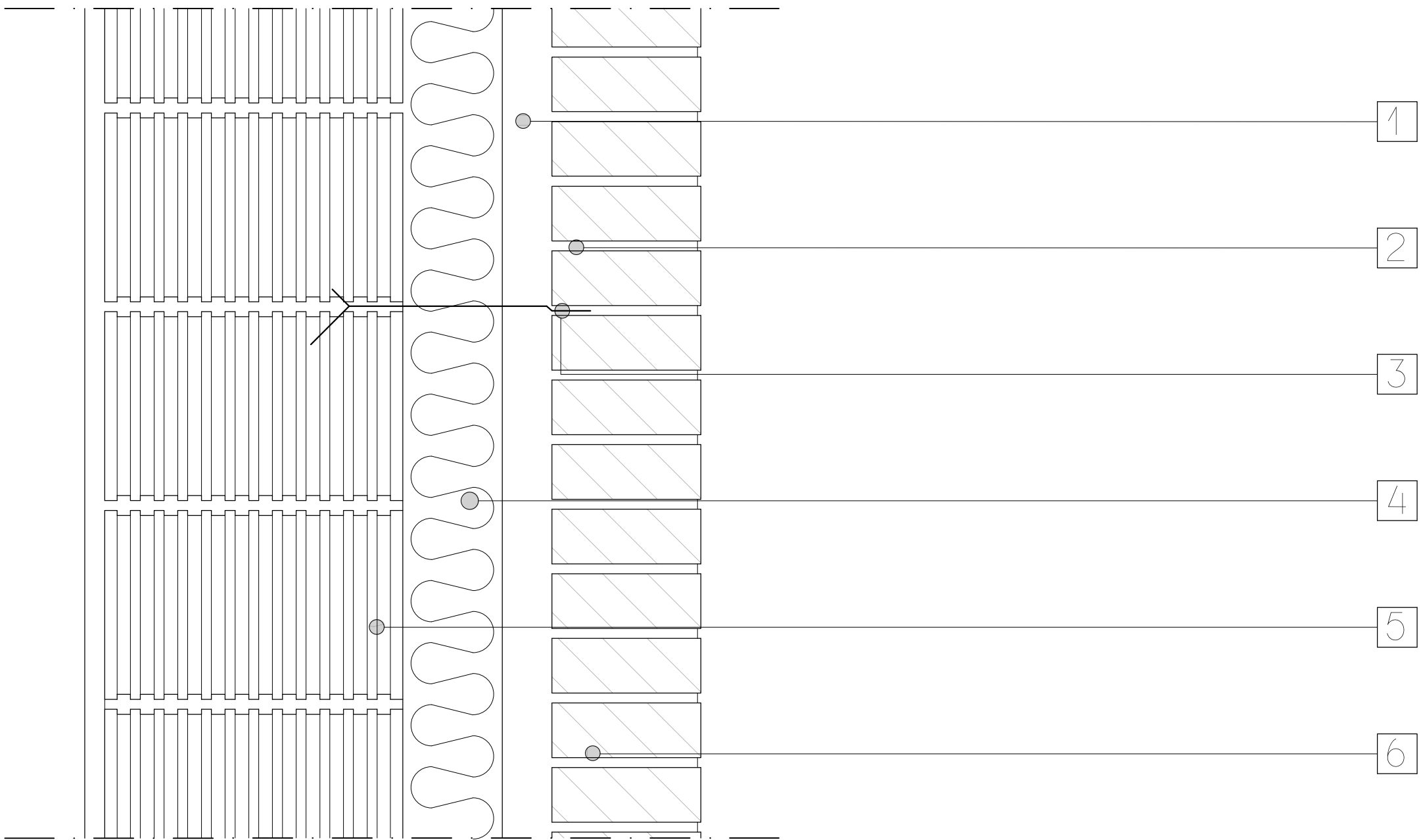




INTERIOR FACADES
1/200



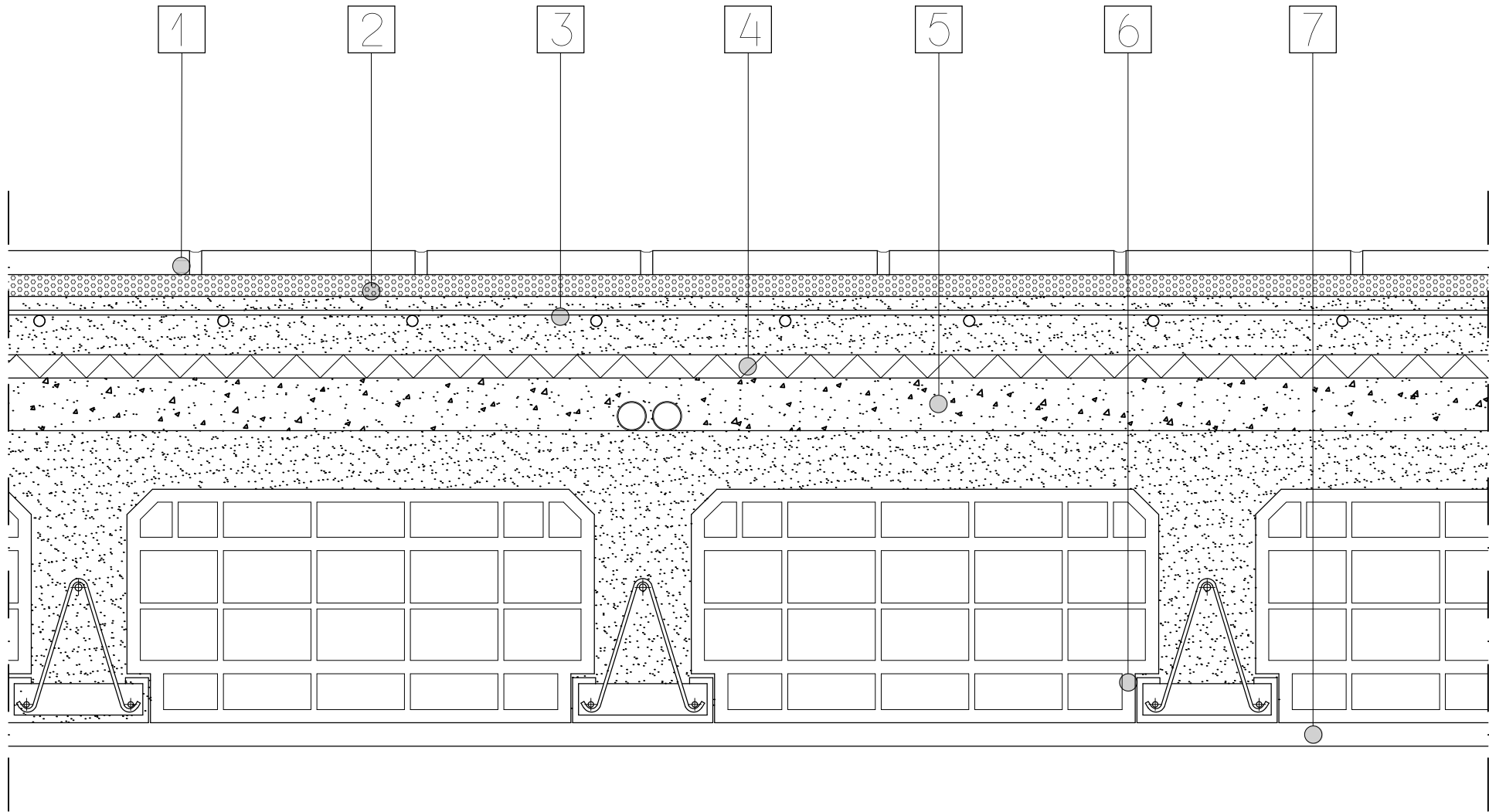
12 30 10 5 15



- 1 Interspace
- 2 Cement lime
- 3 Metal brackets
- 4 Thermal insulation panel
- 5 Brick blocks
- 6 Bricks

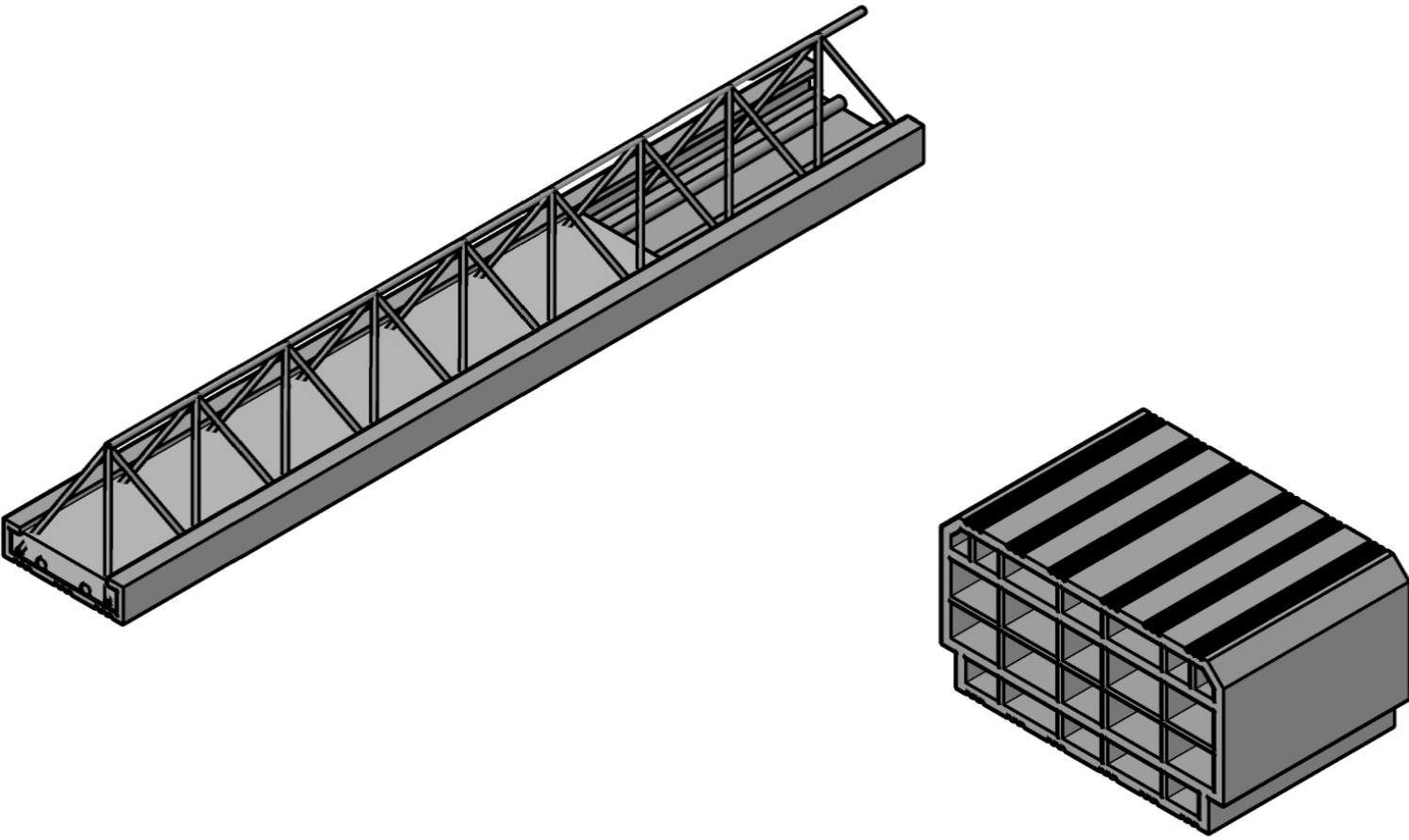
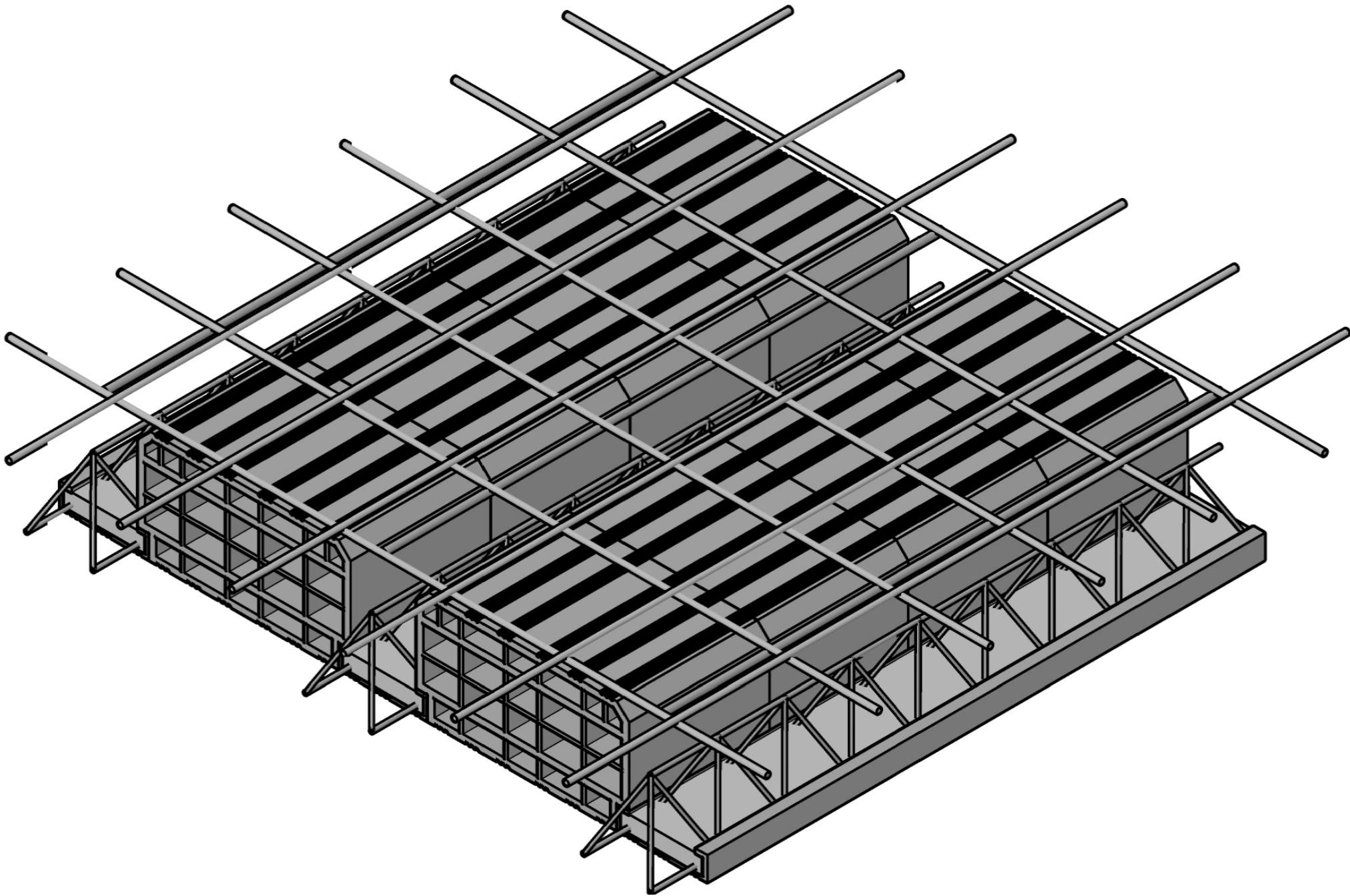


BRICK CONCRETE SLAB | 1/5

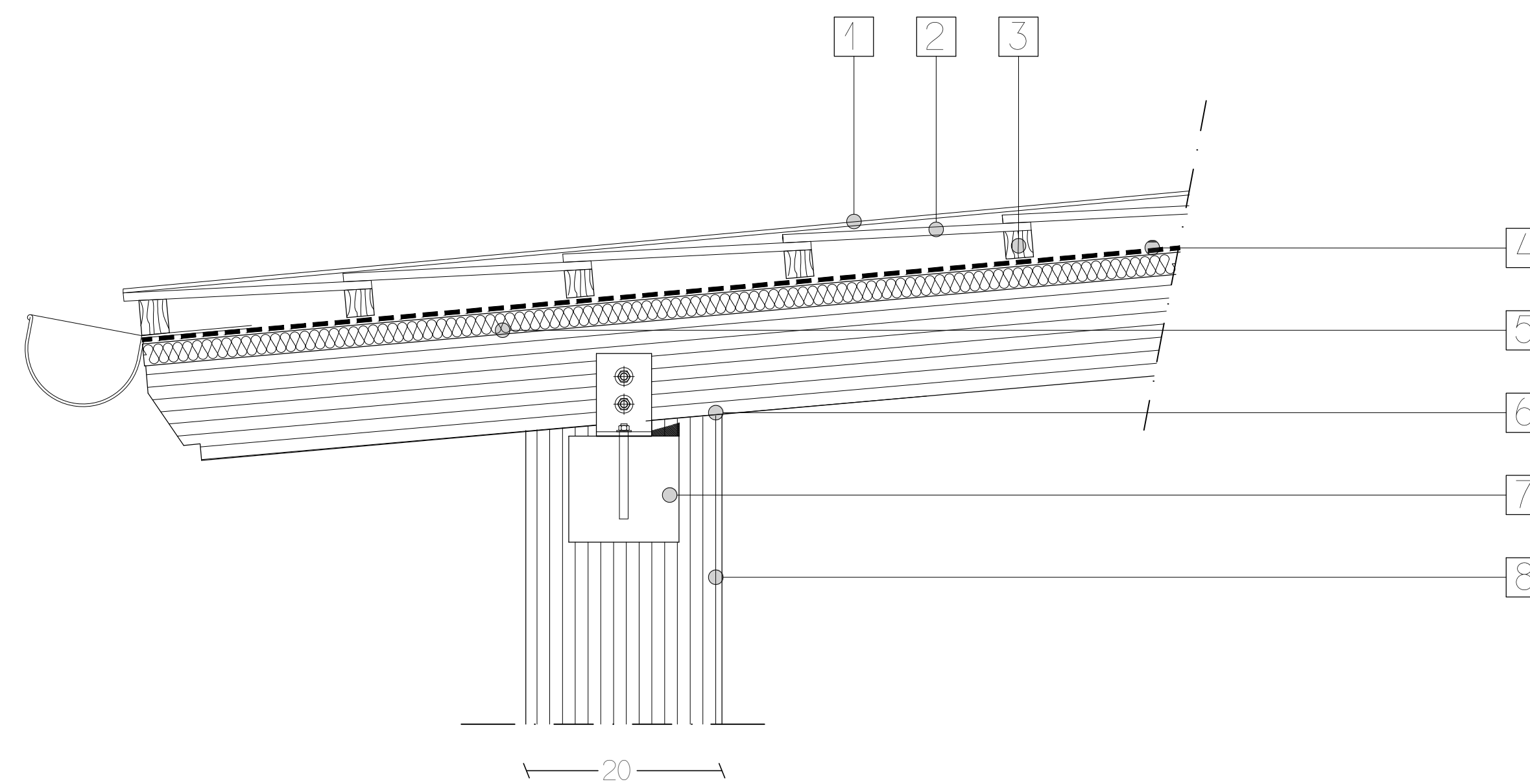


41+5+12+1,5+5+20+21

- 1 Floor
- 2 Cement lime
- 3 Reinforced concrete layer
- 4 Elastic layer
- 5 Lightweight concrete installation layer
- 6 Steel-brick load bearing layer
- 7 Plaster



GLUED LAMINATED TIMBER ARCADE | 1/5



- 1 PVC sheed
- 2 Timber planking
- 3 Joists
- 4 Vapor barrier
- 5 Polystyrene insulation panel 2,5 cm
- 6 Glued laminated timber beam 10 cm
- 7 Metal connection
- 8 Glued laminated timber pillar

TRANSPARENCY

Martina Checconi

| Sanya Inthavong

| Tiago Santos

2018



Project Based Design F | BME