

# CANTILEVER

**BME** Dept. of Public Building Design  
Dept. of Building Mechanics, Materials & Structures



BUDAPEST AQUINCUM

INTERDISCIPLINARY PROJECT DESIGN SPRING 2018

[BERGERON, Aline; FALOMIR TORREGROSA, Jorge; MUÑOZ CERVANTES, Rafael; SAILLET, Anouk]

## URBAN PLANNING

From a general view, the aim point is to connect the different zones that are on the area.

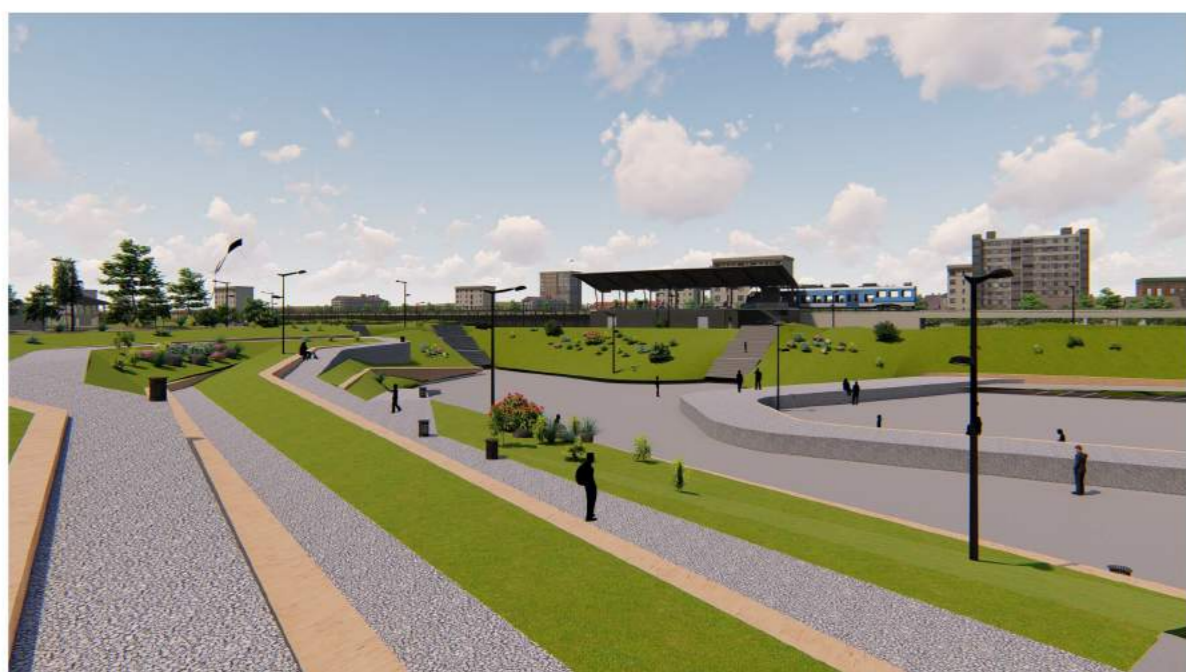


## SPACES

On different points at the path, there is a cover space with the cantilever. On these places, we can find different

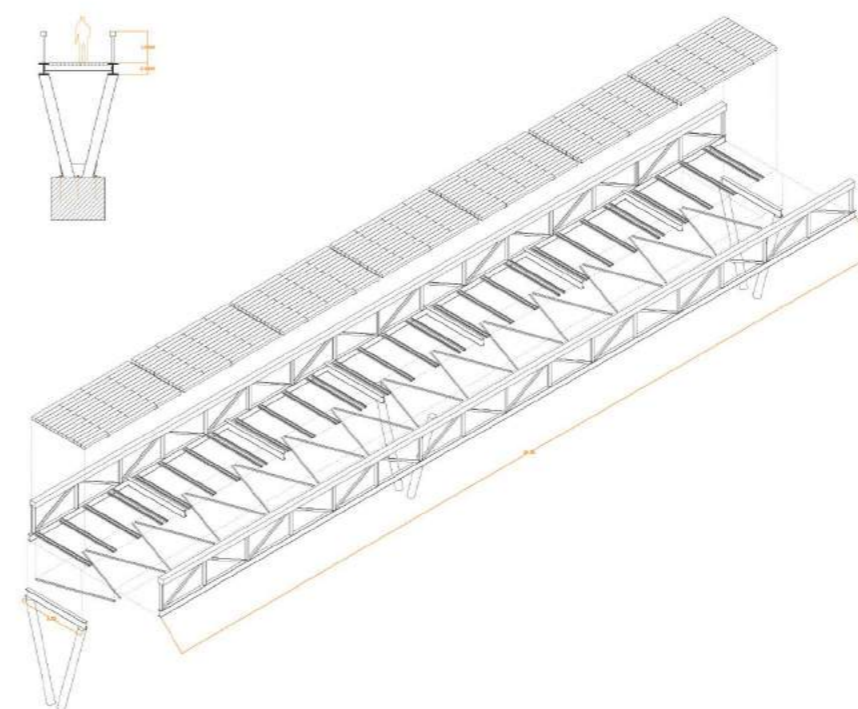


## OPEN SPACE



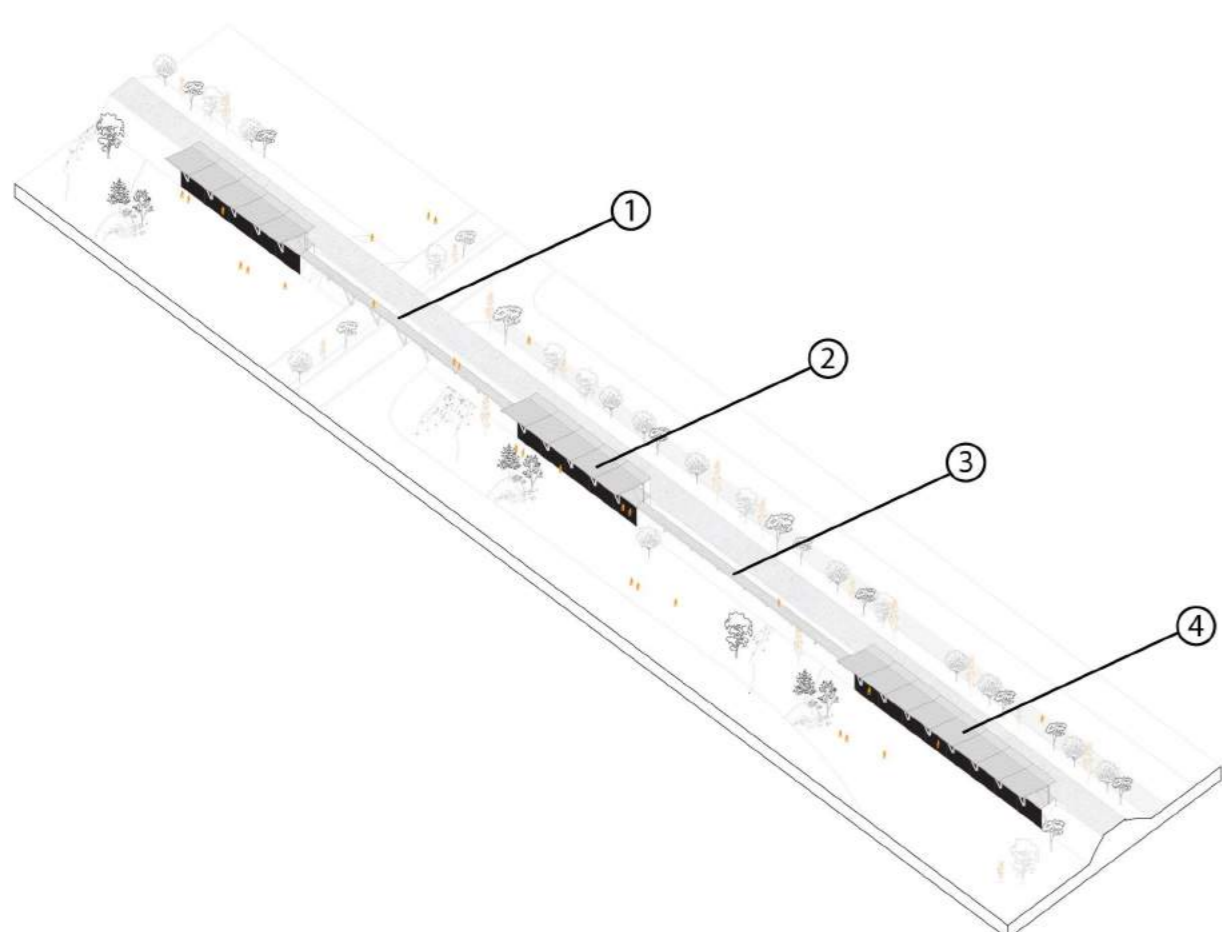
Where the two important tracks match, is placed an open space where people can enjoy the weather, do a free exhibition, or people from the university can eat or rest.

## STRUCTURE



Construction of the bridge is, in one side, the primary structure, with iron beams. Later, a sub-structure it's installed, also with iron. It has Tensors and compressors, with cables and beams, and, at the end, prefabricated concrete pieces cover the final path.

## SECTION



This is how the Cantilever and the path is going to change at every point. From the top, you can have views to the open space, the ruins or the landscape.



View from the Train Station

