

# DESIGN METHODOLOGY

ZOLTAN SCHRAMMEL

ARCHITECT, H.ASSIST.PROF.

OF DEPT. OF PUBLIC BUILDING DESIGN

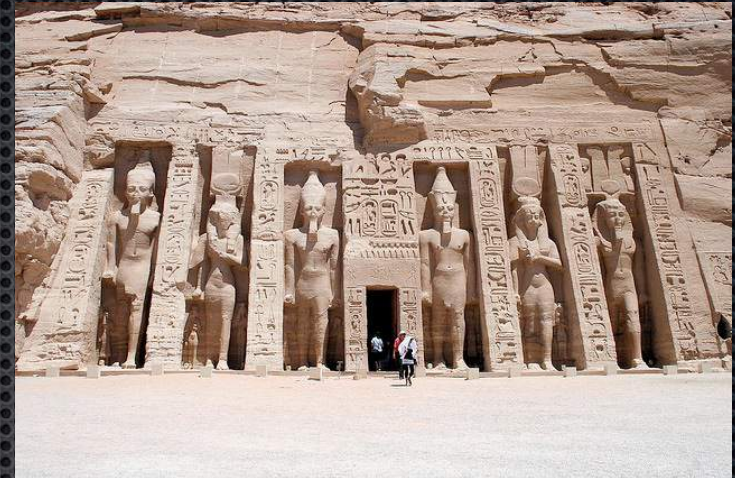
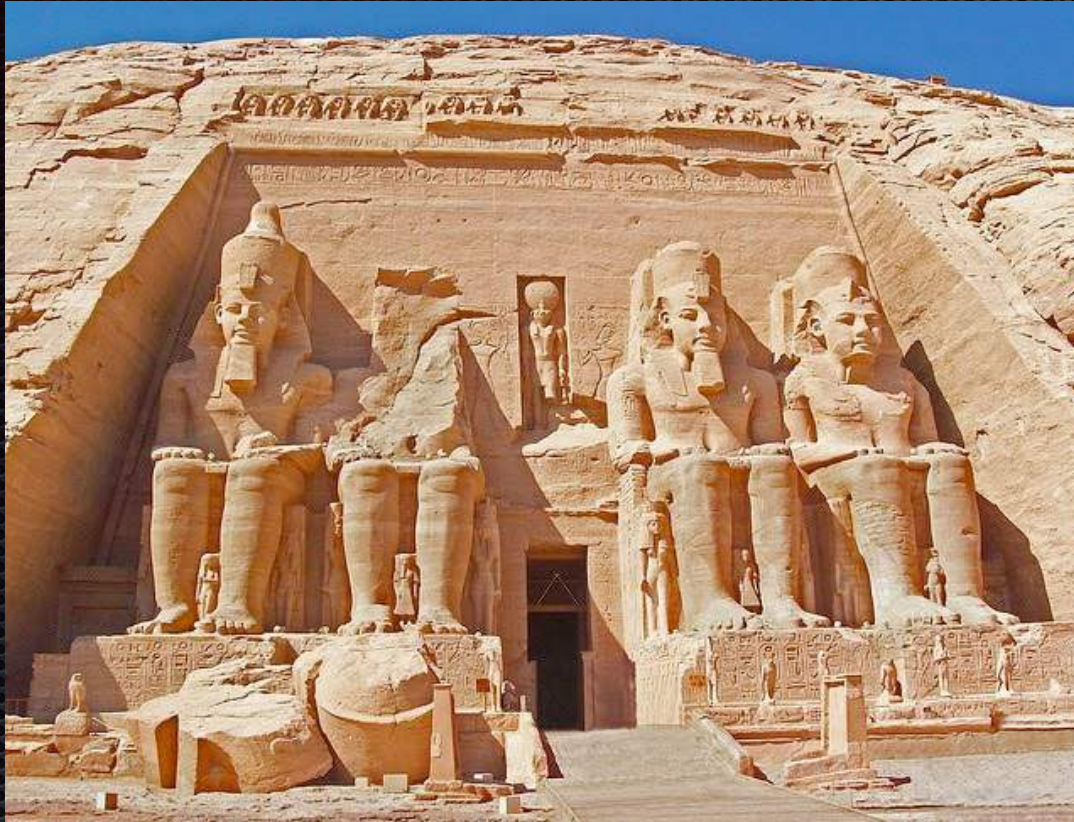
- ✦ PROGRAM OF SEMESTER COURSE
- ✦ 0. PREFACE - WELCOME - INTRODUCTION
- ✦ 1. WAY OF DESIGN
  - ✦ - COMPONENTS,
  - ✦ - METHODS,
  - ✦ - APPROACH
- ✦ 5. DESIGN FACTORS
- ✦ 6. DESIGN PHASES AND MEMBERS
- ✦ 7. ARCHITECTURE AND THE ARTS
- ✦ 8. SUSTAINABILITY IN ARCHITECTURE
- ✦ 9. DESIGN WITH ARCHITECTURAL MONUMENTS
- ✦ 10. SUMMARY, NEW CONCEPTS OF DESIGN

# ARCHITECTURE AND THE ARTS

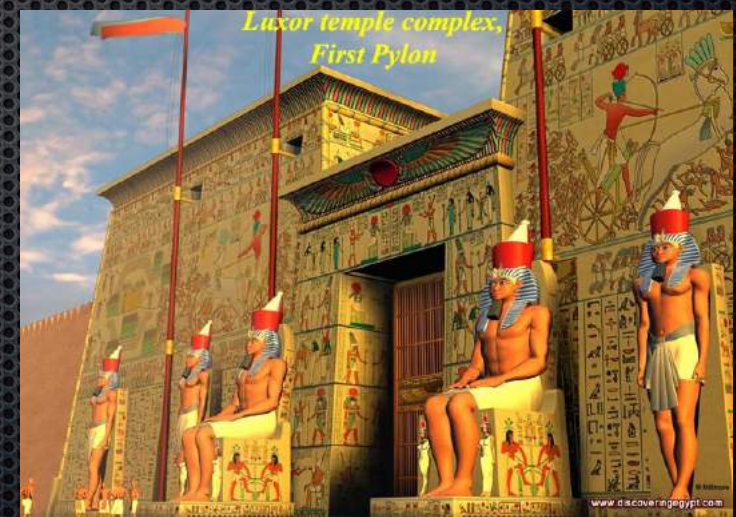
about their relationship

- ✦ SYNTHESIS (one cannot exist without the other)
- ✦ SUBORDINATE ART (applied decoration)
- ✦ SUBORDINATE ARCHITECTURE (support)

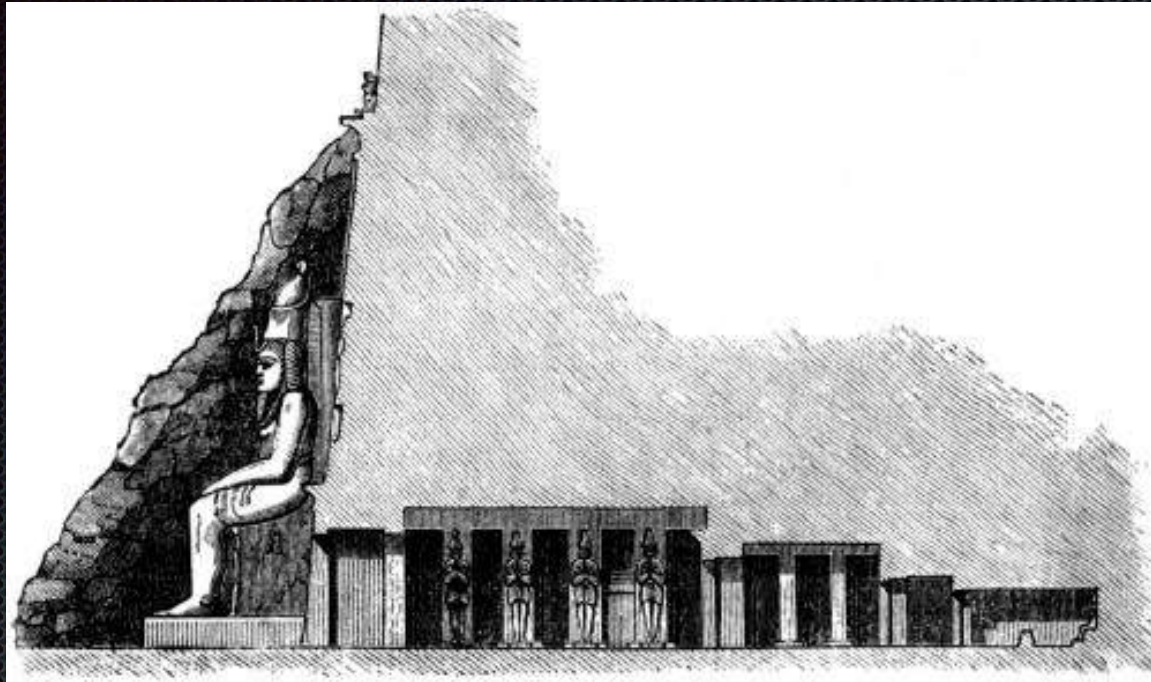
- SYNTHESIS (one cannot exist without the other)



- Temple of Abu Simbel 13th C BC



- SYNTHESIS (one cannot exist without the other)



- Temple of Amon Re 15th C BC



- SYNTHESIS (one cannot exist without the other)



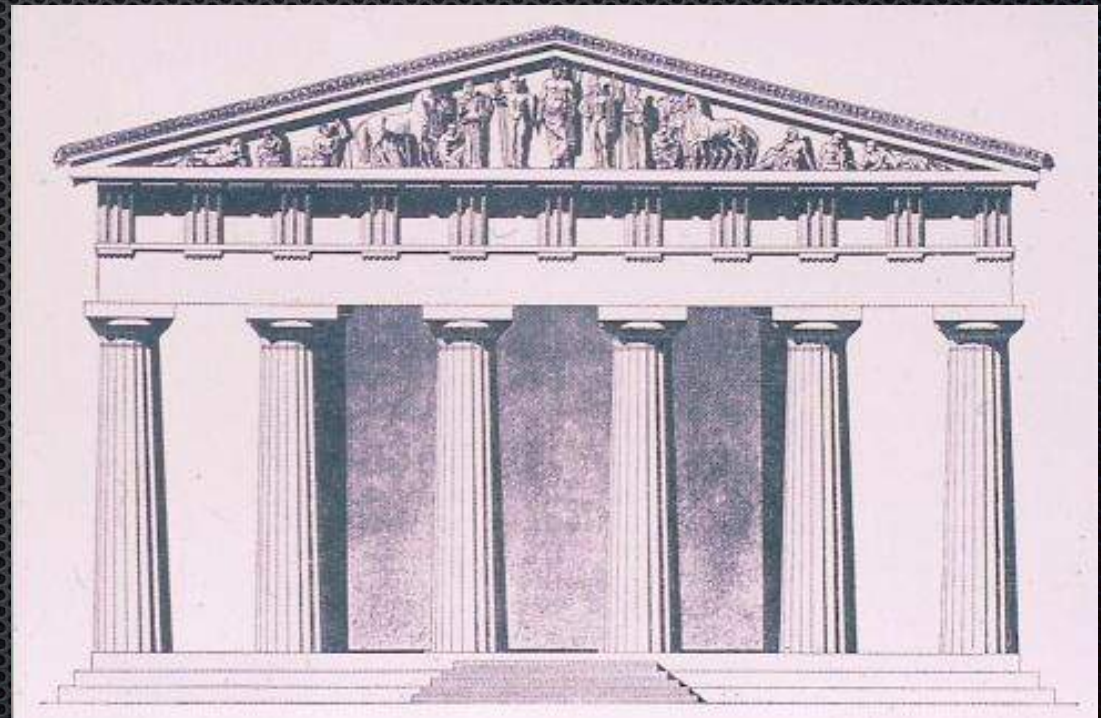
- Erechtheion 5th C BC

- SYNTHESIS (one cannot exist without the other)



- Parthenon 5th C BC

- Zeus temple plan

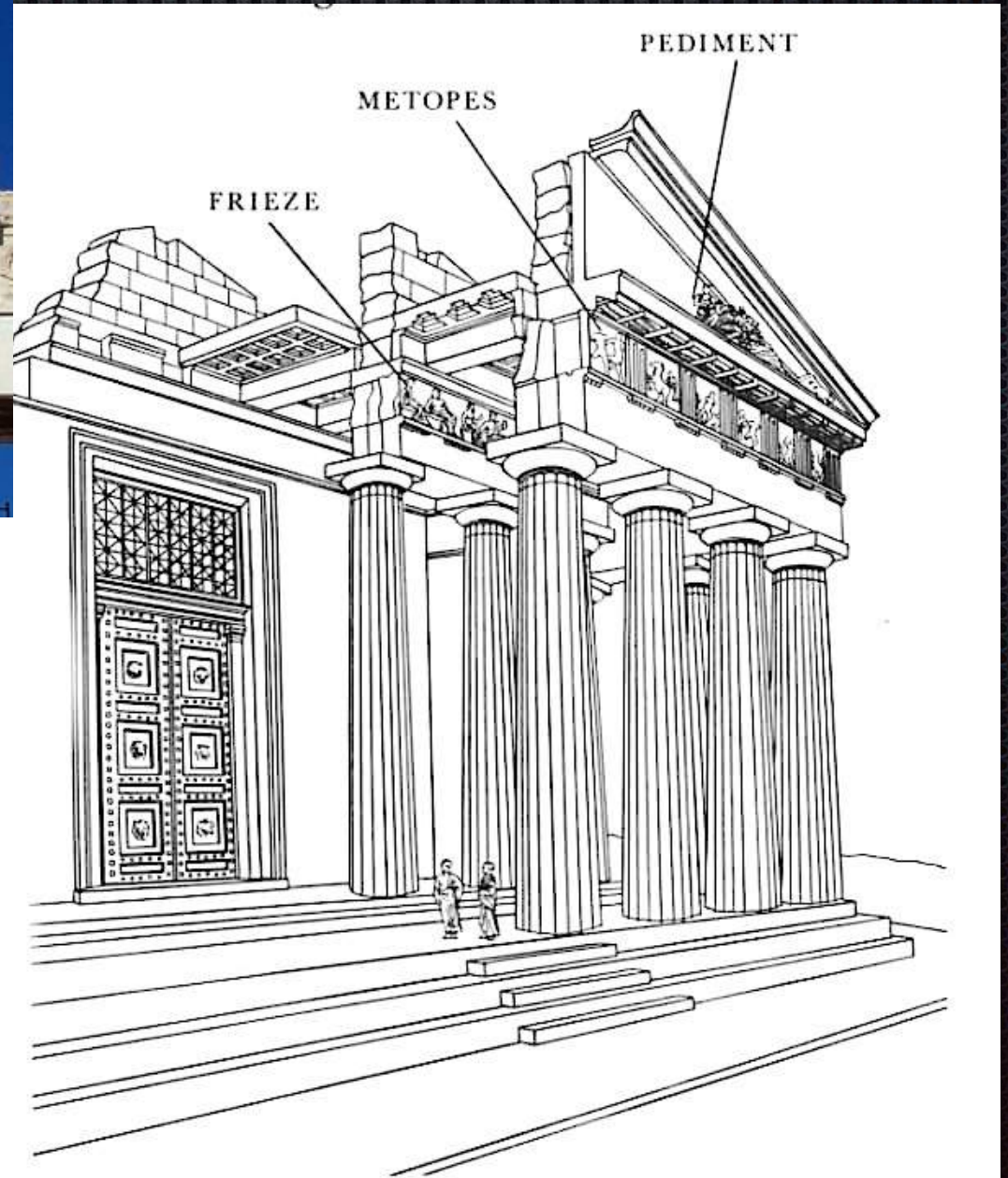


- SYNTHESIS (one cannot exist without the other)



- Pediment of Parthenon 5th C BC

- SYNTHESIS (one cannot exist without the other)



- Art elements of Parthenon 5th C BC

- SYNTHESIS (one cannot exist without the other)



- Baptisterio Florence 1059-1128

- SYNTHESIS (one cannot exist without the other)



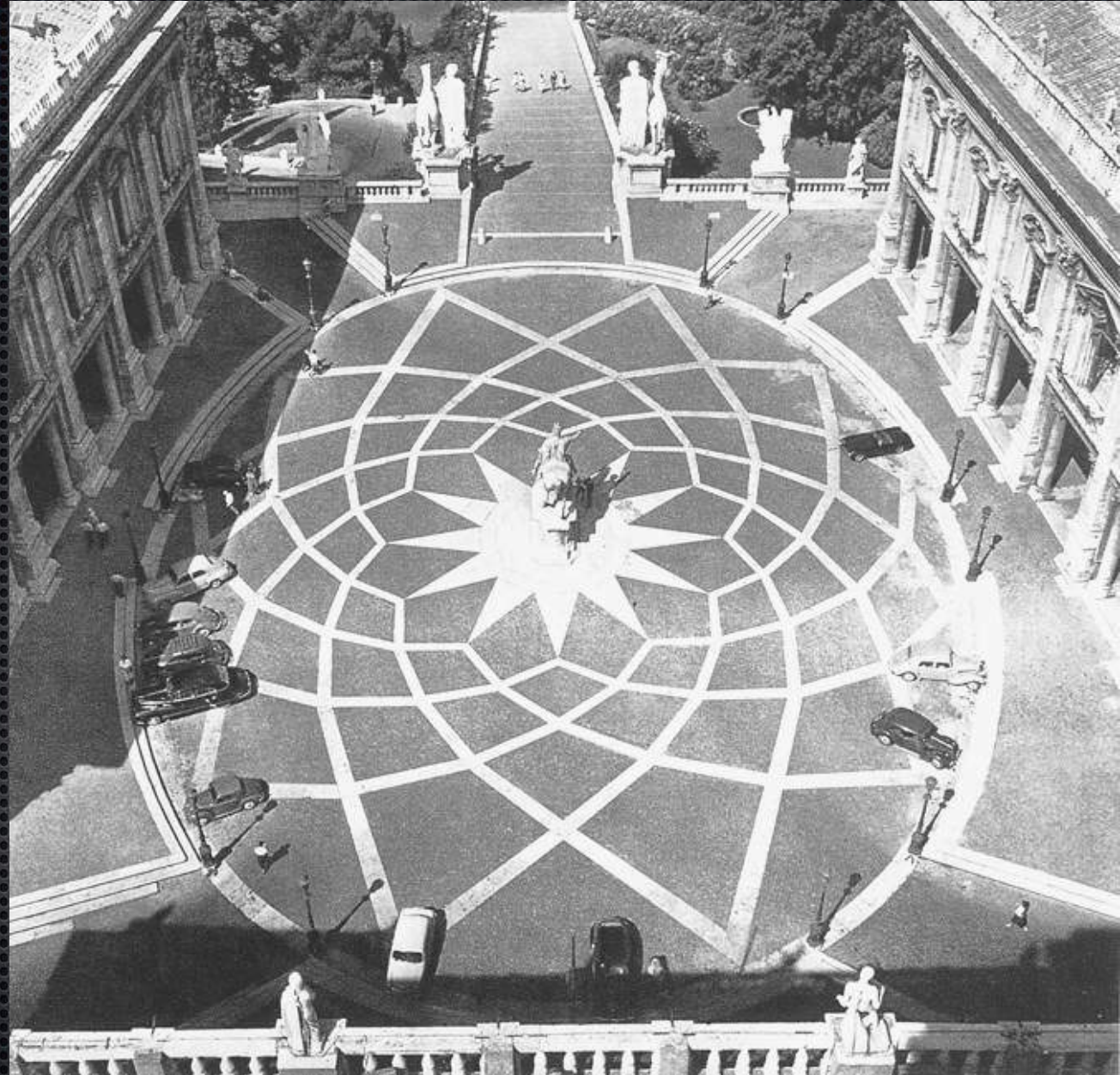
- Dom Aachen 814

- SYNTHESIS (one cannot exist without the other)



- Autun, France Cathedral 12th C
- romanesque style

- SYNTHESIS (one cannot exist without the other)



- Piazza di Campidoglio
- Michelangelo Buonarroti
- Rome 1538-1650

- ✦ SYNTHESIS (one cannot exist without the other)
- ✦ SUBORDINATE ART (applied decoration)
- ✦ SUBORDINATE ARCHITECTURE (support)

- SUBORDINATE ART (applied decoration)



- Cave paintings Argentina 15000 BC
- Reliefs in cave France 9000 BC



- SUBORDINATE ART (applied decoration)



- Palace of DAREUS 5th C BC
- Persepolis

- SUBORDINATE ART (applied decoration)



- Floor mosaic, Portugal 1st C

- SUBORDINATE ART (applied decoration)



- Chicago, hotel 20th C
- romantic style

- SUBORDINATE ART (applied decoration)



Sultan Ahmed Blue Mosque, Istanbul 616 AD

- SUBORDINATE ART (applied decoration)



- Capella Scrovegni, Padua, 13th C - GIOTTO

- Capella Sistina, Vatican, 1508-1512 - MICHELANGELO



- SUBORDINATE ART (applied decoration)



- Baroque Grafitto House
- Telc, Czech Republic

- SUBORDINATE ART (applied decoration)



- Khajuraho temple India, 13th C

- Meenakshi Hindu-Tamil temple 14th C

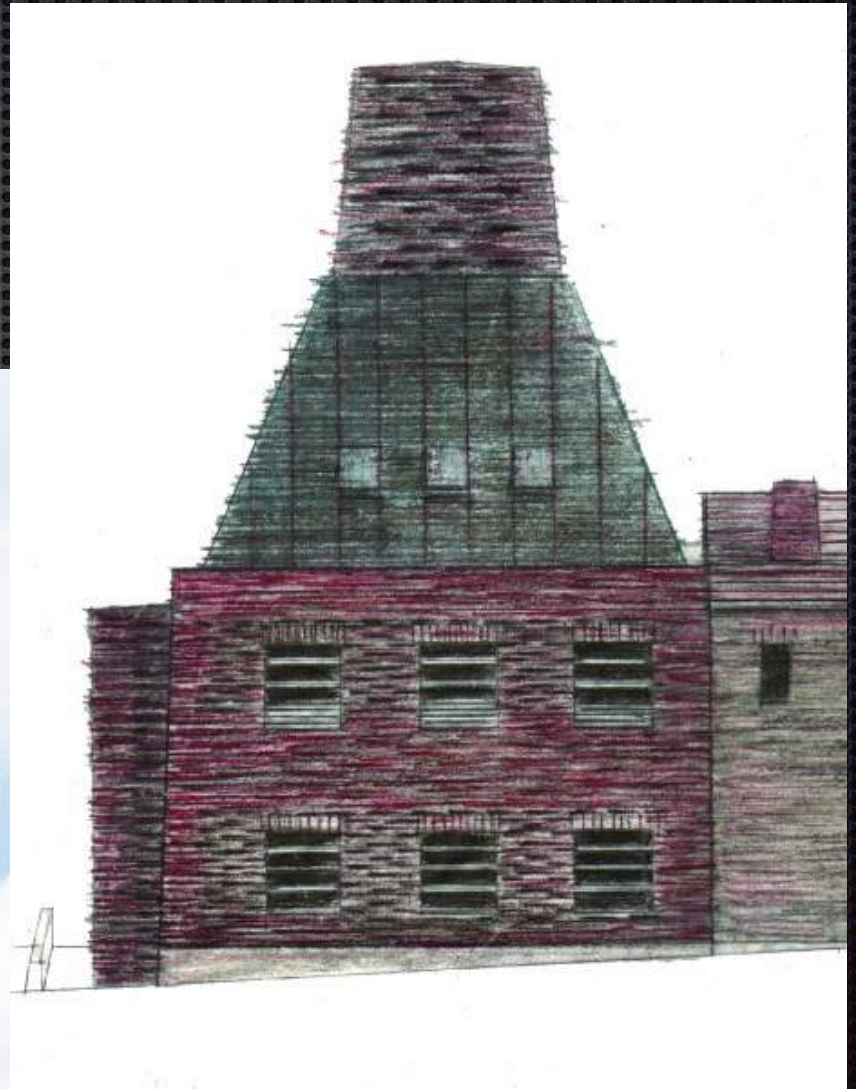


- SUBORDINATE ART (applied decoration)



- Traditional Korean building

- SUBORDINATE ART (applied decoration)



- Porcelaneum Herend 1998.
- Gábor TURÁNYI

- SUBORDINATE ART (applied decoration)



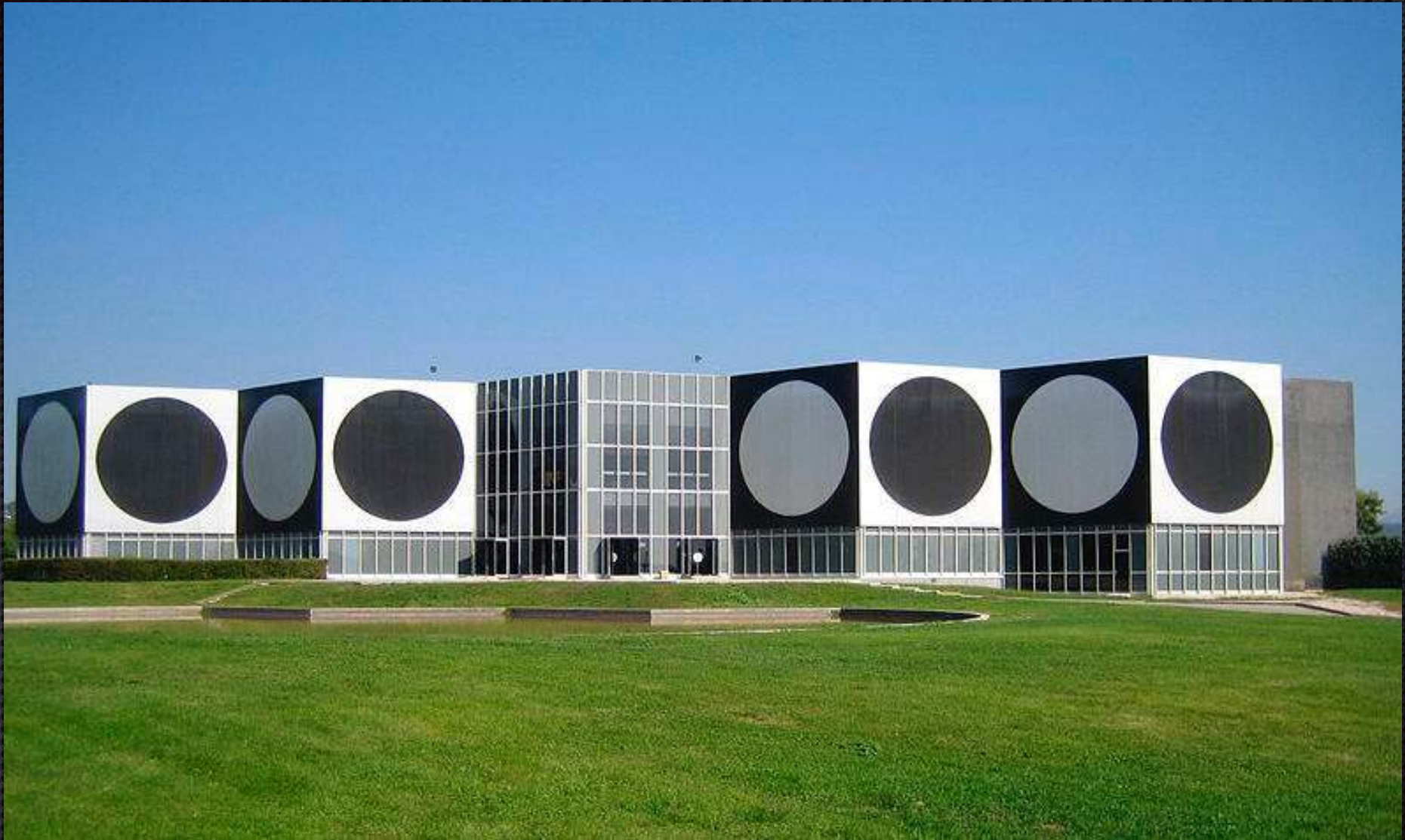
- Piccadilly Circus lighting billboards, London

Rowan MOORE (Guardian):

“Ours is the time when art looks more and more like architecture, and architecture looks quite like art”

- ✦ SYNTHESIS (one cannot exist without the other)
- ✦ SUBORDINATE ART (applied decoration)
- ✦ SUBORDINATE ARCHITECTURE (support)

- SUBORDINATE ARCHITECTURE (support)



- Vasarely Museum, Aix-en-Provence, 1976. - Victor VASARELY

- SUBORDINATE ARCHITECTURE (support)



- Arch of triumphs Thessaloniki (Galerius), 3d C, and Rome (Constantine)

- SUBORDINATE ARCHITECTURE (support)



- La Vilette, Paris, 1982-98. - Bernard TSCHUMI

# HISTORY

## ▪ MESOPOTAMIA



- - glazed bricks around the gates (Ishtar gate) - symbolises power, defends against harms
- - tectonic placement - but not always integrated
- Mesopotamian ceramic reliefs

## ■ ANCIENT EGYPT



- - clean stereometric forms
- - translating of the nature
- - expression of eternity
- - 2d reliefs combined with scripts
- Amon Ra temple, Karnak 15th C BC

## ■ ANCIENT GREECE



- - representation of life
- - Greek sculptures are 2D pics
  - - Doric architecture:
    - - art appears on tectonic neutral surfaces - tympanum = pediment
    - - place is defined by human visibility - frieze and metope
  - - Ionic architecture
    - - tectonic art elements - Chariatida
- Marble figures of tympanum of Parthenon (British Museum)

## ■ ANCIENT ROME



- - reliefs are made of clay (from inside to outside) - industrialised
- - triumphal arch
- - mosaic - stone or glass
- - scene wall in theatre - synthesis of all arts
- Roman theater Orange, France 3rd C.

## ■ ANCIENT ROME

| Part of House:   | Type of Artwork Common:   |
|--|---|
| <u>vestibulum</u> - it is a long, narrow hallway in the Roman home that lead to the main part of the house.  | Often, there were floor mosaics that had messages for the visitor, "welcome" or "beware of the dog". Sometimes there were wall paintings. |
| <u>tablinum</u> - this room had family records, and was a place to display busts of ancestors. It led into the garden.   | The busts of ancestors were here, along with detailed wall paintings and a floor mosaic.  |
| <u>atrium</u> -it is a room where, during a party, guests would be met by the host. It has a shallow pool (to collect rainwater) and a large space in the roof for air to come in. | There were often colorful wall paintings. Some depicted cupids or gods and goddesses.   |
| <u>peristylum</u> - Romans had an open courtyard <i>in</i> their house. Here, there was a garden, and sometimes even fish ponds.   | Sculptures, detailed wall paintings, and sometimes fountains (if they did have fish ponds).   |

- - mosaic - stone or glass
- - wall paintings
- Roman villa mosaic, Sicily 2nd C.



## ▪ MIDDLE AGES

- - mixture of Roman art and tradition of immigrating people
- - wall paintings of catacombs
- - church = house of our Lord cannot ever empty - figures are needed
- - mosaics - expression of endlessness
- - wall paintings
  - - al secco
  - - al fresco
- - tapestries
- - painted (stained) glass windows

▪ Sainte Chapelle Paris, 13th C



## ■ RENAISSANCE

- - based on humanism and antic arts
- - “perfect system of proportions” L.B. ALBERTI
- - perspective presentation
- - bronze gates
- - vital sculptures



- Porta Paradiso, Battisterio
- Florence, L. GHIBERTI 15th C

## ▪ BAROQUE



- - style of powerful Catholic church
- - motives push in deep into spaces
- - porcelain - like decoration

▪ Fontana di Trevi, Rome, 18th C.,

Peterskirche Vienna, 18th C

## ▪ ROMANTIC ARCHITECTURE



- - outside: art is replaced by commercial products, fake imitations
- - inside: wall paintings, stained glass, valuable interiors, furniture
- Atlas figures on facade, Paris

- ART NOUVEAU (Secession)



- - aspiration to harmony in and out
  - - symbols of nature
  - - glazed ceramic
  - - craft, applied art elements
- 
- Metro stations, Paris,
  - Hector GUIMARD



## ▪ ART NOUVEAU (Secession)



Henry van de Velde, 1902

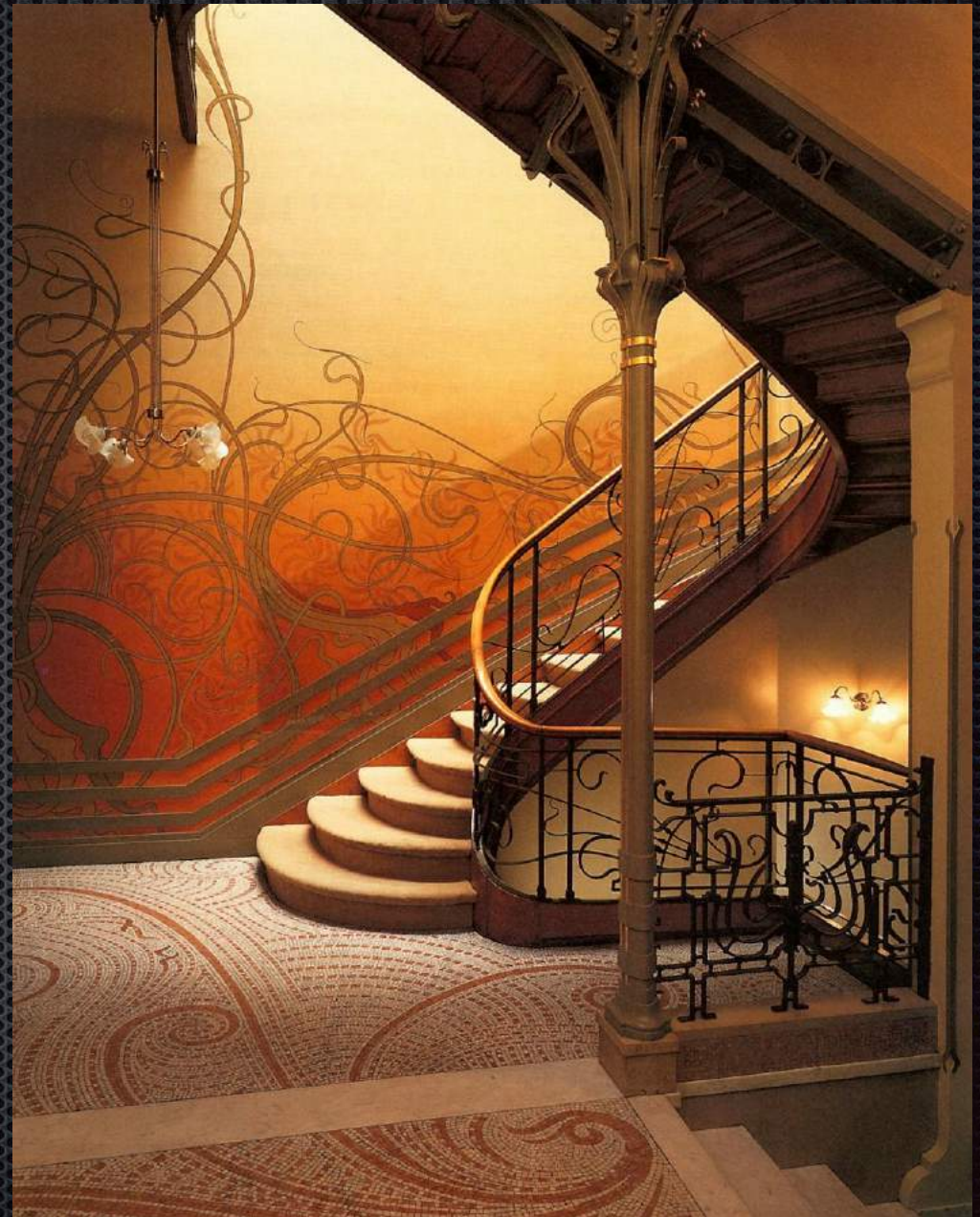
- - aspiration to harmony in and out
  - - symbols of nature
  - - glazed ceramic
  - - craft, applied art elements
- 
- Craft of Belgium
  - Henry van de VELDE, Victor HORTA



## ■ ART NOUVEAU (Secession)



- - aspiration to harmony in and out
  - - symbols of nature
  - - glazed ceramic
  - - craft, applied art elements
- 
- Residence in Brussels
  - Victor HORTA



## ■ ART NOUVEAU (Secession)

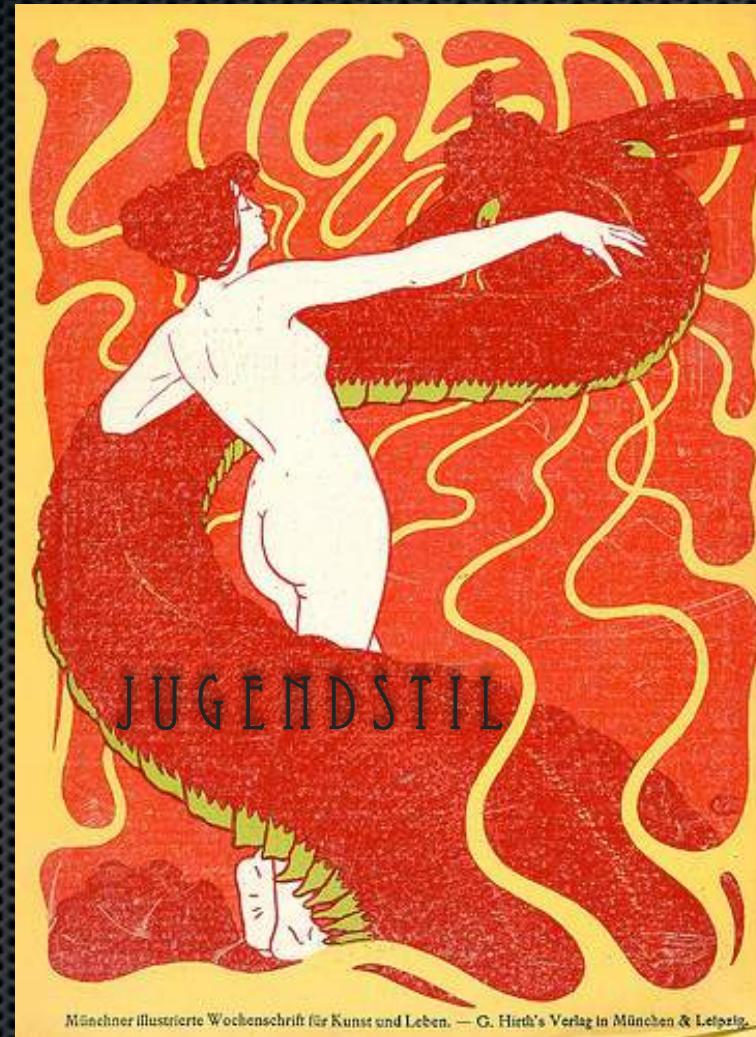


- - aspiration to harmony in and out
- - symbols of nature
- - glazed ceramic
- - craft, applied art elements
- Secession, Vienna 1898. J. M. Olbrich





# ART NOUVEAU (Secession) in Europe



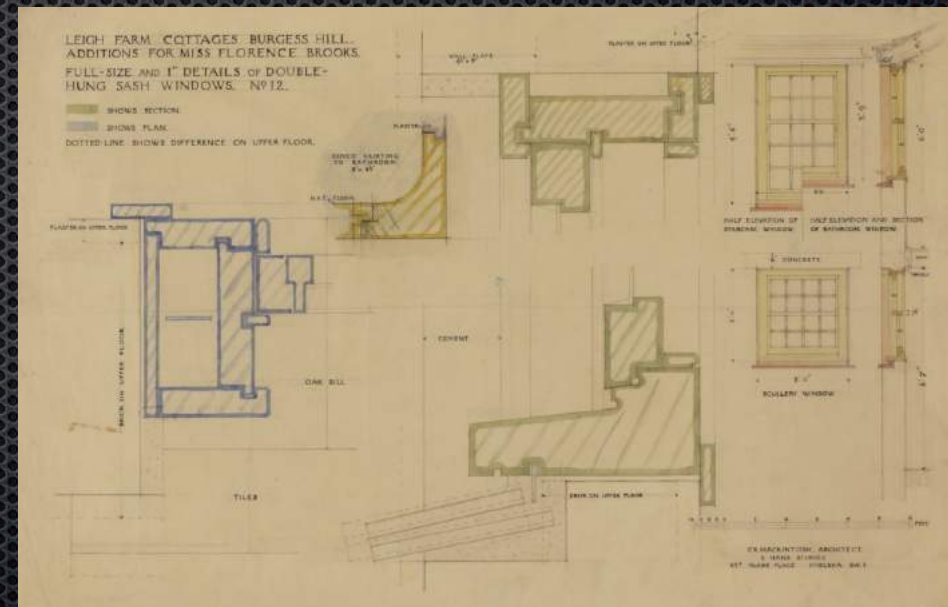
## ■ ART NOUVEAU (Secession) in Hungary



- Museum of Applied Arts, Budapest
- Ödön LECHNER 1893.

## ■ ART NOUVEAU - ART DECO

- - aspiration to harmony in and out
- - glazed ceramic
- - craft, applied art elements
- Shop in Glasgow
- Charles Rennie MACKINTOSH 1868-1928



## ▪ MODERN



- - applied art only in very special case
- - sophisticated, artistic detail and interior design
- German pavilion, Barcelona, 1928. - M. v.d. ROHE
  - Armchair and vase of Alvar AALTO



## MODERN



- Ludwigshafen
- Madrid
- Joan Miro wall decorations



## ❖ WARNING!! KITSCH!!



- ❖ - out of human scale
- ❖ - lack of aesthetic value
- ❖ - analogy instead of allegory
- ❖ - temporary....
- ❖ Communist and Nazi monuments



## ❖ POSTMODERN



- ❖ - no rules
- ❖ - several frumpish creation
- ❖ HUNDERTWASSER Houses, Vienna

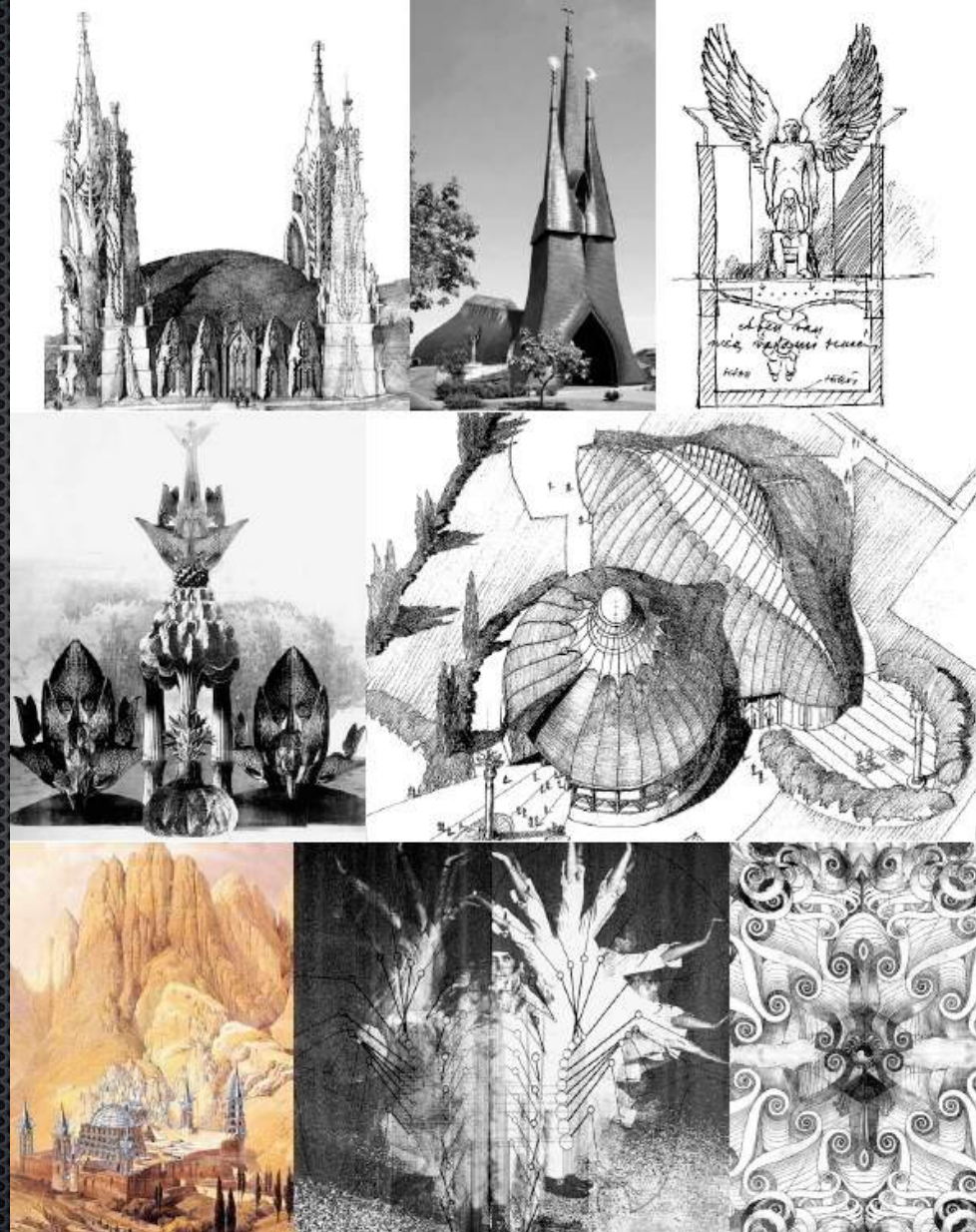


## ▪ ORGANIC ARCHITECTURE - HUNGARY

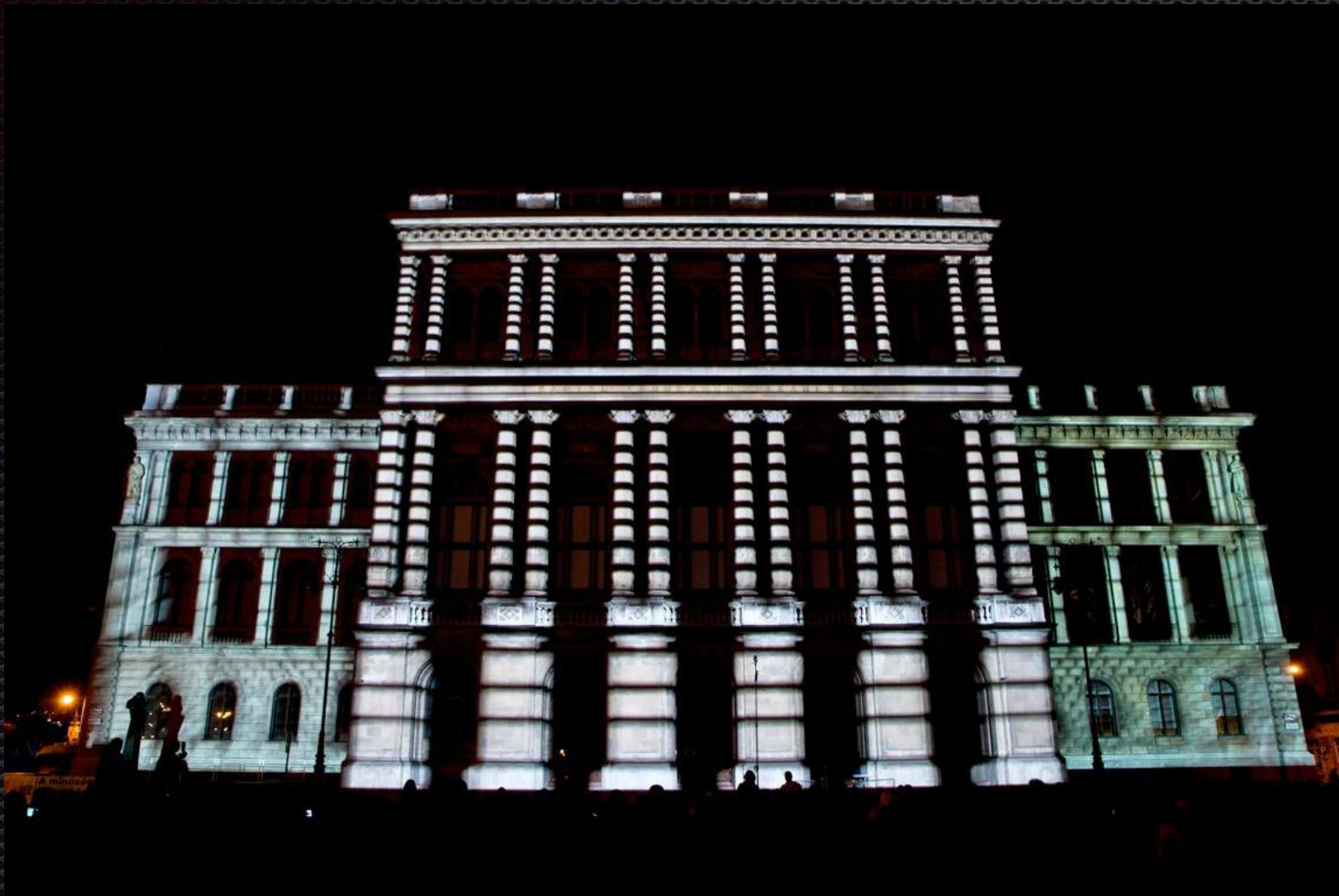


- - symbols of nature
- - humanist symbols
- - non-tectonic, formal structures

▪ MAKOVECZ IMRE 1935-2011.

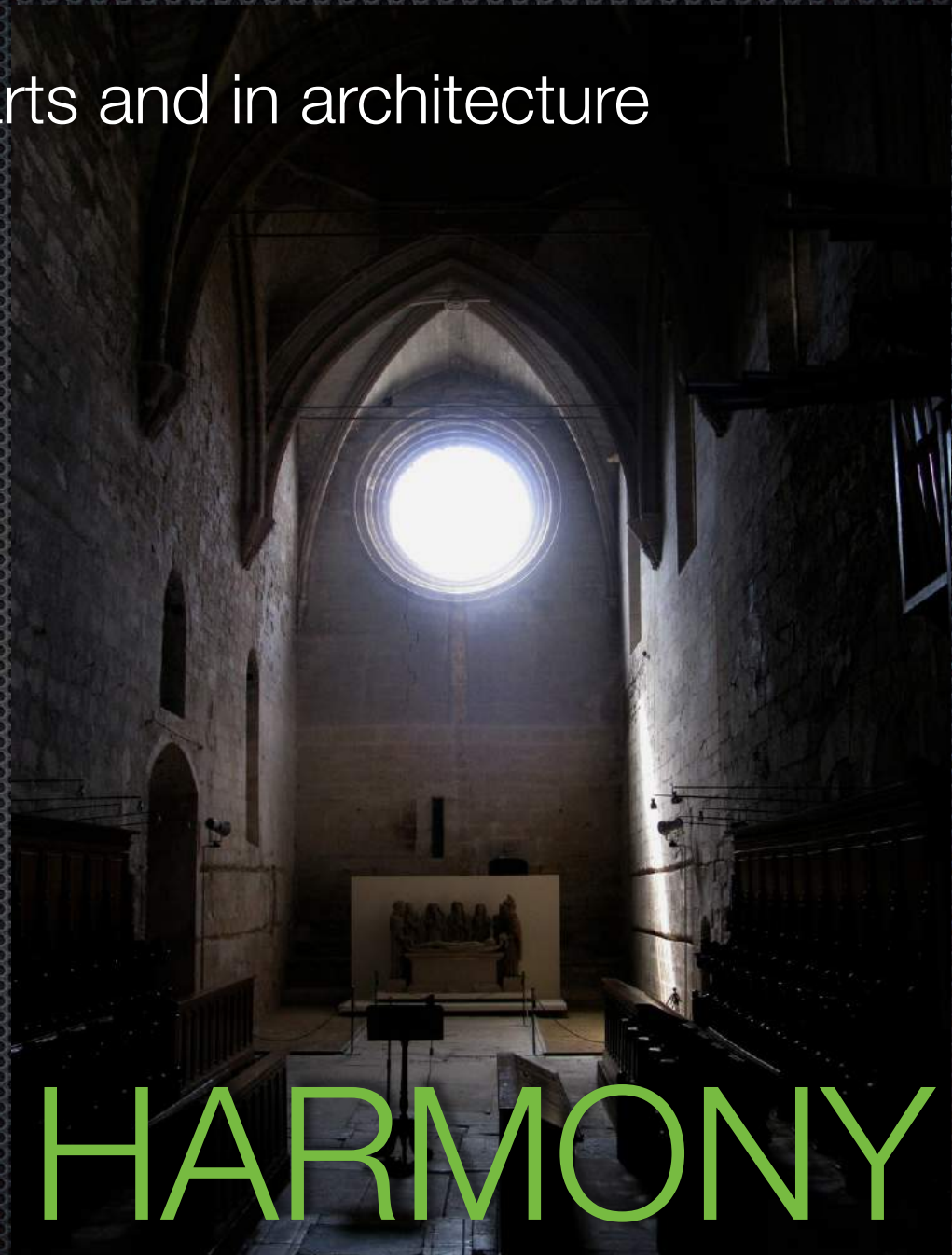


## ✦ NEW TRENDS, NEW CHANCES



- ✦ - videomapping BORDOS ARTWORKS
- ✦ - “architainment”
- ✦ - 3D mapping

- ✦ Common elements in arts and in architecture
  - ✦ - scale (relativity)
  - ✦ - proportions
  - ✦ - rhythm
  - ✦ - form
  - ✦ - composition
  - ✦ - colours
  - ✦ - lights



# HARMONY

Quote for today:

“The mother art is architecture. Without an architecture of our own we have no soul of our own civilisation”

Frank Lloyd WRIGHT (1867-1959)