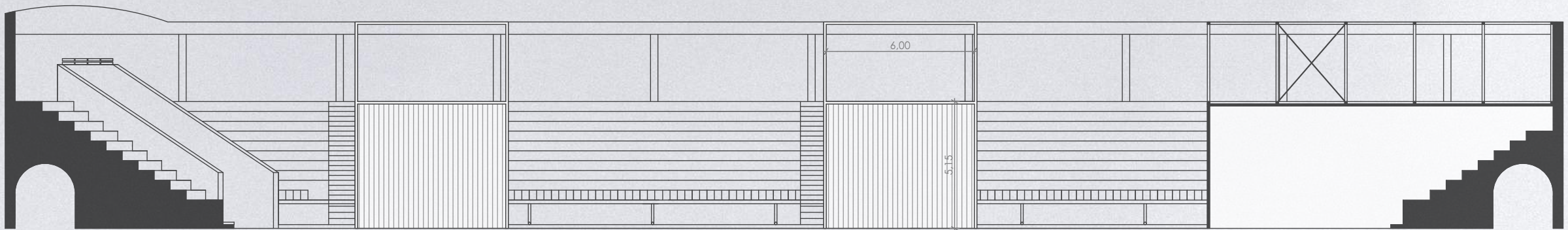
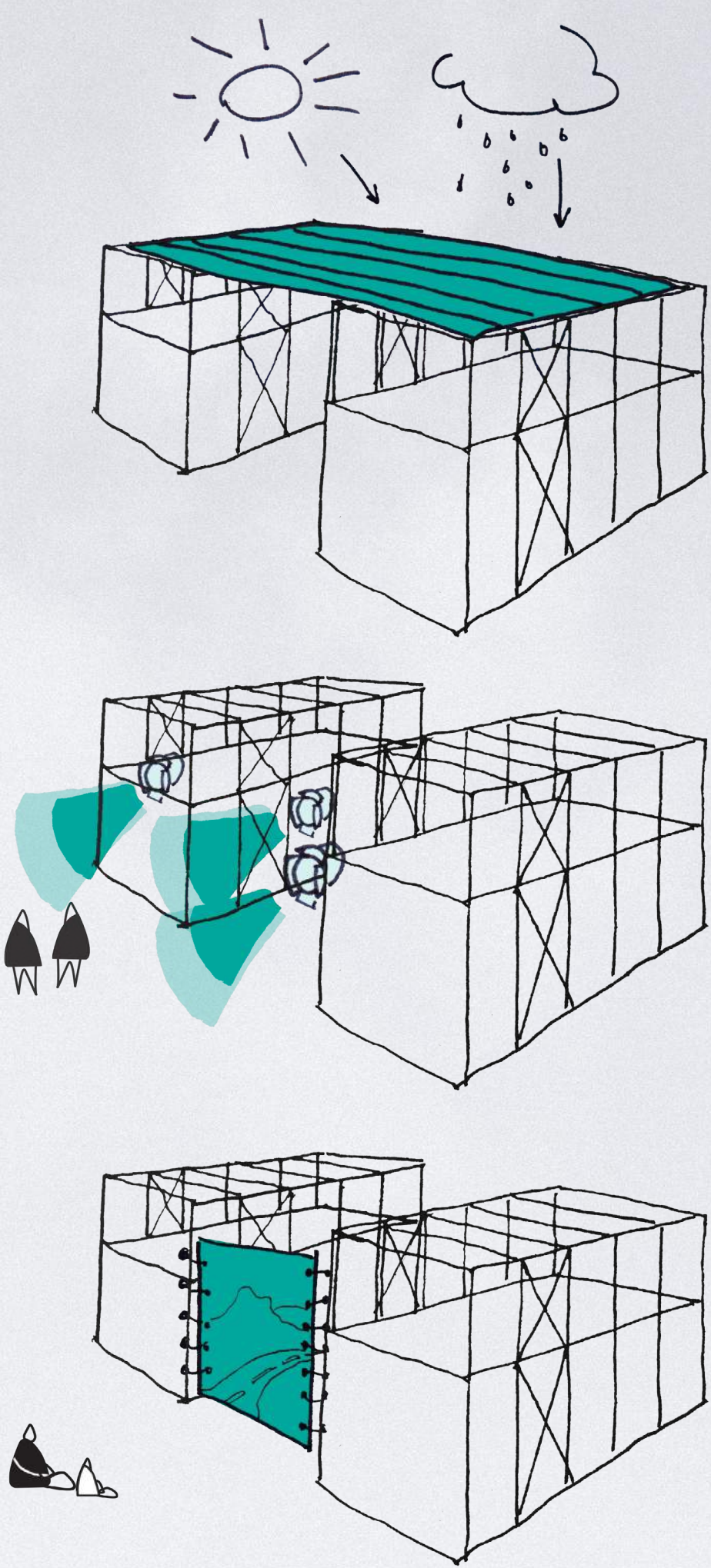
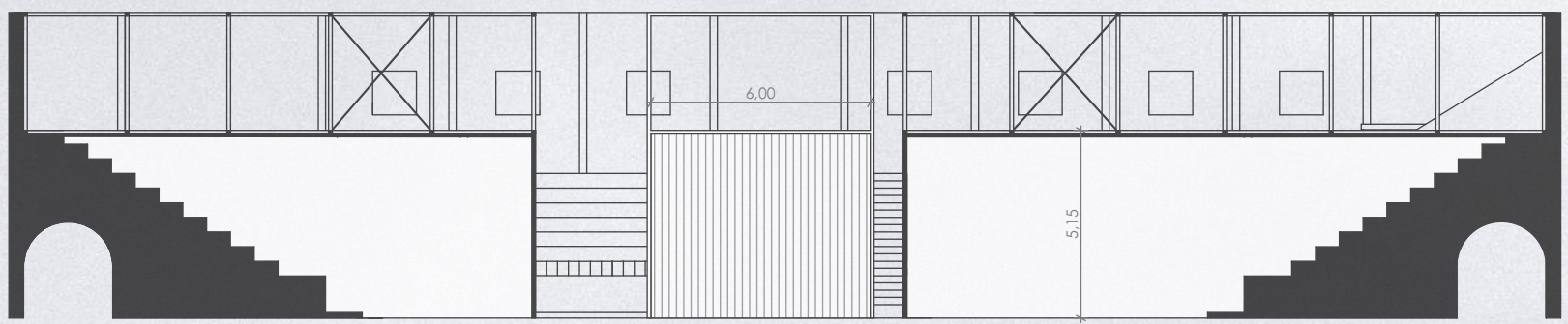




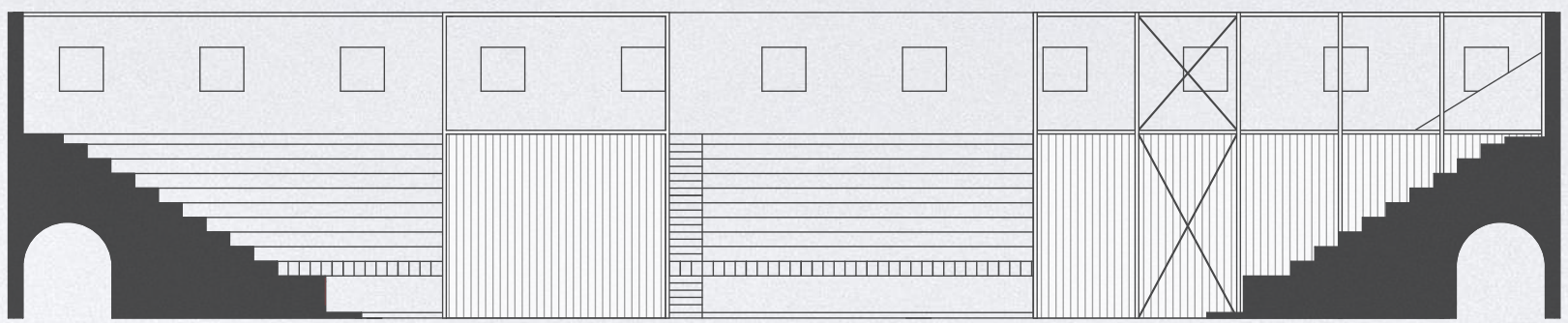
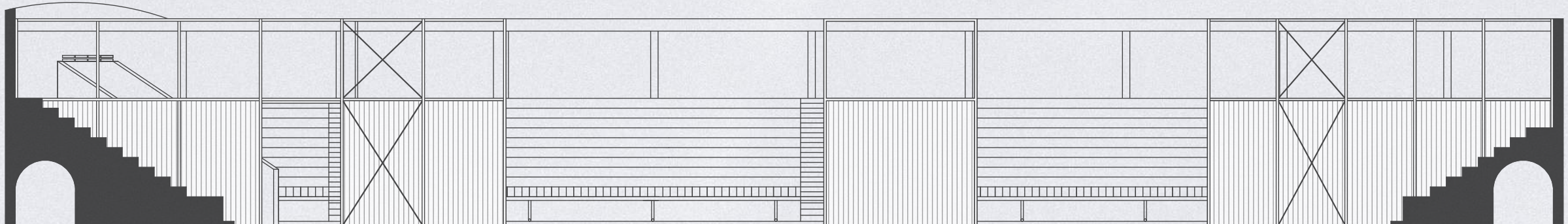
SITE PLAN 1:1000



A-A SECTION 1:200



B-B SECTION 1:200

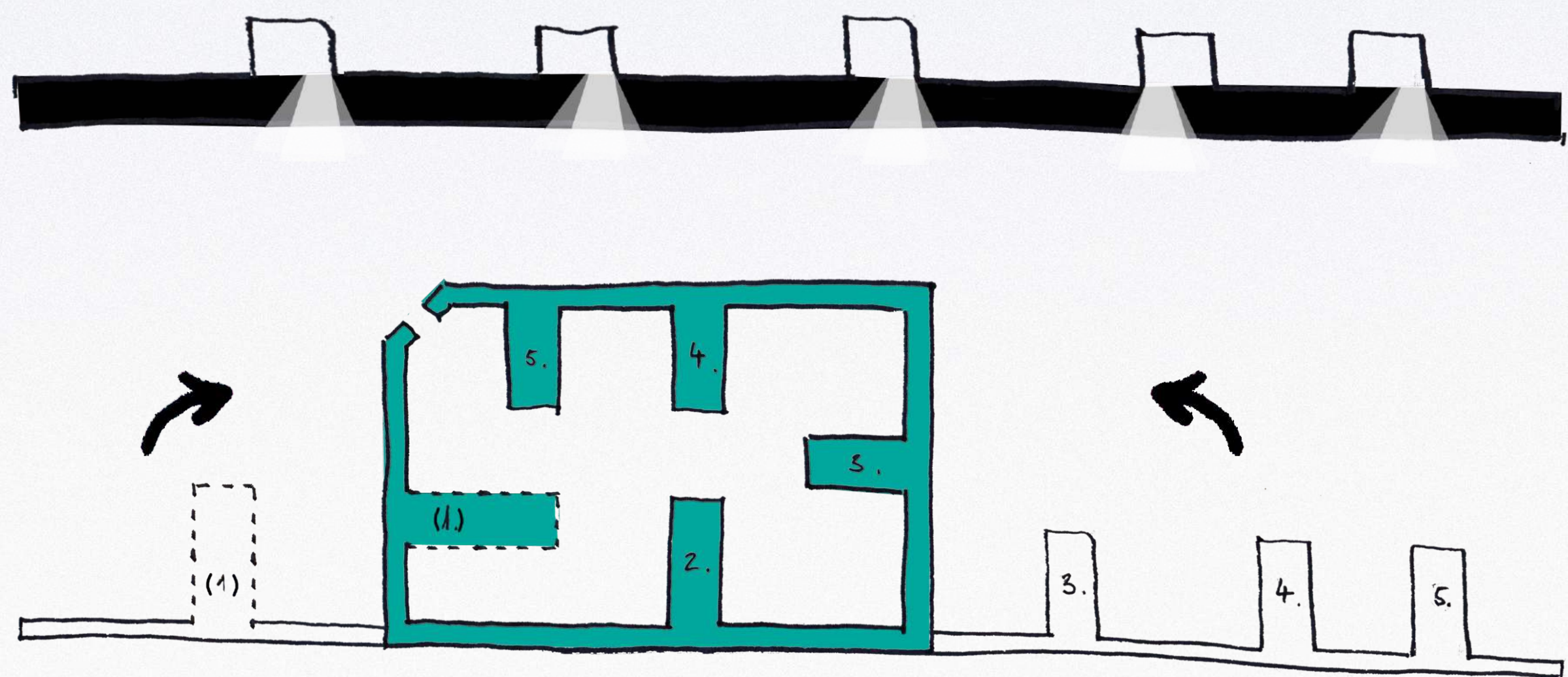


ELEVATIONS 1:200

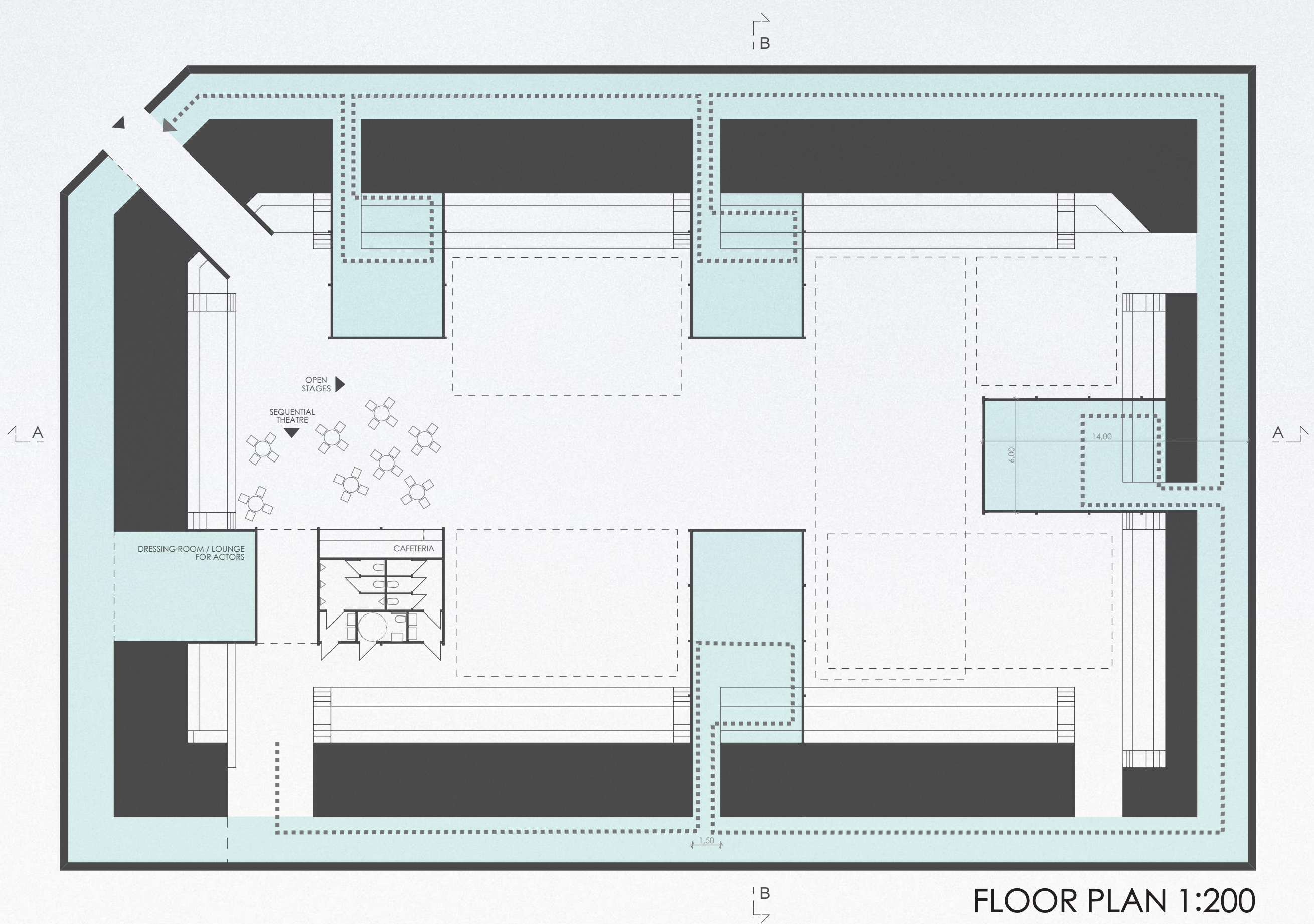
10th OISTAT Theatre Architecture Competition

THREADED THEATRE

PUBLIC ACTIVITY CENTER, HSINCHU



In the proposal for the transformation of the Hsinchu Public Activity Center into a theater festival area, the tunnel located underneath the grandstand plays a key role. The concept is based on the idea of the medieval theater type, where the audience is moving through a sequence of scenes. This interpretation is achieved by the placement of closed theater boxes, situated along the tunnel. It was the ambition of the arrangement to establish appropriate theatre space not only in the inside, but also structure the external area and hence create different flexible stages. Accordingly, there are two types of performances.



FLOOR PLAN 1:200

On one hand they are taking place inside the boxes - these plays consist of a sequence of settings, where the audience keeps moving from scene to scene. By entering the dark tunnel, the visitor is leaving the rushing city and passing into a different world. The light coming in through the boxes is guiding the audience to the next scene. Bigger performances are located on the outside stages, which can be flexibly arranged to the necessary size by movable elements. Due to the temporary character of the festival, the transformation of the given structure is reduced to the minimum.

