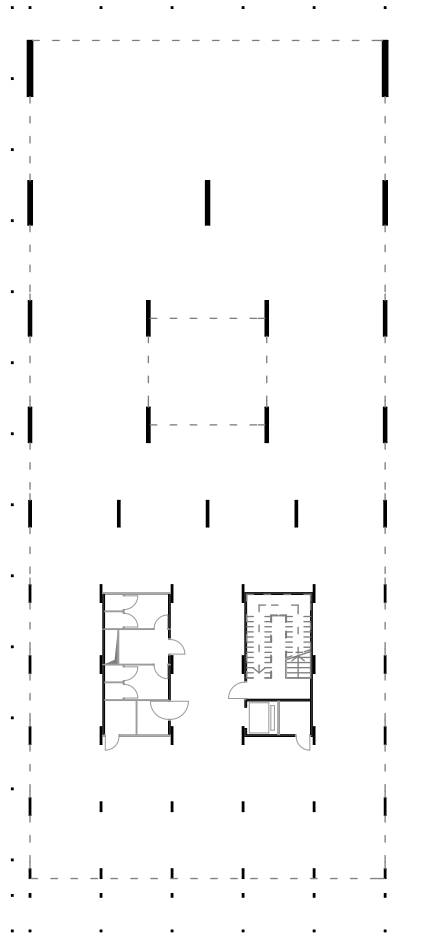


RÉSZLETKÉPZÉS ÉS KOMPOZÍCIÓ
Egy szerkezeti rendszer fejlődése

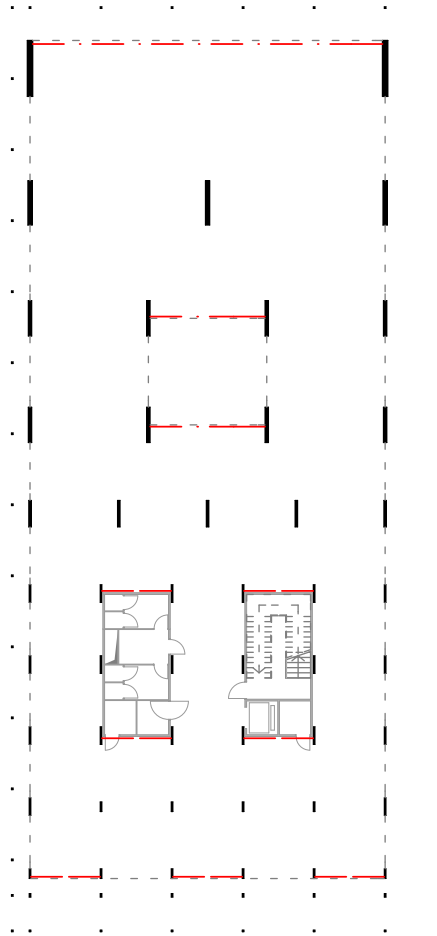
Grócz Bence
Alphouse, Traunstein, Németország



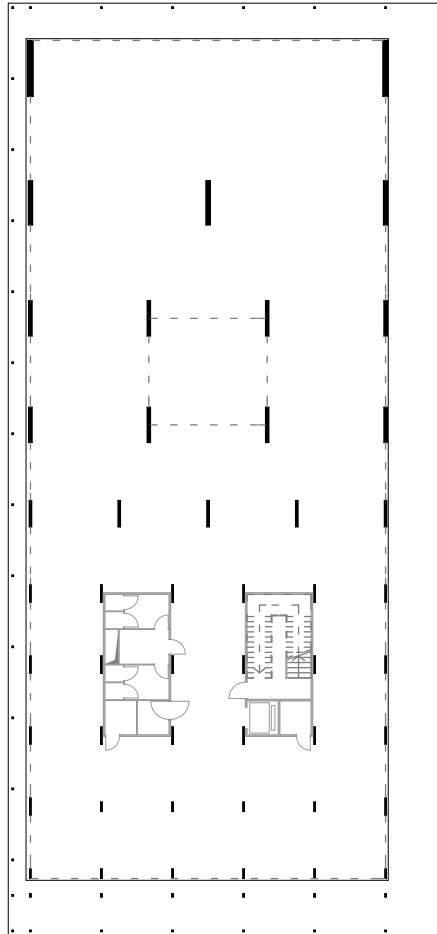
komplex 1
merezítés problémája



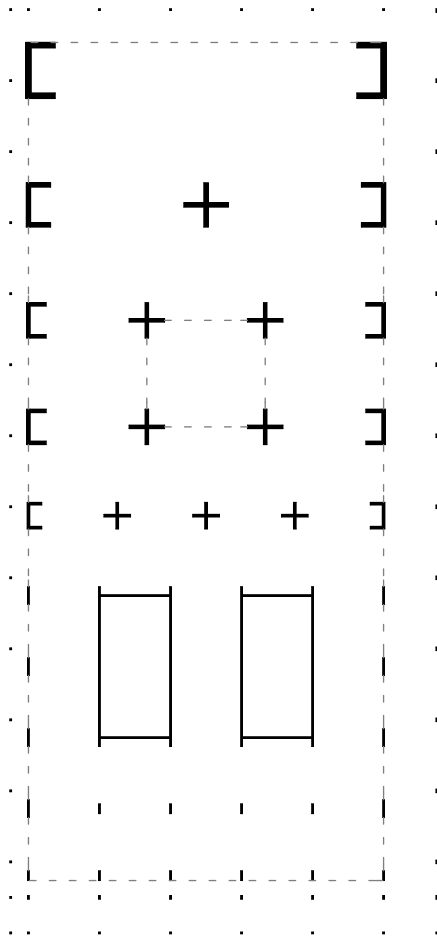
komplex 1
Alphouse



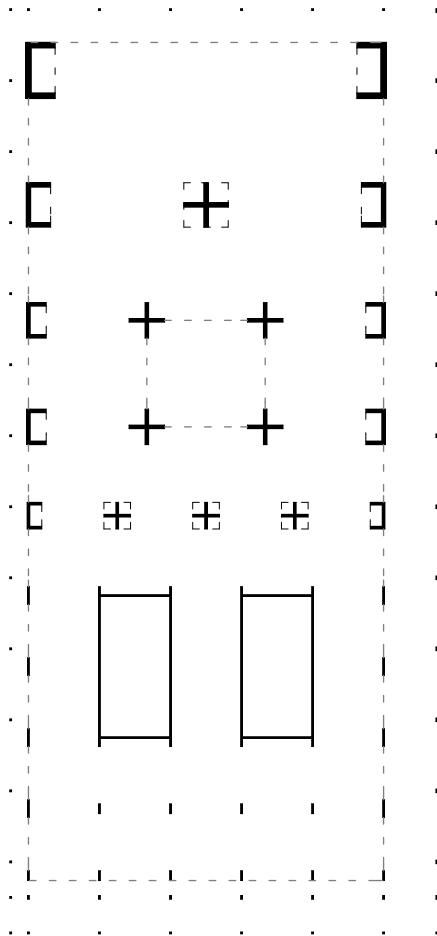
mervítés
András kereszték



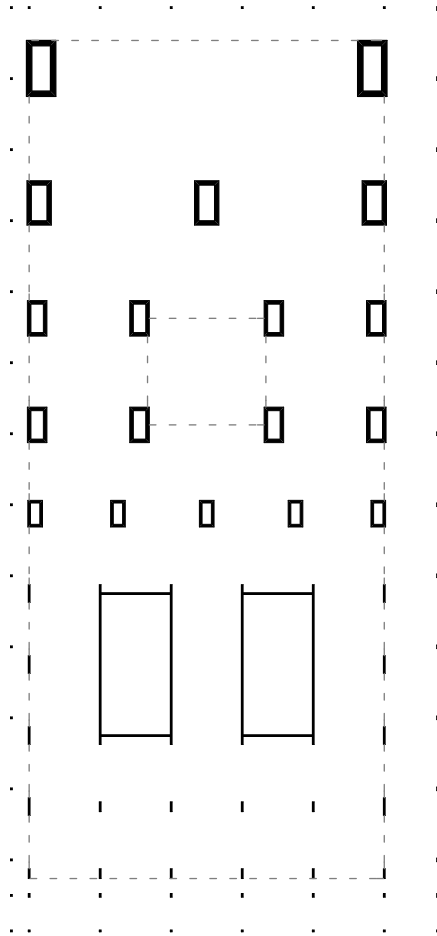
mervítés
terasz, mint beton merevítő lemez



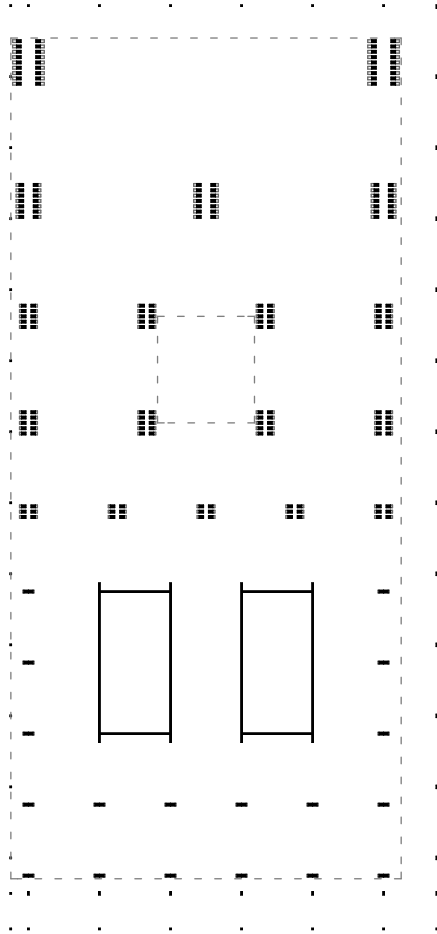
mervítés
keresztbe fordított falpillérek



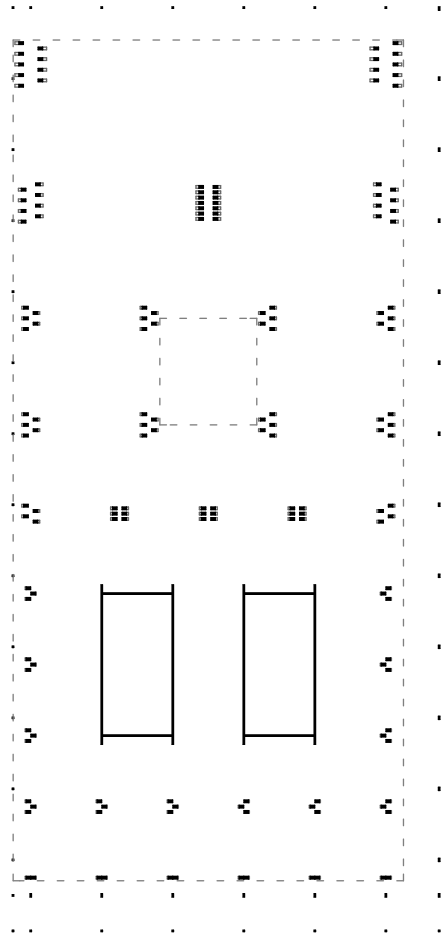
mrevítés
gépészeti dobozok



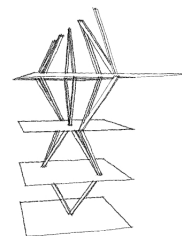
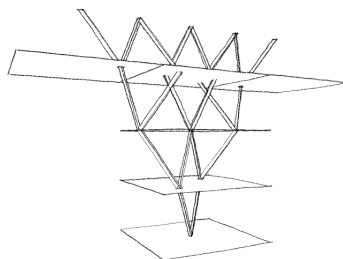
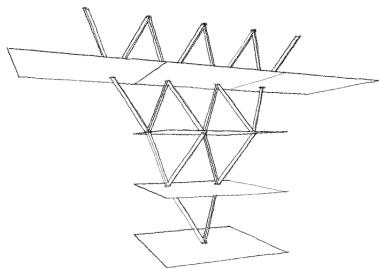
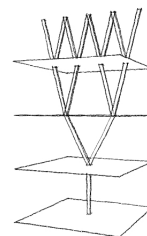
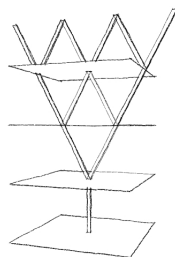
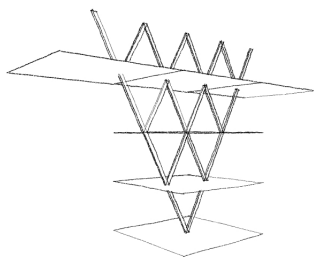
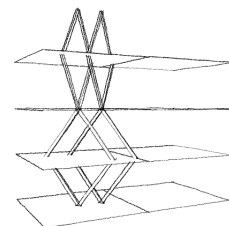
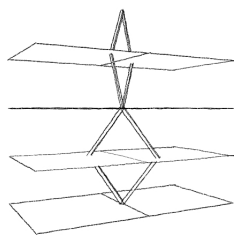
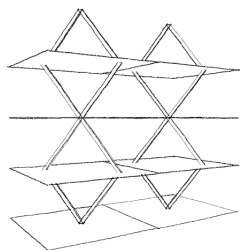
faltömbök
gépészeti dobozok



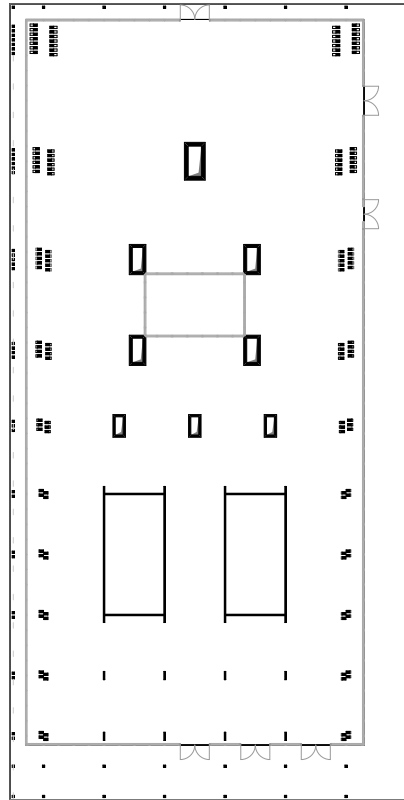
mrevítés
háromcsuklós tartók variációi



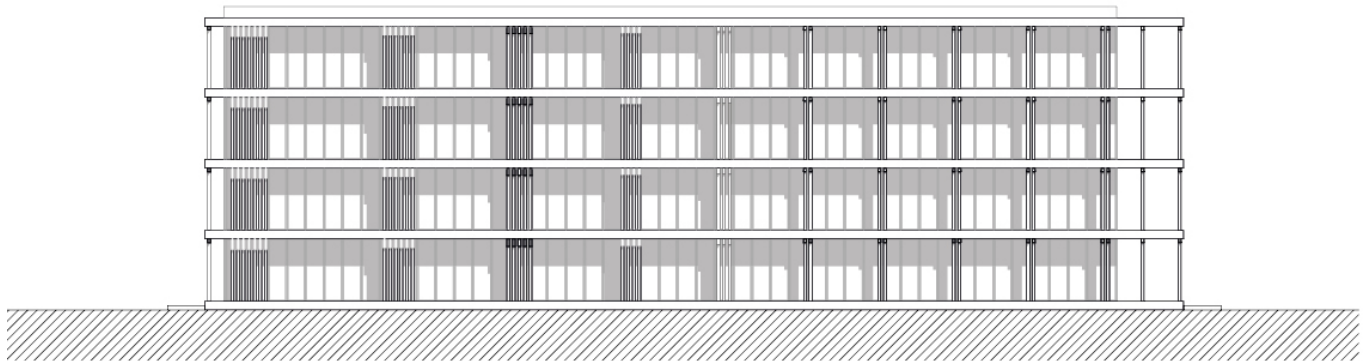
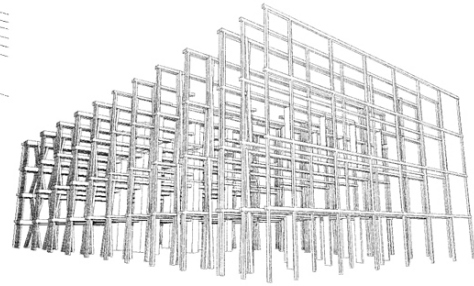
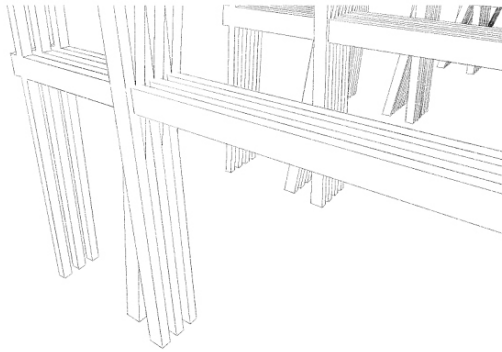
mervítés
háromcsuklós tartók variációi



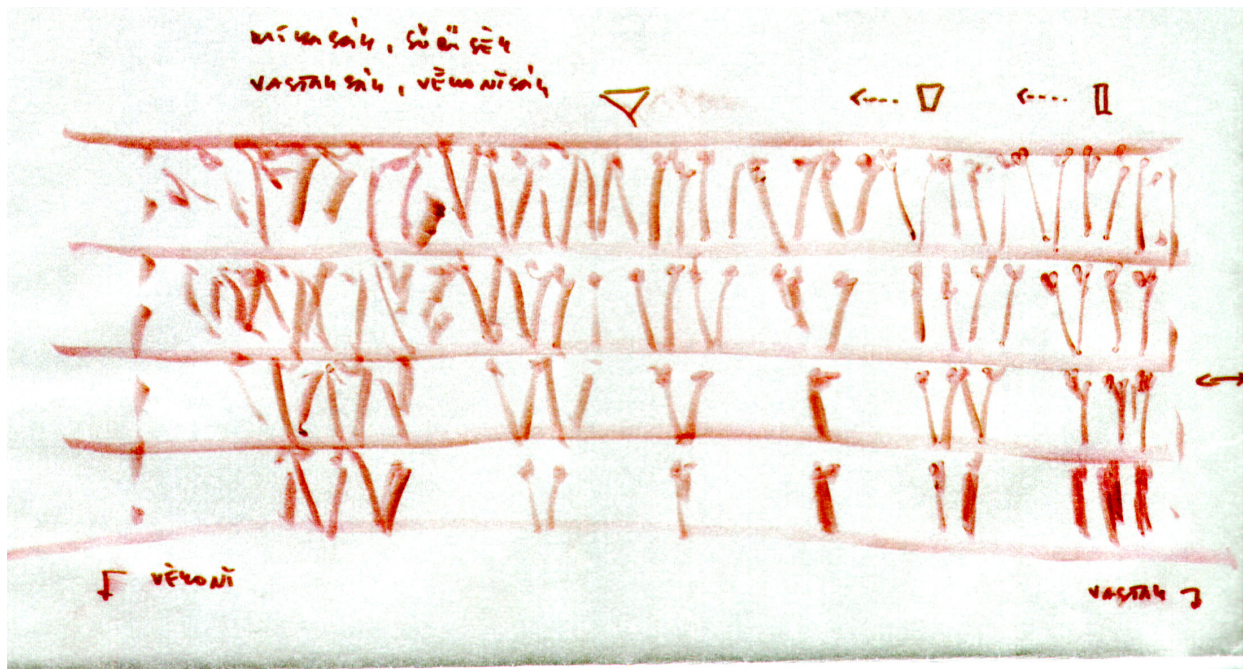
homlokzat
háromcsuklós tartók variációi



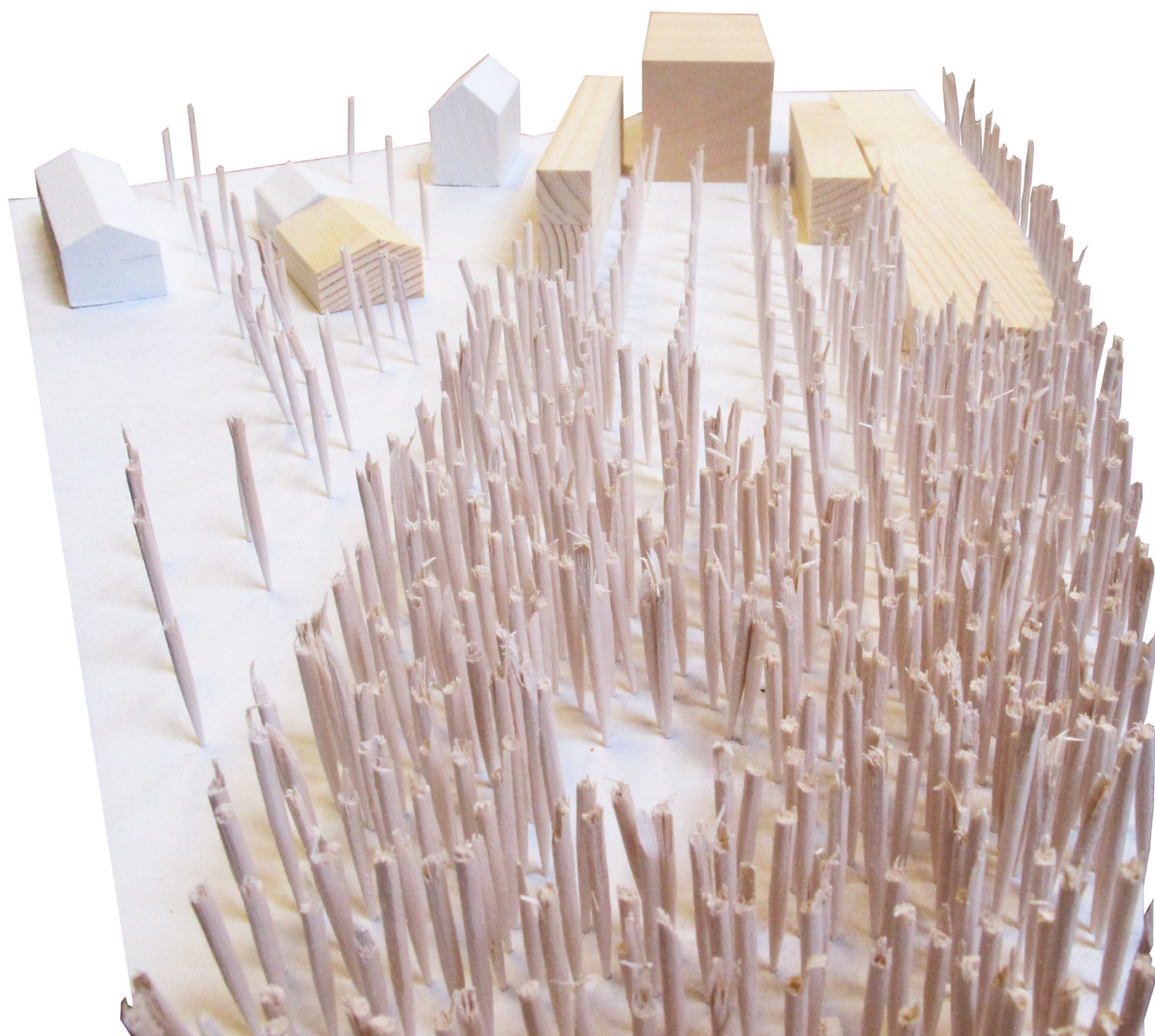
”kétarcú” rendszer
háromcsuklós tartók és dobozok



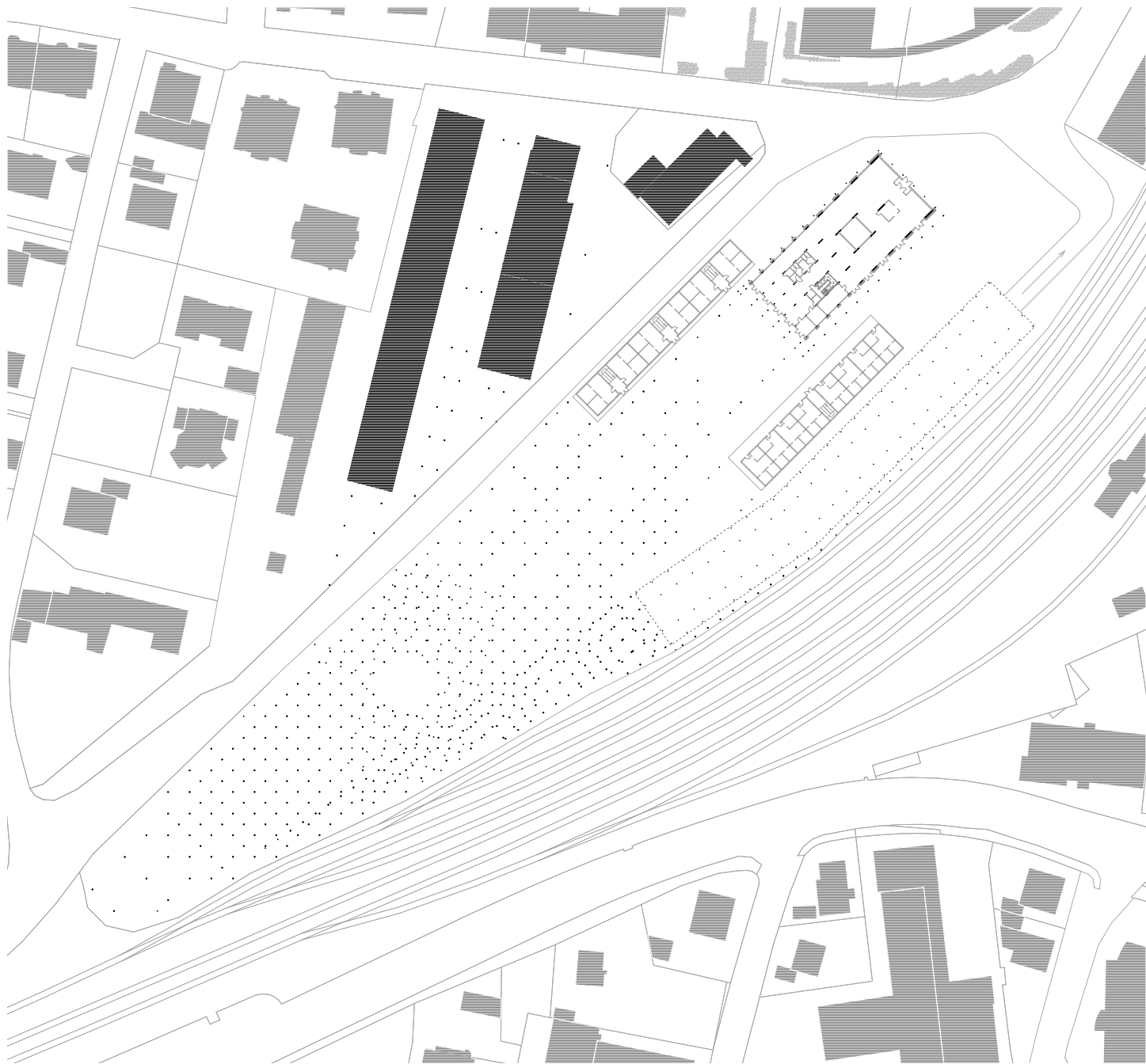
„kétarcú” rendszer
de a ház is kétarcú!



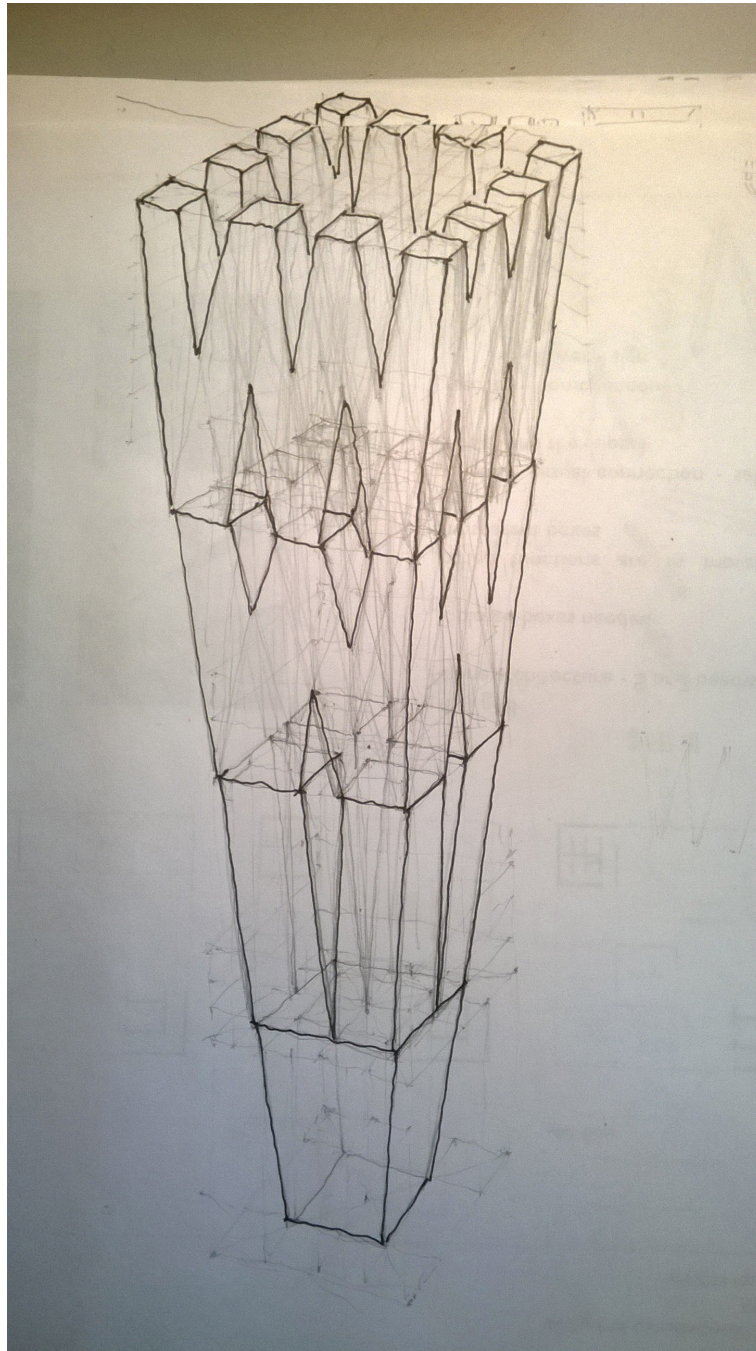
vágy
mindegyik homlokzat legyen „erdő”



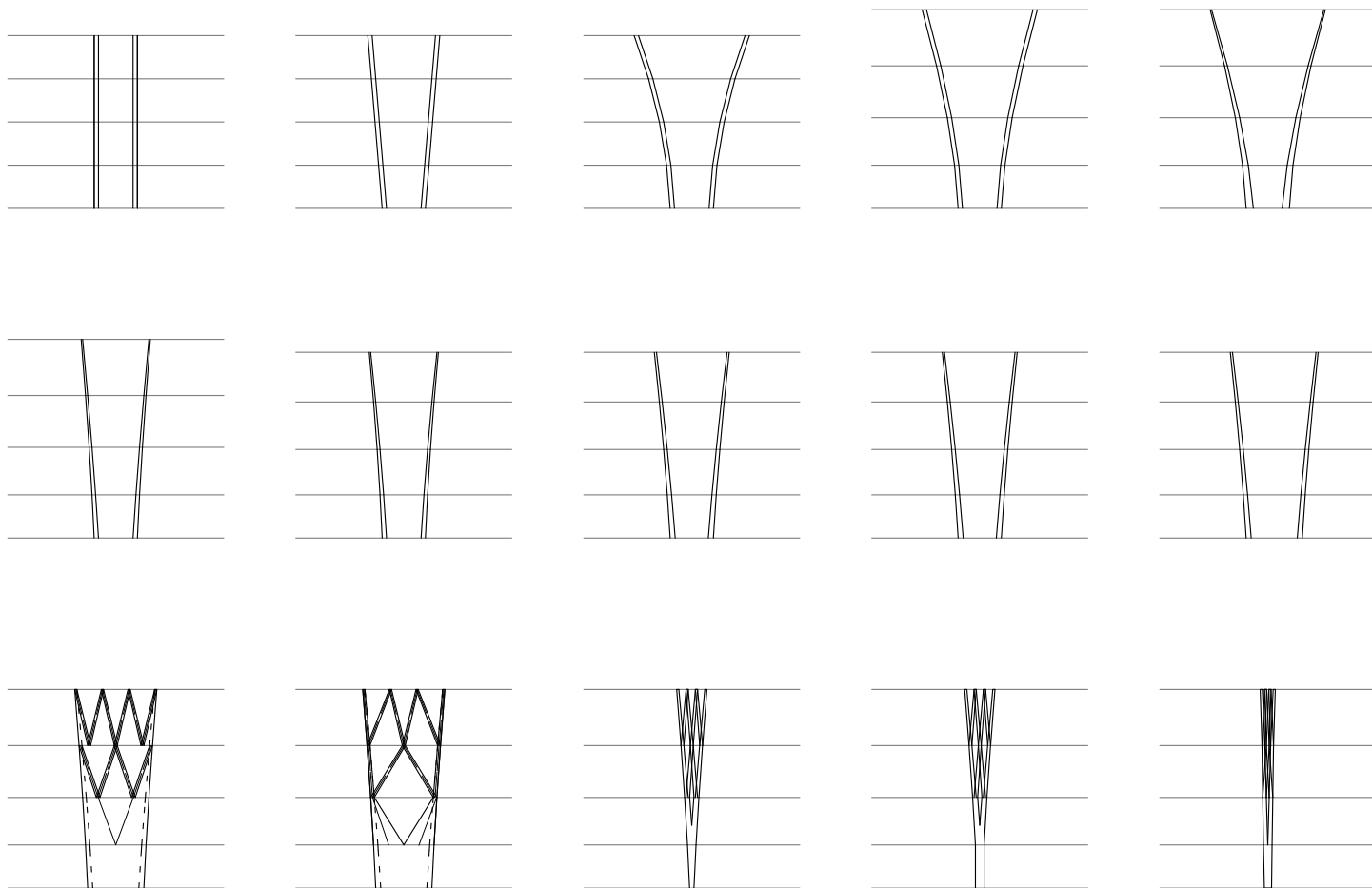
vizsgálat
visszazoomolás helyszínrajzi szintre



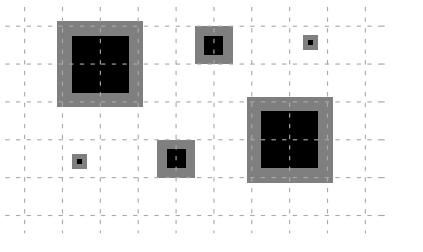
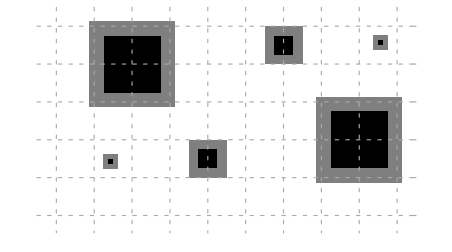
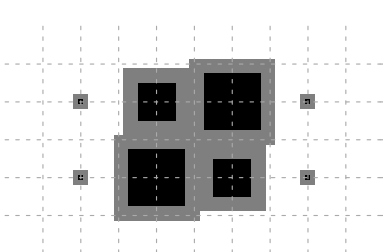
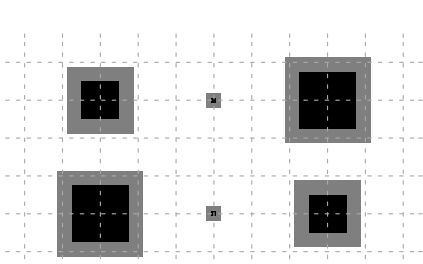
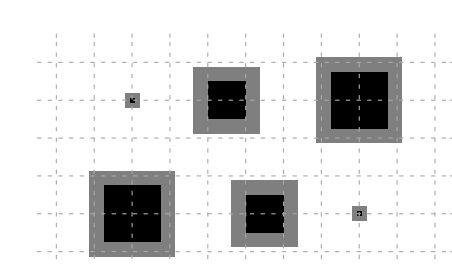
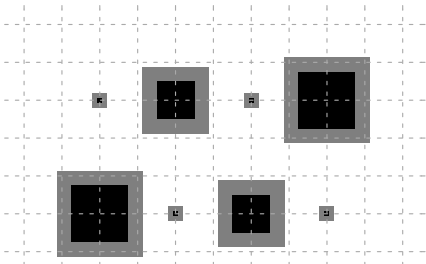
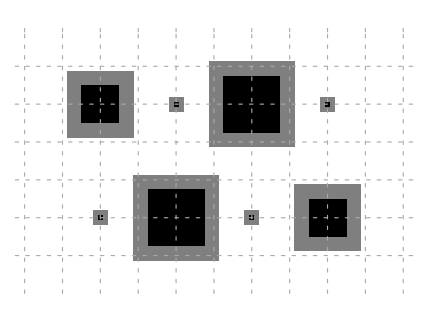
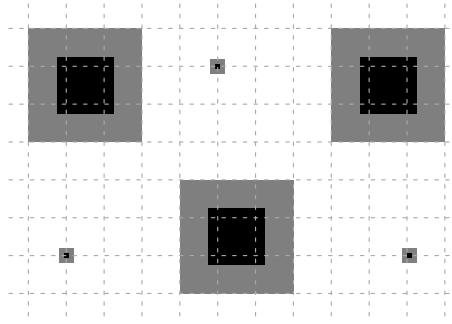
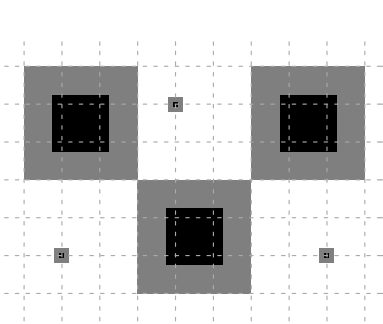
a vizsgálat eredménye
a házon belüli lineáris sűrűsödés már nem fontos



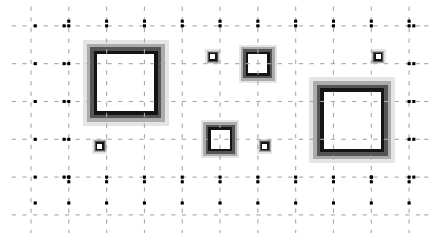
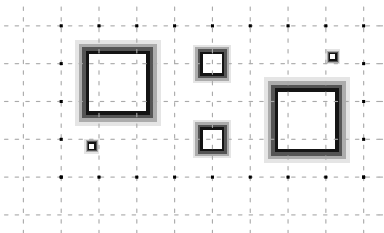
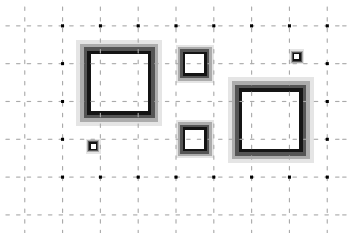
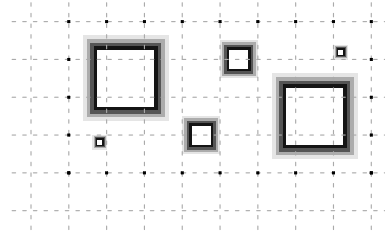
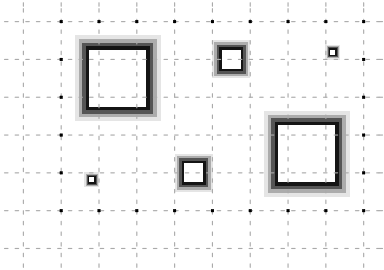
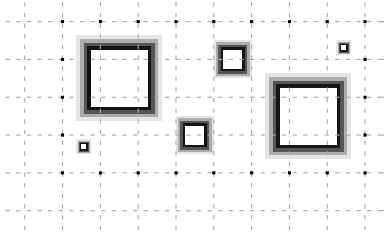
kéve
„egyarcú” tartószerkezeti rendszer



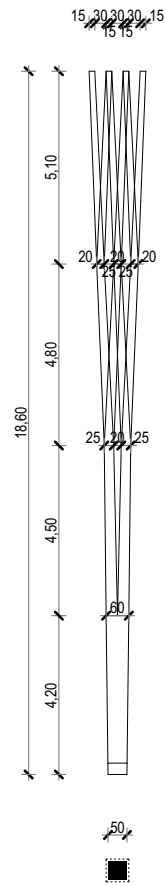
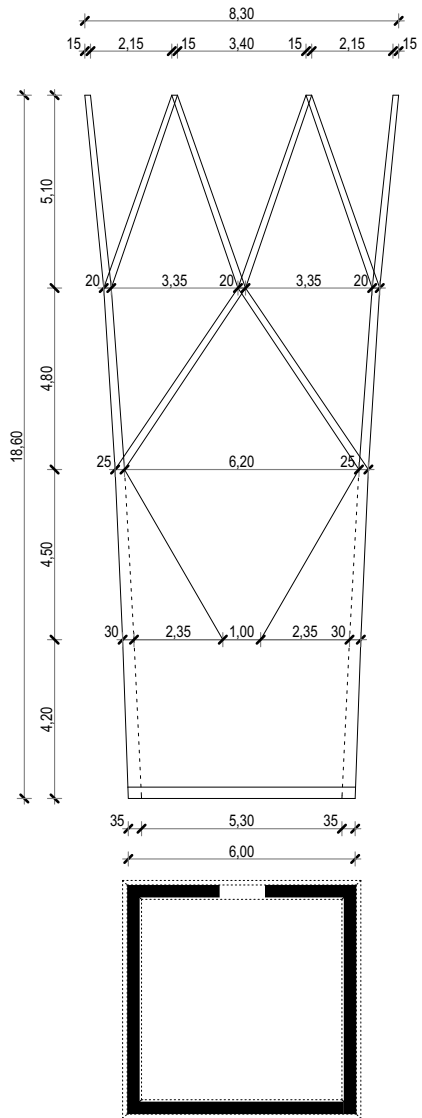
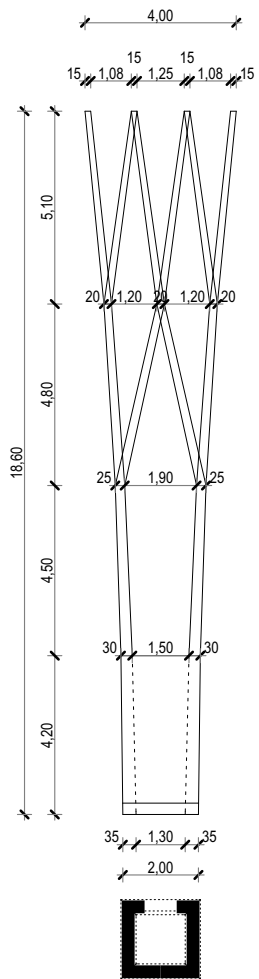
kéve variációk
egyenes / íves / konstans / vékonyódó



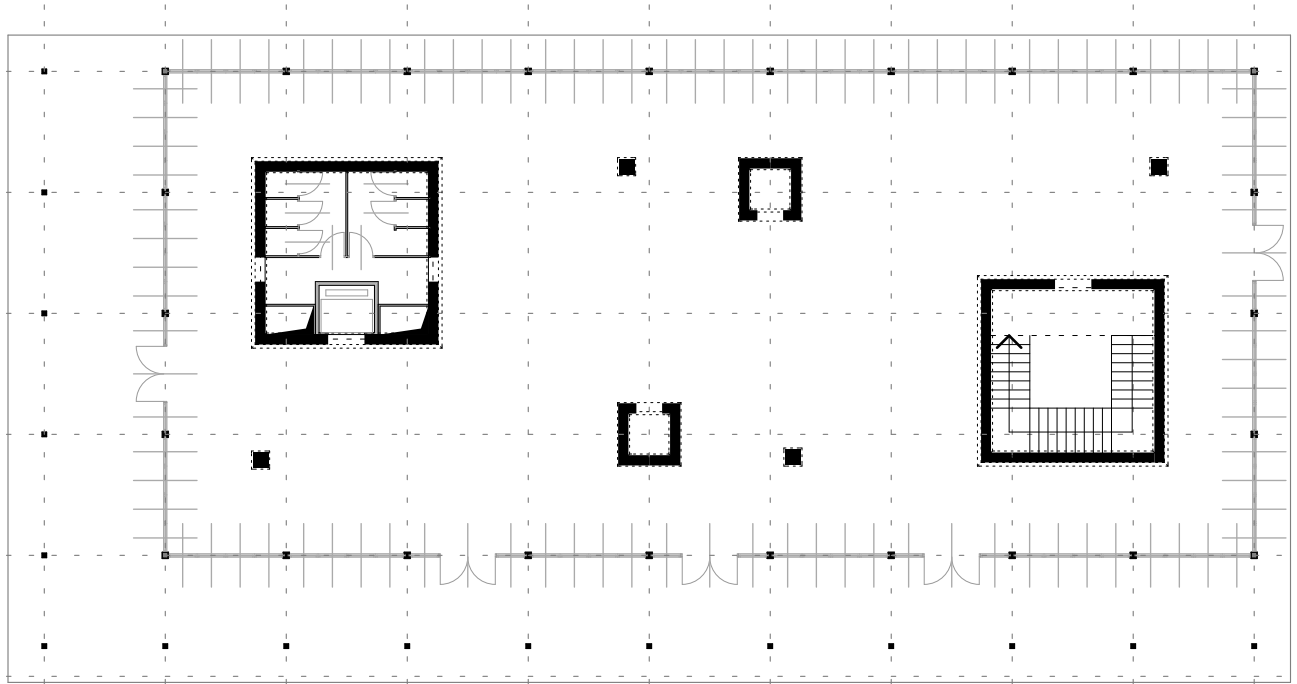
kévek mérete, elhelyezése
funkció újra elhelyezése



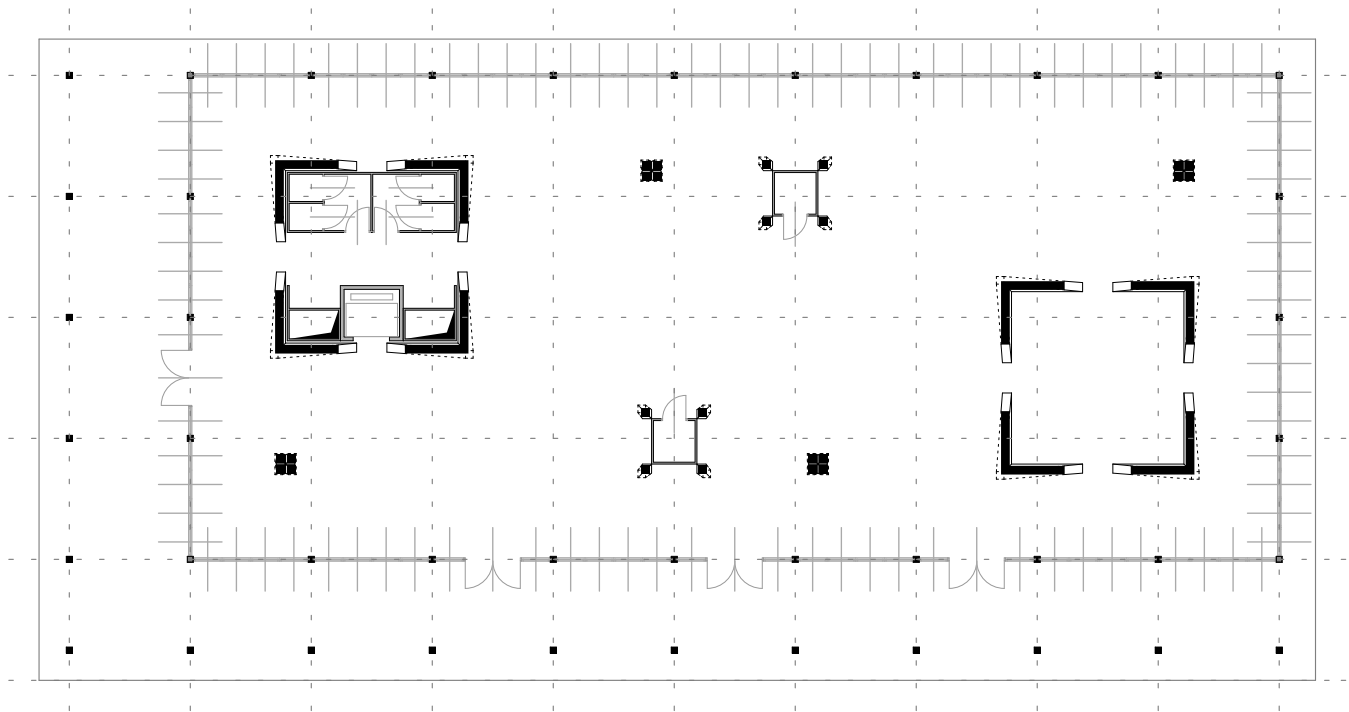
kévek mérete, elhelyezése
funkció újra elhelyezése



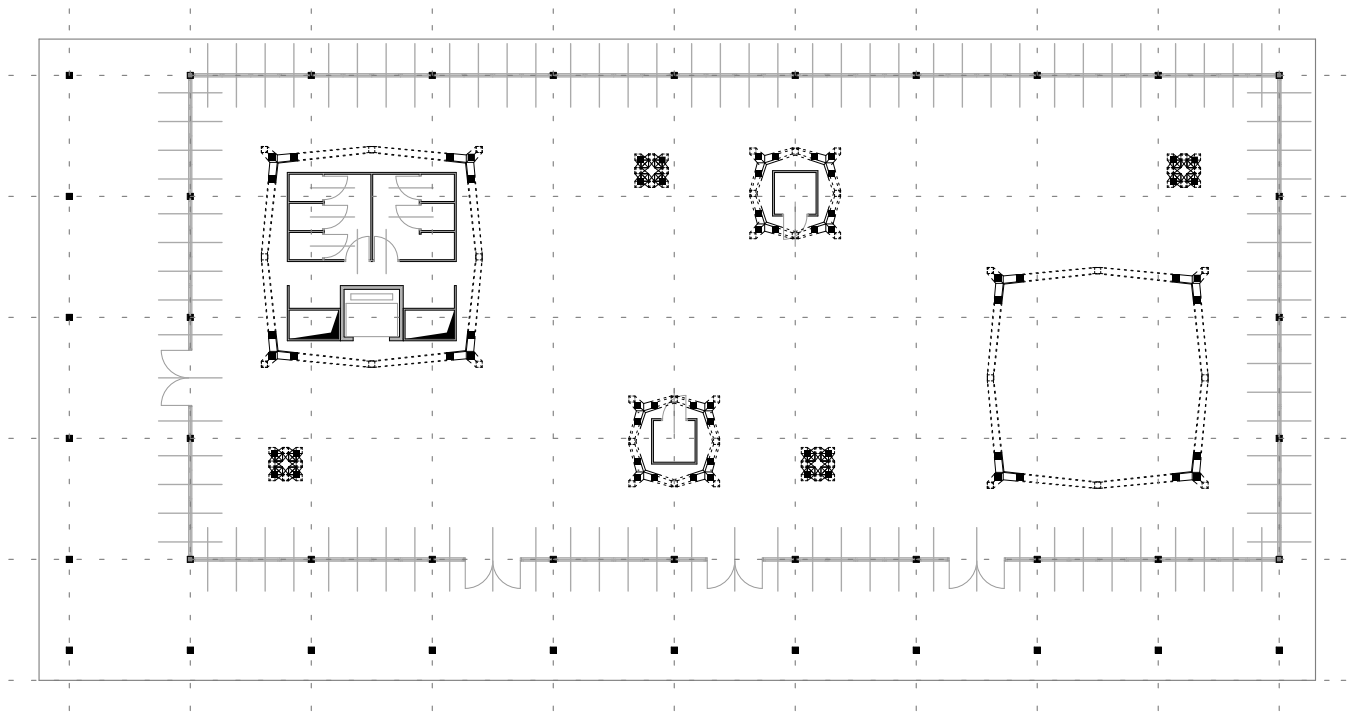
kék végleges mérete
lépcső, gépészet, tartószerkezet



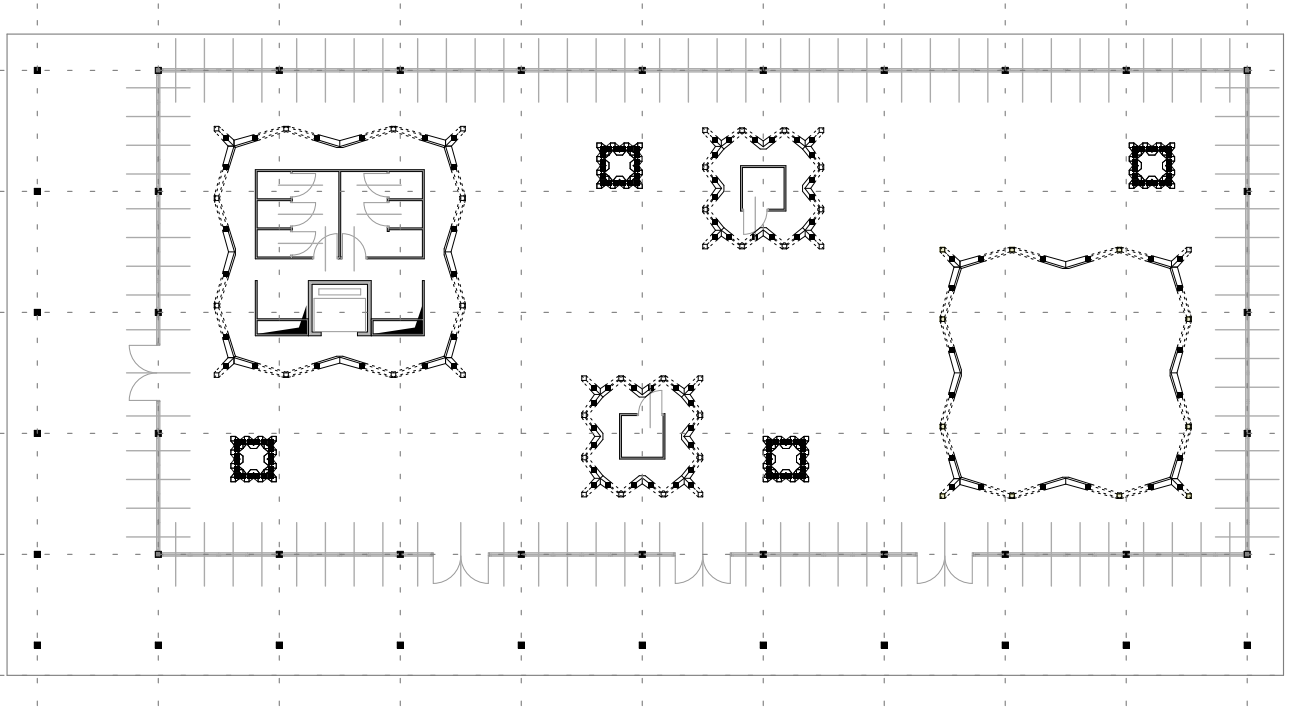
földszint



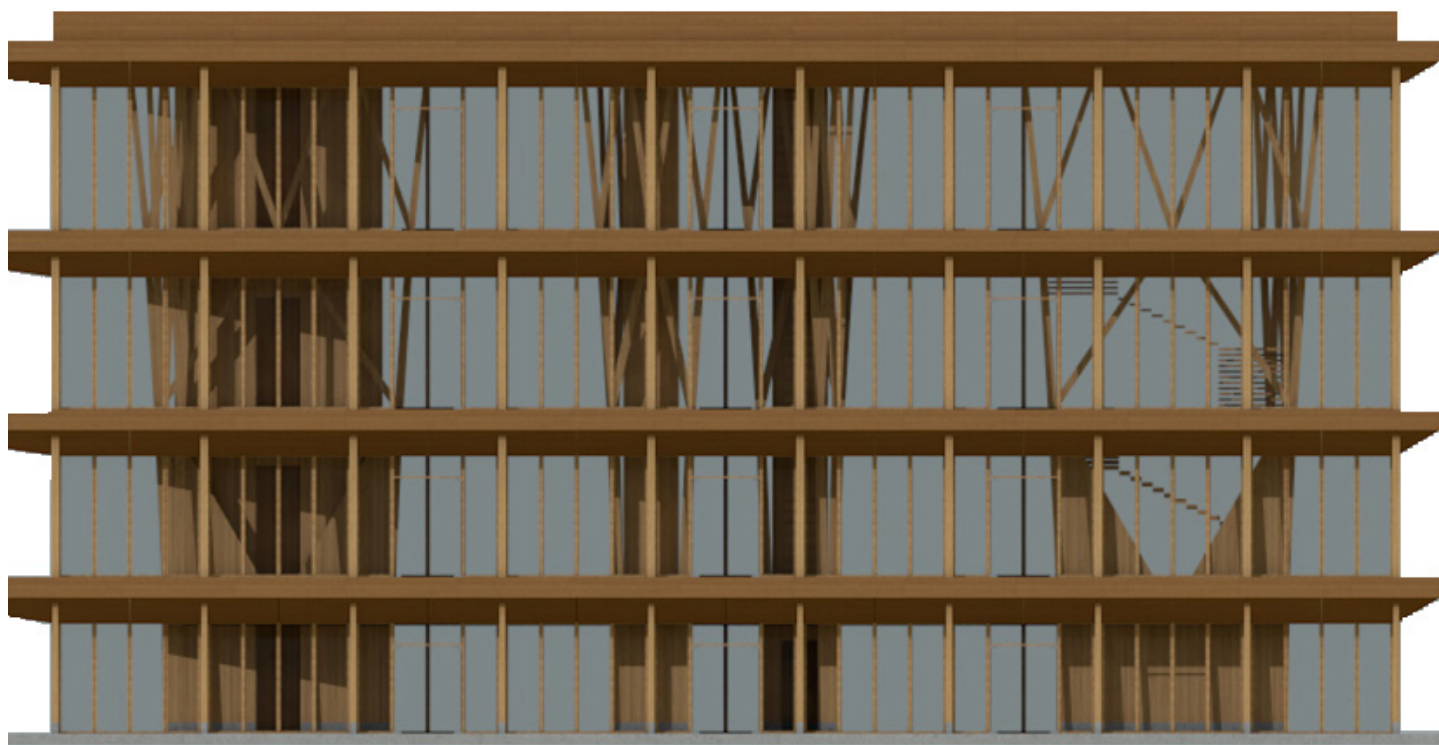
1. emelet



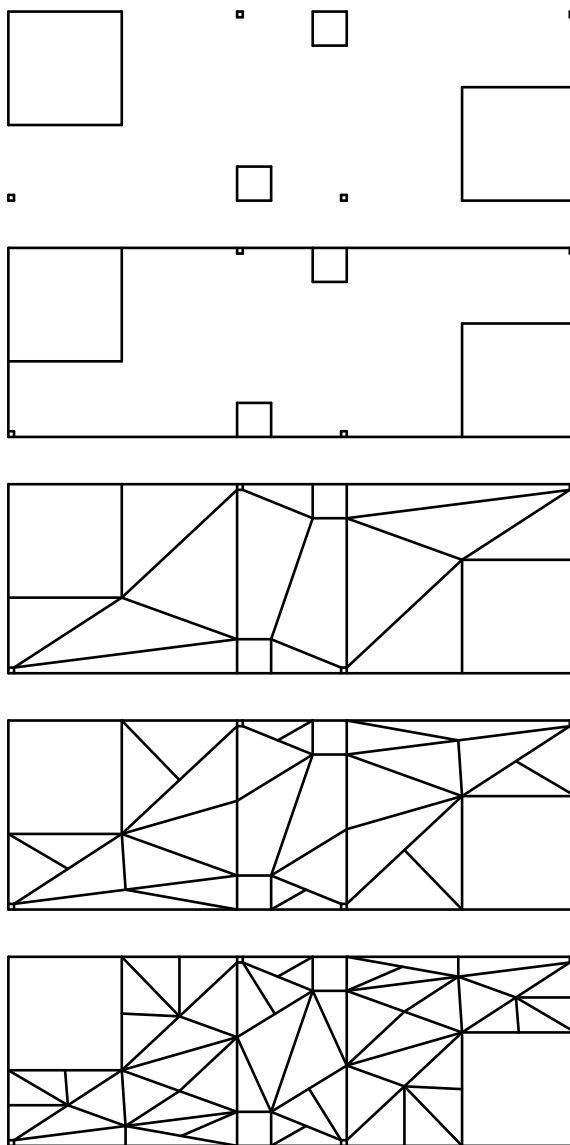
2. emelet



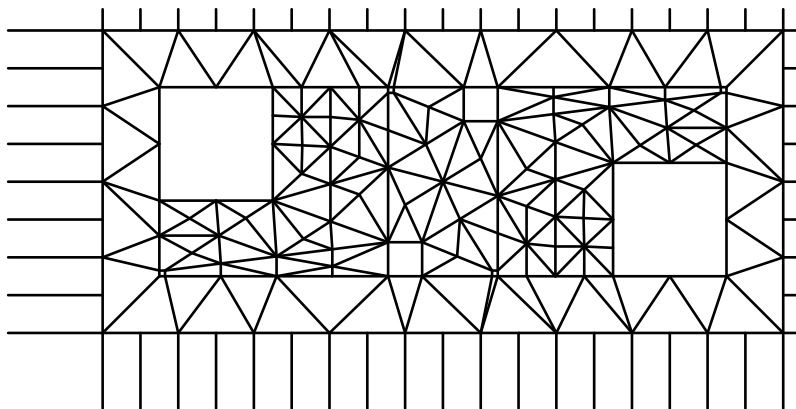
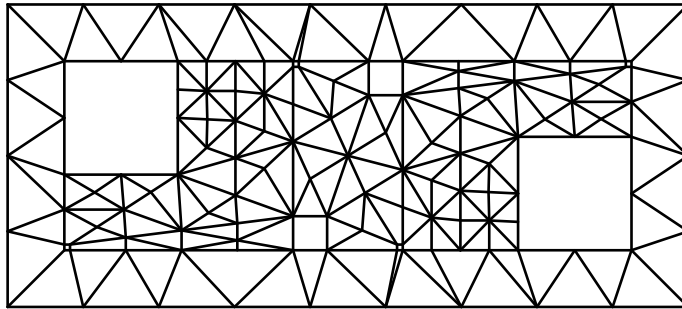
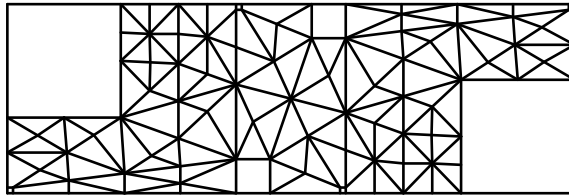
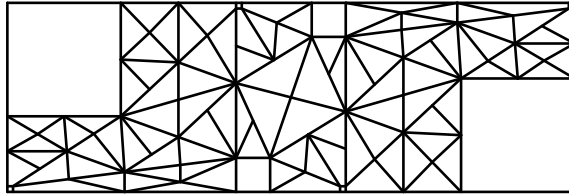
3. emelet



homlokzat



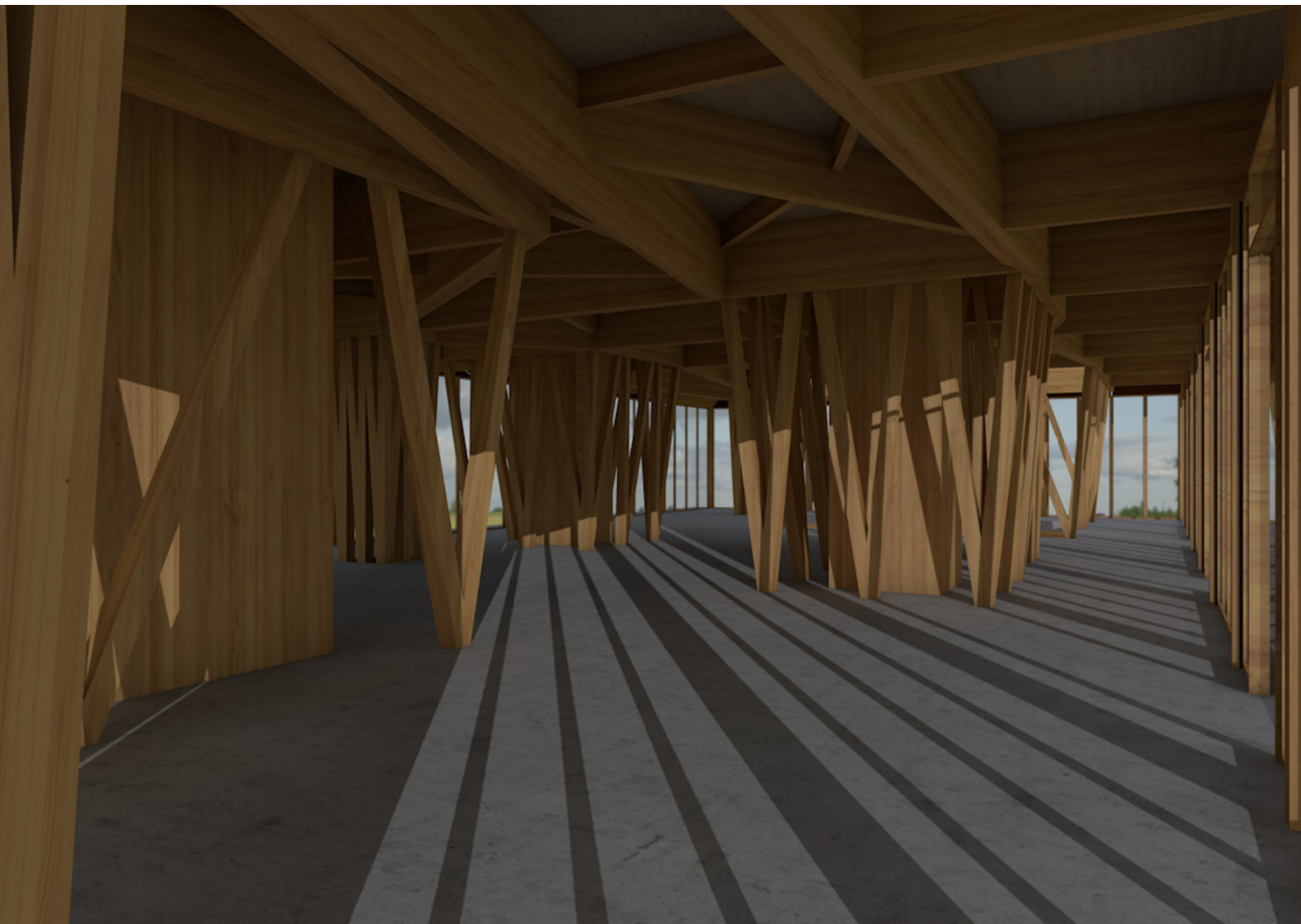
a „fa lombja”
gerendázat, állmenyezet



a „fa lombja”
gerendázat, állmenyezet



a „fa törzsénél”
állmenyezet, világítás, födémáttörés, gépészeti perforáltság



a „lombkoronában”
állmenyezet, világítás, födémáttörés, gépészeti perforáltság